

INFANT, TODDLER, CAREGIVER FRIENDLY NEIGHBOURHOOD 2.0

BEST PRACTICES COMPENDIUM





Ministry of Housing and Urban Affairs
Government of India



Smart City
MISSION TRANSFORMING INDIA

The Ministry of Housing and Urban Affairs is the apex authority of Government of India to formulate policies, coordinate the activities of various Central Ministries, State Governments and other nodal authorities and monitor programmes related to issues of housing and urban affairs in the country. The Smart Cities Mission was launched by the Ministry in 2015 to promote sustainable and inclusive cities that provide core infrastructure and give decent quality of life to its citizens, a clean and sustainable environment and application of 'Smart' Solutions.

<http://mohua.gov.in/>



Van Leer
FOUNDATION

Founded in 1949, the Van Leer Foundation (VLF) is a private foundation focused on developing and sharing knowledge about what works in early childhood development. It provides financial support and expertise to partners in government, civil society and business to help test and scale effective services for young children and families. Urban95 is the Van Leer Foundation's 30 million euro initiative to make lasting change in the landscapes and opportunities that shape the crucial first five years of children's lives. VLF has supported programs in India since 1992.

<https://vanleerfoundation.org/>

BDP.

Founded in 1961, BDP is one of the largest interdisciplinary design led firm in Europe and has won over 750 awards for design quality from international and national bodies. BDP established a studio in India in 2010, and has worked on projects at every scale, from city masterplans to detailed public realm design; from concept through to delivery. BDP brings skills involved in the design of great spaces and environments into a single, managed service. The team in Delhi provides masterplanning, urbanism, architecture and landscape design services with access to the combined expertise of all of BDP professionals worldwide.

<http://www.bdp.com/>



India Resources Trust, an independent charity referred to as "WRI India", provides objective information and practical proposals to foster environmentally sound and socially equitable development. Our work focuses on building sustainable and livable cities and working towards a low carbon economy. Through research, analysis, and recommendations, WRI India puts ideas into action to build transformative solutions to protect the earth, promote livelihoods, and enhance human well-being. We are inspired by World Resources Institute (WRI), a global research organisation.

<https://wri-india.org/>



The Nurturing Neighbourhoods Challenge is hosted by the Smart Cities Mission, Ministry of Housing and Urban Affairs, Government of India, in collaboration with Van Leer Foundation and with the technical support of WRI India. This Challenge aims to incorporate a focus on neighbourhood-level improvements that promote healthy early childhood development (0-5-year-old children) in the planning and management of Indian cities.

<https://smartnet.niua.org/nurturing-neighbourhoods-challenge/web/>

Contents

BEST PRACTICES COMPENDIUM

01 Introduction	8
ITCN Objectives and Best Practices	8
Structure of the document	9
02 Experiences from Nurturing Neighbourhoods Challenge	11
Bengaluru	12
Indore	19
Jabalpur	25
Kakinada	32
Kochi	36
Kohima	44
Rourkela	50
Vadodara	58
Warangal	63
03 Project Case Studies	70
Forest Colony Park in Kohima	76
Anganwadi centres with Play and Amenities	78
Leprosy Pada(Colony) Park	80
Pocket Park at NMT Corridor	82
Play spaces in Anganwadi centres	84
Puttani Park	86
Age-Specific Play Opportunities in Civic Centre Park	88
Gundu Bavi Park	90
Young children-friendly zone at Aranya Nagar	92
Neighbourhood-level public space along Machhi Bazaar Anganwadi centre	94
Child-friendly immunisation centre and courtyard at Naga Hospital	96
Child-friendly Sensory Garden	98
St. Marks Road	100
JM Road	102
Raahgiri Day	104
Child-Friendly Smart Park	106
All Abilities Park	108
Coles Park, Gayatri Devi Park, M.N.K. Rao Park	110
Circling the Avenue	112
6 De Junio Park	114
Tapis Rouge	116
Urban Amenities	118
Parks and Kindergartens	120

04 Programmatic Interventions in Informal Settlements	122
Community Childcare Centres (CCC)	124
Modskool	126
Bareilly compound space for children and women	128
Mother and Child Park	130
Daycare facilities	132
05 Project Briefs, by Objective	134
City-level Sensory Park at 95cm, Rourkela, India	135
Subash Nagar Colony Park, Warangal, India	135
Anganwadi centre at Balasamudram, Warangal, India	136
Toddler play area at Gandhi Nagar Park, Kakinada, India	136
All Ages Park, Saraswati Garden, Jabalpur, India	137
Nehru Park, Fort Kochi, India	137
Rajendra Maidaan, Kochi, India	138
Footpath improvement at Scheme 78 Roads, Indore, India	138
Crèche at MS Building and KPSC Building, Bengaluru, India	139
Improving access to an Anganwadi centre, Agartala, India	139
Improving access to lakefront, Coimbatore, India	140
Reclaiming space for accessing ECD services, Erode, India	140
Exposure to traditional herbs by revitalising abandoned park, Ranchi, India	141
Young children-friendly Anganwadi centre, Udaipur, India	141
Open street for play on Sundays, Rohtak, India	142
Manav Sadhna, Ahmedabad, India	142
Reclaiming pedestrian space on streets, Coimbatore, India	143
Project Chaak, New Delhi, India	143
Matunga Flyover, Mumbai, India	144
Balsena and Tarun Sena Programmes, Bhavnagar, India	144
Palle Prakruti Vanam, Telangana, India	145
Love Your Parks, Mumbai, India	145
Reclaiming street space from private parking at Vikas Marg, Delhi, India	146
BaLA (Building as Learning Aid), Gujarat, India	146
Pedestrian Safety Programme, Sao Paulo, Brazil	147
Solanda Housing Project, Quito, Equador	147
Fortaleza Cares: Prioritising safer access to Albert Sabin Children's Hospital, Fortaleza, Brazil	148
Designing safer streets for children, South Korea	148
Fuji Montessori Kindergarten, Fuji, Japan	149
Cantinho Do Ceu Complex Urbanisation, Sau Paulo, Brazil	149
Bicentennial Children's Park, Santiago, Chile	150

List of Figures

Figure 5.1	Projects implemented in Bengaluru city as part of the Nurturing Neighbourhoods Challenge	12
Figure 5.2	Projects implemented in Indore city as part of the Nurturing Neighbourhoods Challenge	19
Figure 5.3	Projects implemented in Jabalpur city as part of the Nurturing Neighbourhoods Challenge	25
Figure 5.4	Projects implemented in Kakinada city as part of the Nurturing Neighbourhoods Challenge	32
Figure 5.5	Projects implemented in Kochi city as part of the Nurturing Neighbourhoods Challenge	36
Figure 5.6	Projects implemented in Kohima city as part of the Nurturing Neighbourhoods Challenge	44
Figure 5.7	Projects implemented in Rourkela city as part of the Nurturing Neighbourhoods Challenge	50
Figure 5.8	Convergence of National, State, and city- level schemes adopted by Rourkela	51
Figure 5.9	Map showing extent of existing young children-friendly public spaces and facilities with pedestrian shed across city	56
Figure 5.10	Map showing extent of newly added young children-friendly public spaces and facilities with pedestrian shed across city	56
Figure 5.11	Integrating early childhood services data on citizen portal website of Rourkela Municipal Corporation	57
Figure 5.12	Projects implemented in Vadodara city as part of the Nurturing Neighbourhoods Challenge	58
Figure 5.13	Projects implemented in Warangal city as part of the Nurturing Neighbourhoods Challenge	63

Abbreviations

AKTC	Aga Khan Trust for Culture
AMRUT	Atal Mission for Rejuvenation and Urban Transformation
ASHA	Accredited Social Health Activist
ATMS	Automated Traffic Management System
AWC	Anganwadi Centre
AWW	Anganwadi Worker
BaLA	Building as Learning Aid
BBMP	Bruhat Bengaluru Mahanagara Palike
BMC	Brihanmumbai Municipal Corporation
BSCL	Bengaluru Smart City Ltd.
CCC	Community Childcare Centres
CSML	Cochin Smart Mission Ltd.
CSR	Corporate Social Responsibility
DMF	District Mineral Foundation
DULT	Directorate of Urban Land Transport
DWCD	Department of Women and Child Development
ECD	Early Childhood Development
EPDM	Ethylene Propylene Diene Monomer
FGD	Focus Group Discussion
GWMC	Greater Warangal Municipal Corporation
ICDS	Integrated Child Development Services
IIA	Indian Institute of Architects
IMC	Indore Municipal Corporation
ISCDL	Indore Smart City Development Ltd.
ITC	Infant, Toddler, and Caregiver
JMC	Jabalpur Municipal Corporation
JSCL	Jabalpur Smart City Development Ltd
KMC	Kakinada Municipal Corporation
KMC	Kochi Municipal Corporation
KPSC	Karnataka Public Service Commission
KSCCL	Kakinada Smart City Corporation Ltd.
KSCDL	Kohima Smart City Development Ltd.
KSRTC	Karnataka State Road Transport Corporation
MoU	Memorandum of Understanding
MUKTA	Mukhyamantri Karma Tatpara Abhiyan
NACTO	National Association of City Transportation Officials
NGO	Non-Governmental Organisation
NNC	Nurturing Neighbourhoods Challenge
NRC	Nutrition Rehabilitation Centre
PHC	Primary Health Centre
PHO	Public Health Officer
RMC	Rourkela Municipal Corporation
RSCL	Rourkela Smart City Ltd.
RWA	Resident Welfare Association
SDA	Slum Dwellers Association
SHG	Self-Help Group
SIUD	State Institute of Urban Development
SCM	Smart Cities Mission
SUTF	State Urban Transport Fund
UPHC	Urban Primary Health Centre
URDPFI	Urban and Regional Development Plans Formulation and Implementation
UTTIPEC	Unified Traffic and Transportation Infrastructure Planning and Engineering Centre
VMC	Vadodara Municipal Corporation
VSDCL	Vadodara Smart City Development Ltd.

(This page is intentionally left blank.)

Infant, Toddler, and Caregiver-friendly Neighbourhood (ITCN) Objectives and Best Practices

This compendium draws on Indian and international examples of neighbourhood level interventions that meet the five key objectives: safe, green, accessible, playful, and inclusive, for an ITC-friendly neighbourhood. The compendium highlights key design interventions in each example and how they meet the objectives of creating a neighbourhood for ITCs.



The Best Practices Compendium shows examples of ITC-centric measures implemented. It illustrates how a combination of components can create a holistic solution and can be beneficial in overall to infants, toddlers, and their caregivers.

The examples presented in this document were selected according to the following criteria:

1. The examples in the compendium are either from India or regions with similar climatic conditions as India;
2. The projects in the compendium are all applicable to the neighbourhood scale. Large neighbourhood parks, small pocket greens, streetscape interventions and early childhood development facilities, or adapting public spaces with ITC-oriented amenities are all types of open spaces that exist at the neighbourhood level. This illustrates that interventions of different sizes can all contribute to making a child friendly city;
3. Projects implemented on a low budget have been chosen. This shows that limited resources spent judiciously, can also have a huge impact on the quality of the environment. The budget is not the only contributing factor to the success of a project. Other factors, such as addressing different age groups, considering safety, thinking contextually, involving stakeholders and residents, are also important in creating a successful child-friendly project;
4. Projects have been chosen that address all five objectives of this study in one way or another. It is only through considering various aspects and addressing various challenges at the same time, that a holistic approach to improving the child friendliness of cities can be achieved.

Structure of the document

This document is divided into four major sections – Experiences from Nurturing Neighbourhoods Challenge, Project Case Studies, Project Briefs, Programmatic Interventions in the Informal Settlements

Experiences from Nurturing Neighbourhoods Challenge:

As part of the Nurturing Neighbourhoods Challenge, over 180 + projects have been executed over a three-year period, spanning across 25 cohort and 10 deep-dive cities in India. This section showcases the journey of several deep-dive cities from the Challenge, emphasising their significant stories in scaling interventions for young children and their families.

Project Case Studies and Briefs:

This section emphasises on some of the Indian and international good practices which, through a combination of various elements, contribute towards making of a child-friendly city.

Programmatic Interventions in Informal Settlements:

This section details programmatic examples from across the country that cater to ITCs in informal settlements. The information in this section is collated from primary sources by conducting interviews with the implementation agencies and the stakeholders.

(This page is intentionally left blank.)

02

Experiences from Nurturing Neighbourhoods Challenge

No.	City name	City-wide strategy
1	Bengaluru	Transforming ECD facilities into young children-friendly public spaces and developing capacity building framework for agencies across the State of Karnataka
2	Indore	Developing 500+ parks with play opportunities, contributing to the city's blue-green infrastructure
3	Jabalpur	Developing play spaces at diverse scales across the city for all age groups
4	Kakinada	Creating safe, accessible, and inclusive play spaces across the city
5	Kochi	Creating outdoor play spaces in 29 Anganwadi centres (AWCs)*, and enhancing public spaces with young children-centric amenities
6	Kohima	Creating one pocket park each in 19 wards of the city
7	Rourkela	Enhancing quality of life for young children in vulnerable communities, with improvement of public spaces
8	Vadodara	Improving outdoor play spaces in Anganwadi centres across the city
9	Warangal	Developing young children-friendly parks and gardens through convergence with Greening fund

*Anganwadi Centre (AWC) - Early childhood care and learning centre in India

#1 BENGALURU: Transforming ECD facilities into young children-friendly public spaces and developing capacity building framework for agencies across the State of Karnataka

The vision of Bengaluru is to create a safe, accessible, and inclusive environment for infants, toddlers, and caregivers which fosters independence while using public spaces and early childhood development (ECD) facilities.

To achieve this vision, Bengaluru Smart City Ltd. (BSCL) and the Directorate of Urban Land Transport (DULT) are retrofitting the public spaces frequently visited by young families by improving access to early childhood services, such as Anganwadi centres (AWCs) and primary health centres (PHCs), creating pause points along the streets, and reimagining parks and gardens across the city. The city has focused on developing comfortable waiting spaces for visitors, age-specific play spaces, and child-heighted amenities in multiple healthcare facilities and AWCs, following consultations with facility staff and visitors.

Additionally, the city has reclaimed unused spaces along streets to create pocket parks and added age-appropriate play equipment in neighbourhood parks to offer recreational opportunities for young children and their caregivers. Caregiving amenities, such as creches and women lounges, too have been integrated in various public buildings across the city.

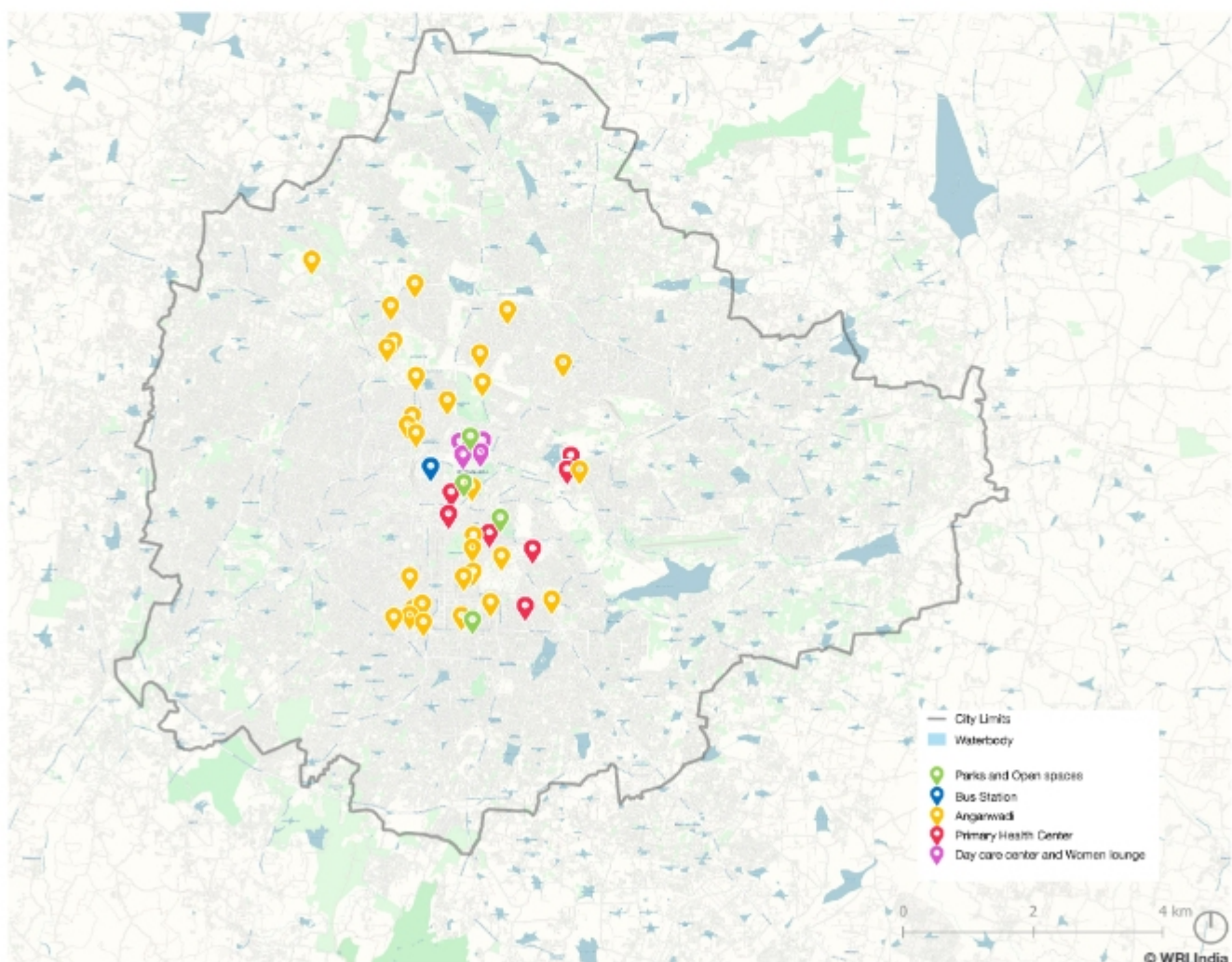


Figure 5.1 Projects implemented in Bengaluru city as part of the Nurturing Neighbourhoods Challenge

Strategies for Scale-up

The city of Bengaluru is actively pursuing and scaling up its vision of developing child-friendly public spaces by implementing the following key strategies :

1. Developing SUTF checklist: DULT administers the State Urban Transport Fund (SUTF), which finances sustainable mobility projects, such as the development of transit terminals and depots, the development of universally accessible streets, and the creation of cycle tracks. To transform all transit facilities into more inclusive spaces that cater to the needs of young children and their caregivers, a design checklist has been created for bus terminals. Any organisation seeking SUTF funding for a bus terminal must now adhere to this checklist, that includes provisions for women's waiting areas, childcare facilities, family toilets, and children's play areas.

2. Organising capacity -building programmes: DULT is supporting the development of a Statewide training programme through the State Institute of Urban Development (SIUD). All levels of staff—decision-makers, mid-level staff, technical staff, and frontline workers—across all development authorities in the State of Karnataka, will be trained on planning, management and development of the city, with a focus on young children and caregiver responsiveness.

3. Ensuring cross-departmental coordination for scale-up: Extensive coordination with BSCL, DULT, Bruhat Bengaluru Mahanagara Palike (BBMP), Department of Women and Child Development (DWCD), the Education Department, the Social Welfare Department, the Office of Backward Communities, and other agencies led to the identification of projects for scale-up. Priority projects were shortlisted after review of over 60 projects, based on site visits, and discussions with stakeholders.



A discussion with DULT on a State-level capacity building module for SIUD



A coordination meeting with relevant government departments for project identification and scale-up strategy

Main case study: Playful and comfortable waiting spaces for young children and families at BBMP Maternity Hospital in Wilson Garden (ECD Facility (health centre), Accessible, Playful)

Project background

The BBMP Maternity Hospital, located in a densely populated residential neighbourhood, typically sees more than 40 visitors daily, with an average waiting time of over an hour. The hospital lacked adequate waiting and seating areas, causing inconvenience for pregnant women, women with babies, and patients with toddlers. To improve the waiting experience, the city introduced dedicated seating, a play area for toddlers, and a herb garden.

Implementing agency and stakeholders involved

The BBMP Maternity Home in Wilson Garden was developed through a collaboration between DULT and BBMP. DULT and BBMP together carried out site selection, caregiver surveys, design, and implementation of the project, and are responsible for its ongoing maintenance. The project was funded through SUTF. The PHC staff contributed by helping understand the unique needs of the visitors and by raising awareness among citizens about the importance of young children and caregiver-focused development.



Process

To understand the challenges faced by the users, DULT conducted multiple on-site observations and intercept surveys with the visitors and maternity home staff. The analysis revealed a lack of seating in front of the Out Patient Department (OPD) and basic amenities, adding to the stress of the caregivers when most people waited 1-2 hours per visit. Based on visitor feedback and on-ground surveys, design interventions were proposed to improve the waiting experience for young children and their caregivers at the facility. DULT was involved in the design development. The proposed solutions included the following:

- **Dedicated waiting area with comfortable seating:** Seating space was provided closer to the OPD area. Seating heights were adjusted to 0.5m and 0.3m, with backrests and wider seating areas to accommodate pregnant women and women with young children.
- **Play area for toddlers:** This space was designed to provide a playful environment for children accompanying patients while they wait.
- **Landscape with herb garden:** Overgrown vegetation and debris were cleared, and air-purifying medicinal and flowering plants were added.

- **Caregiver amenities:** Nursing rooms were added near the waiting and OPD area.
- **Dedicated walkway leading to the toilets:** Toilets that had been inaccessible were made safer with paved pathways.

Issues faced on ground	Strategies adopted
The hospital lacked adequate seating for people waiting outside the OPD, forcing many to sit on curbs, and it also lacked accessible pathways around the premises.	Adequate, comfortable and dedicated seating was provided in front of the OPD for children and caregivers.
Open dumping and overgrown weeds around walkways were observed.	Debris was cleared, and walkways leading to the toilets and seating spaces were paved.
An engaging environment for children was lacking.	A play pocket was added to engage children while they waited.
Families had a poor perception of safety and waiting experience.	A clean and safe space improved the perception of safety and waiting experience of caregivers.

Impact

Enhancing the BBMP Maternity Home's waiting areas with dedicated seating and a toddlers' play area has significantly impacted visitor experience. By relocating the waiting area closer to the building entrance, its management during busy OPD hours has become more efficient. In-patient pregnant women take walks in the evening on the newly constructed pathway, as it is now a safe and pleasant walking area, enabling them to spend time outdoors amidst nature and reduce stress. Additionally, there was a notable 93% increase in caregivers reporting enhanced satisfaction, citing improved feelings of safety and comfort. Post intervention, young children and their caregivers were observed utilising the premises during non-operational hours, with the maternity home being regarded as a community public space within the neighbourhood. This project was awarded the first prize in the Kayakalp Rating for PHCs in Bengaluru south zone. The success of the project generated high demand from caregivers to improve other healthcare facilities on similar lines. Doctors from other hospitals have visited BBMP Maternity Home to observe the changes and have requested similar improvements in their hospitals.

"During my sister's first pregnancy, we had to endure long waiting periods with inadequate seating. We often ended up sitting on the curb or going to nearby shops or hotels to wait. However, during her second pregnancy, several improvements had been made. This made a significant difference. We were able to wait comfortably within the hospital premises at designated seating areas where my sister could sit with her feet up. It was such a relief."

- Ms. Keerthana, Attendant of a visiting patient

"Caregivers are now seen engaging with their children while their patients go for check-up. They now feel comfortable during the waiting time. Children from neighbouring areas also use our play areas. Our hospital has won the first prize in south zone clinical BBMP as well as in Kayakalp."

- Ms. Kaveri, Medical Officer at Wilson Garden BBMP Maternity Home

Finance

The project was implemented through funds leveraged from the State government's SUTF.

Sustainability and Scalability

- Due to the increased use of the newly created waiting spaces within the hospital premises by several families, these areas are well maintained.
- The young children and caregiver-friendly enhancements that improved the Kayakalp rating of the maternity home inspired the city to create a replicable model, which is now being implemented in other healthcare facilities.
- The city has targeted other hospitals, such as H Siddaiah Referral Hospital and BBMP Dassapa Hospital, for replicating the interventions.

ADDITIONAL INTERVENTIONS IN THE CITY – PROJECT BRIEFS

2. Pause point for pedestrians along junction, Hudson Circle (Streets, Accessible)

The existing site was an inaccessible residual space along one of the busiest junctions in the city, with high pedestrian footfall. It is located near the entrance of a city-level park and a bus stop. The city transformed the space to create a public plaza with shaded clusters of seating, a cycle stand, and lighting. This has provided a safe pause point and waiting space for pedestrians with an increase in footfall. The secure space allows children to move freely, and the clustered seating has encouraged social interaction while giving caregivers an easy way to watch their children.



3. Anganwadi centres with age-specific amenities (ECD Facility (anganwadi centre), Accessible)

The city revamped primary school premises and 30 AWCs with play and basic amenities, such as child-height wash basins, drinking water points, ramps with safe railing, and play areas. Such age-specific improvements has encouraged young children to use the premises independently and spend more time in outdoor play. Adapting these AWC premises to the special needs of young children has also resulted in increased enrolment.



4. Door-step play in dense housing, Putaani Park in Shantinagar (Parks and Open Spaces, Playful)

The dense government housing colony in Shantinagar lacked formal open spaces for children, forcing them to play on unsafe streets. Recognising this need, a tactical intervention was made to create a play area in a residual space between buildings, attracting many children and caregivers. Based on feedback and learnings from the tactical trial, a dedicated space was allotted by the Karnataka State Road Transport Corporation (KSRTC) to develop a permanent pocket park with interactive elements, offering diverse play opportunities for young children. This development has allowed caregivers to spend more time outdoors with their children, fostering a sense of safety and community belonging.



5. Waiting and Children's Play Area at BBMP Dassapa and H Siddaiah Referral Hospitals (ECD Facility (health centre), Accessible)

Following the success of the BBMP Maternity Home in Shanti Nagar, medical officers from various facilities, including Siddhaiah Hospital, sought similar enhancements from DULT and BSCL. These maternity homes experience high footfall from pregnant women and mothers with young children, often accompanied by their families. Patients face long waiting times, up to 2-3 hours on immunisation days, with inadequate waiting areas and activities for children adding stress, often forcing them to sit uncomfortably outside. During surveys, pregnant women visiting the facilities expressed a need for airy and comfortable waiting spaces. The city reclaimed vacant spaces in hospital premises, in consultation with multiple stakeholders, to add multi-height seating, play pockets, and nursing rooms, thus creating more comfortable and engaging facilities for young children and caregivers, and transforming the stressful environment of hospitals into vibrant community spaces.



WAY FORWARD

- Bengaluru is planning to develop more young children and caregiver-centric public spaces across the city.
- Karnataka is planning to roll out a State-wide capacity building programme for the Urban Development Department towards young children-friendly urban development through SIUD.
- DULT is advancing policy-level efforts by making amendments in the guidelines for young children and caregiver-friendly transit stations in the SUTF funding checklist.
- The city is convening and strengthening relations with all stakeholders to build an ecosystem in the city to advocate a children-friendly approach.

#2 INDORE: Developing 500+ parks with play opportunities, contributing to the city's blue-green infrastructure

Indore is experiencing rapid urbanisation, with about 29.6% of its residents living in vulnerable settlements and 12% of its population being young children aged 0-6 (Census of India 2011). In response to the challenges brought about by urban expansion and the associated climate change, city agencies are strategising the development of climate-resilient and family-friendly public spaces.

Learnings from pilot projects have helped the city shape its vision to develop more than 500 parks and gardens throughout the city and create a comprehensive green-blue network of public spaces. These include urban forests such as 'Ahilya Van', all-ability parks such as 'Umang Vatika' and other neighbourhood parks and gardens.

The city is systematically developing child-friendly spaces at various scales, ranging from parks, gardens, streets, AWCs, and pre-primary schools, to pocket spaces within neighbourhoods. Strategies include the adoption of public space design guidelines, organising community engagements, and capacity -building sessions for both government and non-government stakeholders.

In addition, the city has set up a carpentry workshop to create age-appropriate play elements and street furniture using natural materials.

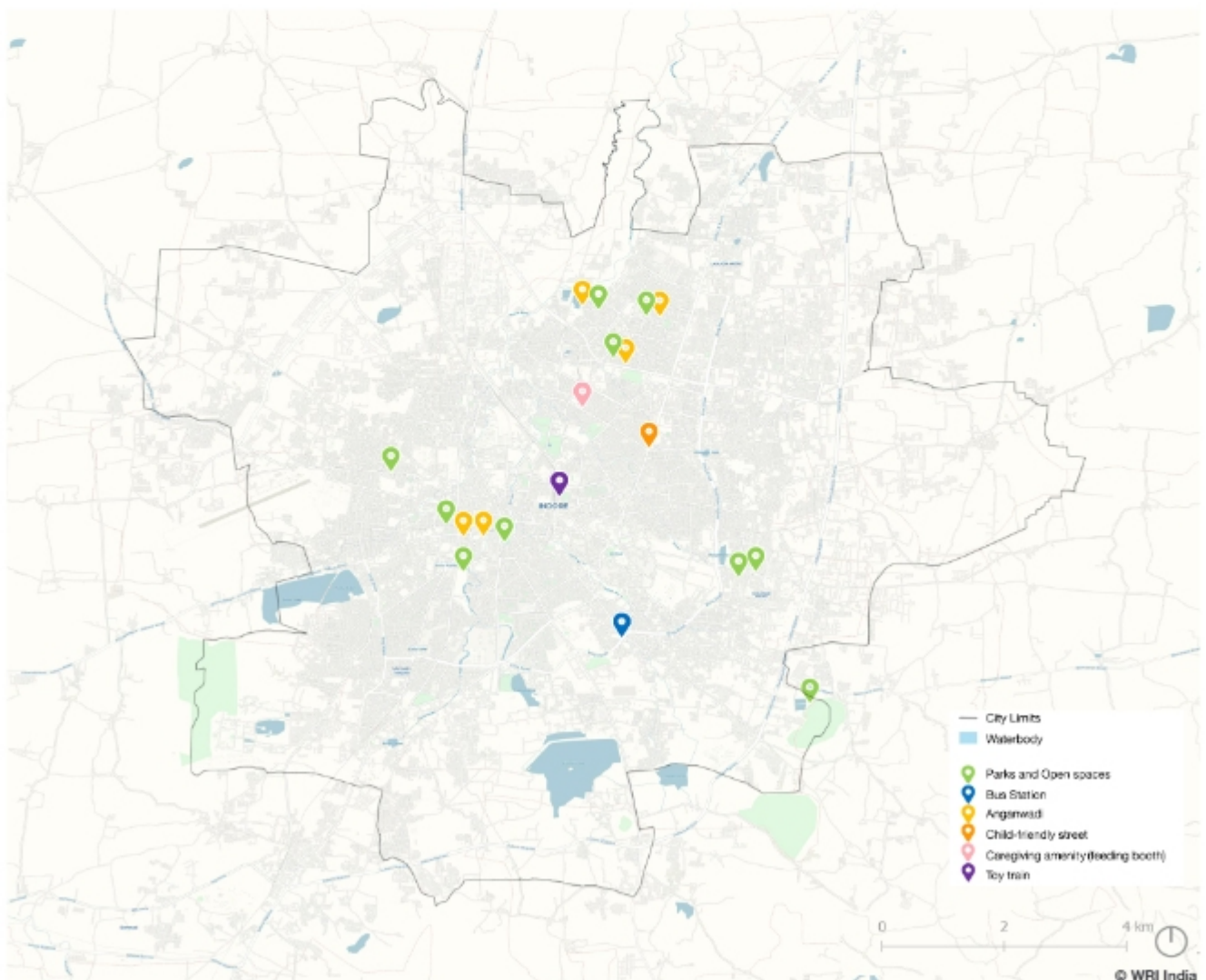


Figure 5.2 Projects implemented in Indore city as part of the Nurturing Neighbourhoods Challenge

Strategies for Scale-up

To achieve climate resilience and develop young family-friendly neighbourhoods, the city has adopted the following strategies:

- 1. Setting up of NN Cell:** Indore has set up a multidisciplinary Nurturing Neighbourhoods Cell (NN Cell) headed by the Chief Executive Officer, Indore Smart City Development Ltd. (ISCDL). The members of this cell include Additional Municipal Commissioners, Indore Municipal Corporation (IMC), Superintendent Engineer, City Engineer, Assistant Engineer, Assistant Planner, and the Garden Department (IMC). The cell facilitates the scale-up of young children and caregiver-centric projects, provides expertise to implement projects, monitors the implementation, and ensures partnership and coordination with diverse stakeholders.
- 2. Scaling more than 500 Parks and Open Spaces:** Indore is enhancing the blue-green network of the city by scaling a network of more than 500 green open spaces through programmes such as Ahilya Van, Umang Vatika, and various neighbourhood parks and gardens. They are also enhancing climate resilience by converting flood-prone areas into playful public spaces. This is achieved through the adoption of a public space design toolkit that restricts hardscape and built areas to 30% of the park area, along with organising regular community-driven plantation initiatives.
- 3. Setting up carpentry workshop:** The city has partnered with the Forest Department to establish a carpentry workshop to address the challenge of acquiring a sustained supply of affordable and age-appropriate play equipment made of natural material for park projects. The workshop repurposes the city's scrap wood to craft age-appropriate play equipment and street furniture for public spaces. So far, the workshop has produced more than 400 seating and 30 play elements that have been installed in various public spaces across the city. This marks a conscious effort of the city to transition from using metal and prefabricated play elements and seating to incorporating natural materials as alternatives. The city has also allocated dedicated funding for the carpentry workshop in the municipal budget.
- 4. Organising capacity -building workshops:** The city is conducting regular capacity -building workshops and engagement activities to build the technical know-how of government stakeholders (across various levels) and non-government stakeholders.
- 5. Integrating a child-friendly lens in all projects:** The city is now incorporating a child-friendly perspective into many of its projects, such as creating child-friendly polling booths. To enhance the voting experience for visitors, the city agency provided shaded waiting areas, play spaces for young children and their caregivers, drinking water facilities, and a nursing booth.



Indore is incorporating play elements made of natural material, which have been developed in the carpentry workshop in various public spaces across the city

Main case study: Transforming a flood-prone area in Sanskriti Nagar into a family-friendly space

(ECD Facility (anganwadi centre), Accessible, Playful, Green)

Project background

Sanskriti Nagar, located at the periphery of the city, is in one of the city's low-lying areas. An underutilised open space in the middle of this neighbourhood faced regular waterlogging that would last 8-10 days during the monsoons. Poor lighting and instances of antisocial activities had rendered the space unsafe for women and children, especially during evening hours and the monsoons. Neighbourhood-level surveys also revealed that the children needed to travel at least 30 minutes to access the nearest AWC. To address these challenges, the city agency revitalised the open space through a nature-based approach and transformed it into a child-friendly public space with an AWC.

Implementing agency and stakeholders involved

The project was a collaborative effort between ISCDL, IMC, and DWCD, with support from the community. While IMC secured funds and provided necessary approvals for the project, ISCDL handled tasks such as site selection, stakeholder consultation, fund management, departmental coordination, and building a network of community champions. DWCD was instrumental in relocating the AWC to Sanskriti Nagar park, gathering feedback from caregivers and Anganwadi Workers (AWWs), and actively collaborating with the community to transform the space into a family-friendly environment. The involvement of key government officials, including the CEO of ISCDL, significantly aided in mobilising the local community. The community itself played a crucial role in activating, monitoring, and maintaining the space both during and after the implementation process.



Process

City agencies identified more than 500 Parks and Open Spaces to improve the city's blue-green network, considering various parameters such as air quality, noise levels, vegetation, and surface temperatures. Officials identified Sanskriti Nagar, a low-lying area prone to waterlogging during the monsoons as a priority site, based on city-wide mapping and analysis. Further site-level analysis revealed significant issues, including safety concerns, a lack of play opportunities for young children, and waterlogging. To address these challenges, the agency developed a strategy to revitalise the space and enhance learning opportunities by relocating the AWC from a neighbouring area to Sanskriti Nagar. Government agencies and the community jointly organised regular

engagement activities to better understand the issues, raise awareness, empower the community to maintain the space, and foster a sense of belonging.

To prevent frequent flooding, several measures were implemented, including enhancing soil percolation by replenishing topsoil, improving stormwater and drainage networks by redirecting site slopes, and establishing new drainage connections, and planting more than 50 trees across the park to preserve soil and enhance water absorption. Various age-appropriate play equipment made from natural materials procured from the city's carpentry workshop were installed for young children.

Additionally, the temple within the premises was renovated so that social activities could be organised. Despite the city agency's efforts, there were concerns regarding anti-social elements near the AWC premises. In response, city agencies proactively engaged with residents to activate the space. Visits by key government officials, including the CEO of ISCDL, greatly enhanced the perception of the space. Caregivers, especially fathers of young children, played a crucial role in ensuring safety. This holistic approach has effectively turned the area into a thriving community public space.

"We can now bring children outside to play without any safety concerns, and there has been a decrease in anti-social activities following this development."

- Ms. Seema Yadav, Anganwadi Worker, Sanskriti Nagar



Issues faced on ground	Strategies adopted
<p>The site experienced frequent waterlogging.</p>	<p>The city agency improved soil percolation by replenishing topsoil, enhanced stormwater and drainage networks by maintaining slopes, and established new connections to the stormwater network. They also planted trees across the park to prevent soil erosion and improve water absorption.</p>
<p>The site experienced the presence of anti-social elements, especially around the AWC.</p>	<ul style="list-style-type: none"> • Key government officials visited the site and interacted with the community to improve the perception of this space. • The city agency identified local champions for monitoring the space. • They activated the space by organising bi-weekly family-oriented events. • AWWs regularly engaged students in outdoor activities. • The city agency created a permeable compound wall around the premises to enhance safety and visibility.
<p>The site had inadequate lighting.</p>	<p>A high mast light was installed to provide adequate lighting.</p>
<p>The site was used as a dump yard.</p>	<p>AWWs helped raise awareness among the community about littering. IMC frontline workers installed dustbins and increased the frequency of maintenance visits.</p>

Impact

The intervention has significantly benefited young children and their families of Sanskriti Nagar and nearby areas. Previously, it took 8-10 days for water to absorb in and around the site, even with average rainfall. Now, it absorbs within hours even during heavy rains. Raised pathways installed as part of the project have improved access within the premises, including play areas and the AWC even during the peak monsoon season.

Post-assessment surveys show an increase in young children and caregivers in the neighbourhood accessing the play space and spending more than an hour playing outdoors daily, marking a substantial increase in the time spent outdoors. The space remains active through regular public events, plantation drives, and storytelling sessions. Currently, the Sanskriti Nagar park experiences high footfall and the AWC experiences higher enrollment and full attendance, and is able to provide a safe, green, and playful environment for all.

"The open space used to get flooded every year. It has been one year now since the park was developed. This year, it did not flood. Water percolated within a few hours of a very heavy rainfall. Ever since the pathways were constructed and play elements installed at varied heights, all the families are able to use the park throughout the year safely"

- Father of two toddlers, resident of Sanskriti Nagar

Finance

The development of the park was funded by IMC. The DWCD provided financial support to refurbish the AWC.

Sustainability and Scalability

- Space maintenance is a shared responsibility of the city agencies, frontline workers, and the community.
- The play elements made of natural material, which were tried and tested here, are now being replicated at other locations through the carpentry workshop.

ADDITIONAL INTERVENTIONS IN THE CITY – PROJECT BRIEFS

2. Development of Pocket Park in Prem Nagar Slum (Parks and Open Spaces, Inclusive, Playful)

This vulnerable neighbourhood, home to a community of bamboo artists, lacked accessible green open spaces, forcing residents, including children, to walk as long as 30 minutes to the nearest park. Consequently, children spent limited time outdoors or played on the streets. A community space for social interaction too was lacking.

To address these issues, an unused area within the settlement was identified and transformed into a green, playful community space. This involved persuading the community to repurpose their dumping and storage area to create a play space for children. The interventions included cleaning the area, leveling the ground, creating gentle green mounds, planting trees and medicinal plants, adding play elements and multi-height seating using tyres and recycled wood, installing lights for safety, and building a bamboo compound wall with the involvement of local bamboo artists. With a public space right at their doorstep, the pocket park now sees an increased footfall of children and caregivers from the community, with a notable rise in the average daily time they spend there. The project also enabled the community to reconsider their surroundings and explore alternative uses of the space for their children and various age groups.



WAY FORWARD

- Using a data-driven approach, the city is developing a network of green open spaces, including city-level parks, neighbourhood parks, pocket parks, and urban forests.
- Indore is scaling age-appropriate and nature-based elements in all public spaces through the carpentry workshop.
- ISCDL has proposed recommendations to the Indore Development Authority (IDA) as annexures in the Indore Master Plan, suggesting the incorporation of a young children-centric perspective in the design of public spaces.
- The city is developing a network of local champions to advocate young children-friendly and greening practices through regular capacity -building.

#3 JABALPUR: Developing play spaces at diverse scales across the city for all age groups

Jabalpur, a city with a population of 1.06 million, including 0.11 million young children (Census of India 2011), is grappling with a significant shortage of public spaces, offering less than 1 sq. m. per capita. This falls short of both Indian and international benchmarks.

To tackle this issue, Jabalpur is creating inclusive, child-friendly public spaces, with a focus on play to improve these areas. The city agencies are partnering with local communities to identify and transform diverse scales of public spaces into engaging play areas for children. These include setting up play zones in healthcare facilities, reclaiming public spaces in vulnerable neighbourhoods, and upgrading existing parks with toddler-friendly features. The city has also designed a standard play module made of wood and implemented it across several projects.

Furthermore, Jabalpur is creating a comprehensive Play Master Plan to systematically guide the future development of child-friendly spaces throughout the city.

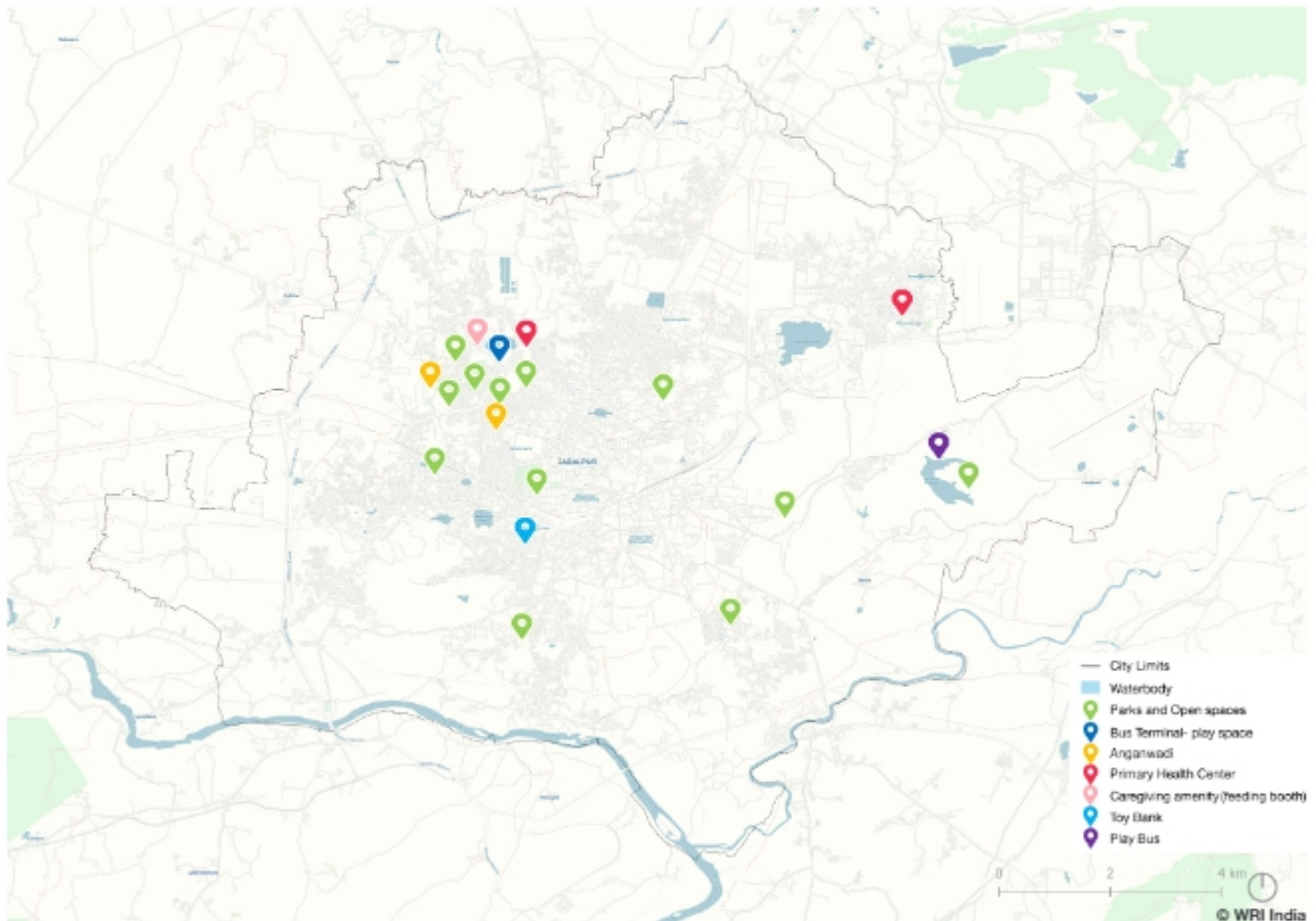


Figure 5.3 Projects implemented in Jabalpur city as part of the Nurturing Neighbourhoods Challenge

Strategies for Scale-up

Jabalpur's efforts in adopting a child-friendly approach in both ongoing and upcoming projects include the following:

1. Jabalpur Khel Plan: Jabalpur aims to implement the Khel Plan, a comprehensive strategy to expand and enhance play opportunities across the city through systematic data-centric planning. This initiative aligns with the vision of transforming Jabalpur into a playful city for all, focusing especially on the well-being of young children from the vulnerable settlements, along with building a local network of play advocates for long-term sustainability. Through the Khel Plan, Jabalpur intends to develop safe, inclusive play opportunities within a 500m radius of every neighbourhood by 2035.

2. Creating templates for retrofitting parks with age-appropriate elements: The city is experimenting with natural materials to create play structures to break away from the usage of conventional play equipment. In neighbourhood and pocket parks, wooden play equipment such as balancing beams, climbing frames, and bridges have been added, offering new play experiences for young children in public spaces.

3. Introducing natural and unstructured play opportunities in vulnerable settlements: The city has successfully developed play areas using natural materials and aims to continue reimagining vulnerable neighbourhoods to enhance access to unstructured and natural play.



Main case study: Developing children-friendly vaccination centre at Manmohan Nagar PHC (ECD Facility (health centre), Accessible, Playful)

Project background

Jabalpur Smart City Ltd. (JSCL) initially pioneered the concept of a child-friendly vaccination centre in response to the COVID-19 pandemic. They transformed an existing building within a PHC premise into a dedicated children's vaccination centre, and converted the parking area of around 260 sq. m. into a child-friendly waiting and play area.

Implementing agency and stakeholders involved

In September 2021, JSCL partnered with the Jabalpur Municipal Corporation (JMC) to execute this project. Together, JSCL and JMC were responsible for site selection, conducting surveys, developing the design, and implementing the project. They secured funds through innovative approaches, provided additional manpower for implementation, and handled maintenance. The staff at the PHC supported these efforts by raising awareness among citizens about the importance of young children-centric development and initiating crowdfunding.



Process

The city agency conducted multiple focus group discussions (FGDs) and workshops, involving PHC staff and citizens at all stages. To provide an enjoyable experience for young children visiting the PHC for vaccination, JSCL converted an existing building into a dedicated children's vaccination centre. The surrounding vacant land which was initially encroached by parking (approximately 260 sq. m.), was transformed into a child-friendly space by:

- Creating playful waiting spaces: The parking space was reclaimed to add multi-height seating for both children and caregivers, with natural shading.
- Creating a play area: Adjacent to the waiting area, a play space with nature-based elements, such as a sandpit and grass mound, and other play equipment was developed. Vibrant colors were used to paint the building walls, creating a friendly environment for children.
- Adding caregiver-centric amenities: A diaper vending machine and changing station were installed, along with a sanitary napkin vending machine for caregivers

Thus, these interventions were aimed not only to improve the facility's infrastructure but also to enhance the vaccination process for young children and their caregivers.

Issues faced on ground	Strategies adopted
The building was initially used for storage purposes and also functioned as staff quarters, making it difficult to persuade the medical staff to vacate the premises.	JSCL conducted regular awareness programmes to sensitise the staff about the importance of providing child-friendly spaces within the PHC.
Lack of availability of space to develop waiting areas for the visitors.	JSCL reclaimed a part of the existing parking area to develop an outdoor waiting area after receiving approvals from the Public Health Officer (PHO) and the PHC administration.
The public was unaware of the newly improved vaccination centre at this PHC due to presence of another established PHC nearby.	JSCL launched campaigns to spread the word about the newly enhanced child-friendly vaccination centre.

Impact

The city agency recognised the role of play as a tool to make the PHC environment less stressful for young children.

"Previously, visiting the vaccination centre was a stressful experience as children often felt fearful and cranky. However, the introduction of a play area through these new interventions has transformed the environment into a less stressful and more engaging space for children. Consequently, the vaccination process has become quicker."

- Ms. Sadhvi Verma, Mother of a three-year-old toddler

Finance

The project was funded by the Smart Cities Mission (SCM) as well as crowd-sourcing initiatives. The cost of the project was estimated to be INR 3 lakh.

Sustainability and Scalability

- The Health Department is responsible for covering the operation and maintenance costs.
- This pilot also encouraged the city to create similar playful public spaces in other health facilities such as the Nutrition Rehabilitation Centre (NRC).

ADDITIONAL INTERVENTIONS IN THE CITY – PROJECT BRIEFS

2. Community-led transformation of Vikasnagar park to provide play opportunities (Parks and Open Spaces, Inclusive)

This neighbourhood park had been abandoned and was in a state of neglect, offering limited play opportunities for local children. Approximately 400 community members came together to revitalise this 1-acre park, creating age-appropriate play areas, sensory trails, shrub plantation, and shaded seating. To ensure its sustainability, the city signed an MoU with the Resident Welfare Association (RWA) to foster a sense of ownership among local residents for the operation and maintenance of the park. Civic engagement has been a key strategy to foster a sense of ownership among citizens, thereby ensuring the maintenance of the project.



3. Creating play space at Nutrition Rehabilitation Centre, Ranjhi (ECD Facility (health centre), Playful)

The NRC, which sees a high footfall of young children and caregivers, previously lacked space for play and recreation. The city retrofitted the building rooftop, creating a shaded 250 sq. m. play area for young children. A vending machine for diapers and sanitary napkins was installed for hygiene and convenience of caregivers. Additionally, a dedicated nursing room was established to support nursing mothers. The nutrition specialist at the NRC has reported that the new play area has greatly aided the physical recovery and mental well-being of the children. Play therapy in this child-friendly setting provides comfort and security, reducing their fear of the hospital. Mothers also feel more at ease, seeing the facility as less of a hospital environment.



4. Creating outdoor play opportunities in the vulnerable settlement of Brijmohan Nagar (Parks and Open Spaces, Inclusive)

Situated in the low income neighbourhood of Brijmohan Nagar, this park, once a vacant plot, now provides recreational opportunities for approximately 380 families. The city agency collaborated with the community to develop solutions that cater to the recreational needs of all age groups within this park. It features specific play areas for young children and their caregivers, along with a gathering space for the community. The park offers diverse play options, incorporating both conventional and wooden play equipment for children. Residents have noted a positive shift: children in the area are now more involved in various play activities, reducing their dependence on mobile phones and unsafe street play. Instances of antisocial activities have decreased, and the elderly are now spotted utilising the space for evening walks.



5. Nature-based play area at Dumna Nature Reserve (Parks and Open Spaces, Playful)

Dumna Nature Reserve is a popular urban green space and forest area frequented by both tourists and residents. The Garden Department initiated this project to foster a connection between young children and nature by creating a dedicated play area within the reserve. Given its status as a nature reserve, the play equipment was designed using natural materials. The play area includes wooden structures such as a balancing beam and bridge, as well as a play bus with slides and indoor games, providing a variety of recreational options for young visitors. Additionally, there are multi-height seating facilities.

Since the implementation of this project, there has been a notable increase in the number of families, particularly with young children, visiting the Reserve on weekends. This, in turn, has increased young children's exposure to nature. This initiative has also prompted parents to reminisce about their own childhood experiences with nature and engage in similar traditional games with their children.



Way Forward

- Inspired by Istanbul, Jabalpur is in the process of developing a Play Master Plan, guiding the local agencies towards a comprehensive approach to scale up its network of inclusive public spaces.
- The city is creating opportunities for age-appropriate play in different scales of public spaces.
- Jabalpur is upgrading neighbourhood parks with age-appropriate play features by using templates made of natural materials, facilitating scalable interventions.

#4 KAKINADA: Creating safe, accessible and inclusive play spaces across the city

Story of Ramarao Peta neighbourhood:

Located in the heart of Kakinada city, Ramarao Peta is predominantly a residential neighbourhood that also houses hospitals, public gardens and other facilities frequented by young children and their caregivers. The neighbourhood offered Kakinada Smart City Corporation Ltd. (KSCCL) an opportunity to implement prominent interventions that benefit target users and build community support for infants, toddlers, and caregiver-friendly initiatives.

With the neighbourhood spanning two wards that have a higher number of informal settlements, KSCCL identified opportunities to increase access to play spaces for the most vulnerable young children. This included redeveloping a prominent street in the neighbourhood, transforming an abandoned residual space alongside existing facilities into a play area, and upgrading a city-level park to invite greater use by infants, toddlers, and caregivers.

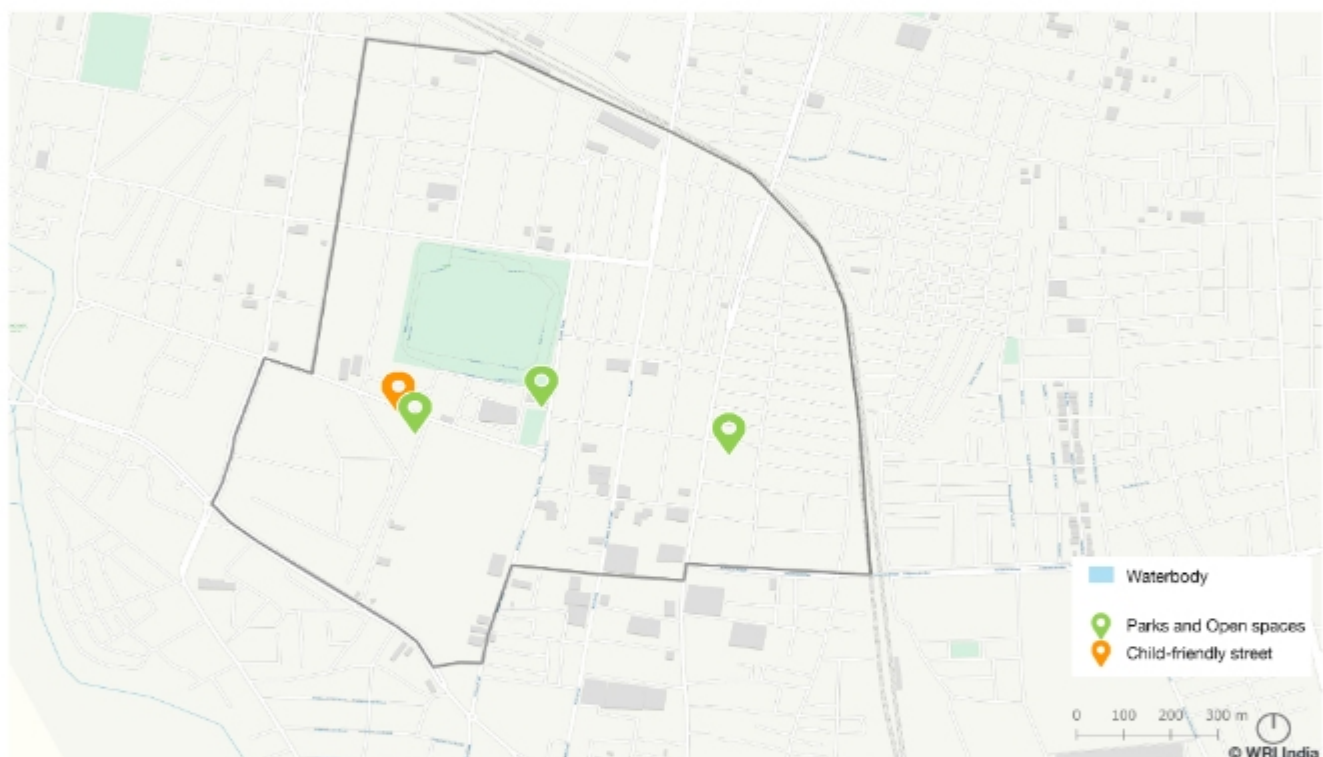


Figure 5.4 Projects implemented in Kakinada city as part of the Nurturing Neighbourhoods Challenge

MAIN CASE STUDY: Creation of Toddler Zone and Pedestrian Plaza at Eat Street (Streets, Accessible, Safe, Playful)

Project background

Eat Street is one of the prestigious projects taken up by KSCCL under Smart Cities Mission. It sought to create a public space in the heart of the city, with a chain of eateries and recreational spaces along the street. The street connects major schools and colleges in the city and sees a high footfall of young families due to numerous ECD facilities in the vicinity. However, beyond working hours, the area was underutilised and perceived as unsafe. The street lacked pedestrian infrastructure and seating and was primarily characterised by haphazard street vending, 2-wheeler and 4-wheeler parking, and the presence of cattle and stray animals.

Implementing agency and stakeholders involved

KSCCL collaborated with Kakinada Municipal Corporation (KMC) to execute this project in September 2021. While KSCCL was involved in site selection, conducting surveys, design and implementation of the project, KMC provided funding and additional manpower for implementation and was responsible for ongoing maintenance.



Process

Observing that there were no public spaces for young children-oriented recreational activities in the area, KSCCL aimed to transform Eat Street by improving its safety, accessibility, and inclusivity. The city closed an underutilised free left turn, converting a 230m stretch of the street into a pedestrian plaza, with a dedicated play zone for toddlers.

This included:

- Sensory play elements, such as a sand pit and ‘tandrums’ (drums shaped steps on which young children can skip and jump, and create and listen to the sounds as they walk), were installed in the zone and seating spaces for caregivers were created adjacent to them.
- Vehicular entry to the plaza was restricted through bollards, and food vendors were reorganised by creating designated vending spaces.
- Lighting facilities and fencing around the entire toddler zone were added, which further enhanced safety levels.

Issues faced on ground	Strategies adopted
Skilled labour was unavailable for the execution of projects.	Workshops were conducted for the staff working on-site and support was provided in the site marking process for painting the streets.
Procurement of materials and equipment in a short time span was a challenge.	Street furniture was created from recycled material. Temporary lighting facilities were provided, which were made permanent later.

Impact

Post-intervention, caregivers have reported spending more time outdoors engaging with their young children in the space. Women caregivers shared that they have started to bring their kids outdoors more frequently to play.

"We thoroughly enjoyed the place and are very happy today. Above all, there is no limit to my son's happiness. There are so many places to visit in Kakinada, but this is close to my house, about 1km. It will be wonderful if the atmosphere and activities continue here. I would visit with my son every day."
- Ms. Nadiya, Mother of Saharsh, local citizen

"Relooking at our public spaces from the perspective of a young child encouraged innovative solutions. This included, for example, designing play areas with sandpits and other nature-based elements to support healthy development. We need more such facilities in the city."
- C Hari Kiran (Collector and District Magistrate)

Finance

The total budget of the project was INR 12.7 lakhs which was funded by the KMC. An annual maintenance contract has been issued to an external vendor to maintain all the elements created under this project.

Sustainability and Scalability

- Annual maintenance contract outsourced for maintenance of the space.
- Easily replicable design elements made from recyclable material.

ADDITIONAL INTERVENTIONS IN THE NEIGHBOURHOOD – PROJECT BRIEFS

2. Claiming abandoned spaces for play near informal settlements at Anand Bharati Ground (Parks and Open Spaces, Inclusive, Playful)

The site is a multipurpose ground, has heavy footfall, and is in proximity to informal settlements, a government school, and a library. The abandoned space of around 240 sq. m. along the entry to the ground was transformed to create play spaces. Open drains were closed. The shaded space, barriers from traffic, and play equipment of recycled materials were installed. The ground, which predominantly catered to older children earlier, opened up play opportunities to young children through this intervention.



3. Activating dead spaces and creating age-appropriate play at Vivekananda Park (Parks and Open Spaces, Playful)

This park is one of the oldest recreational spaces in the city, attracting a huge footfall and offering a wide range of activities. However, the premise lacked opportunities of play for young children. The city created a dedicated play space of about 1,260 sq. m. for toddlers, including age-appropriate play equipment made of natural materials. The open-air theatre was renovated as a play space. This is potentially benefitting around 100 children and 600 caregivers on a peak day, who now spend more time outdoors amidst the greenery.



Way Forward

- Building on positive reception to the interventions, Kakinada aims to create more public spaces by transforming abandoned plots near informal settlements into play areas.
- The abandoned premises around existing AWCs and PHCs will be transformed into fully functional play areas for young children by replicating the components from the pilot interventions above.

#5 KOCHI: Creating outdoor play spaces in 29 Anganwadi centres, and enhancing public spaces with young children-centric amenities

The densely populated neighbourhoods of Fort Kochi have the highest concentration of young children within the Kochi Municipal Corporation area. However, the open spaces available in Fort Kochi are located far from residential areas, resulting in a shortage of easily accessible play areas within walking distance. This makes it difficult for families to take their children for outdoor play and leisure. Many residents, including marginalised groups, depend on city-level parks and AWCs.

As part of the Nurturing Neighbourhoods Challenge, Kochi is developing safe and multifunctional play areas within 29 AWCs in Fort Kochi, transforming residual neighbourhood spaces into safe and accessible recreational spots for families and improving city-level open spaces by adding age-appropriate play features and amenities that cater to young children and their caregivers.

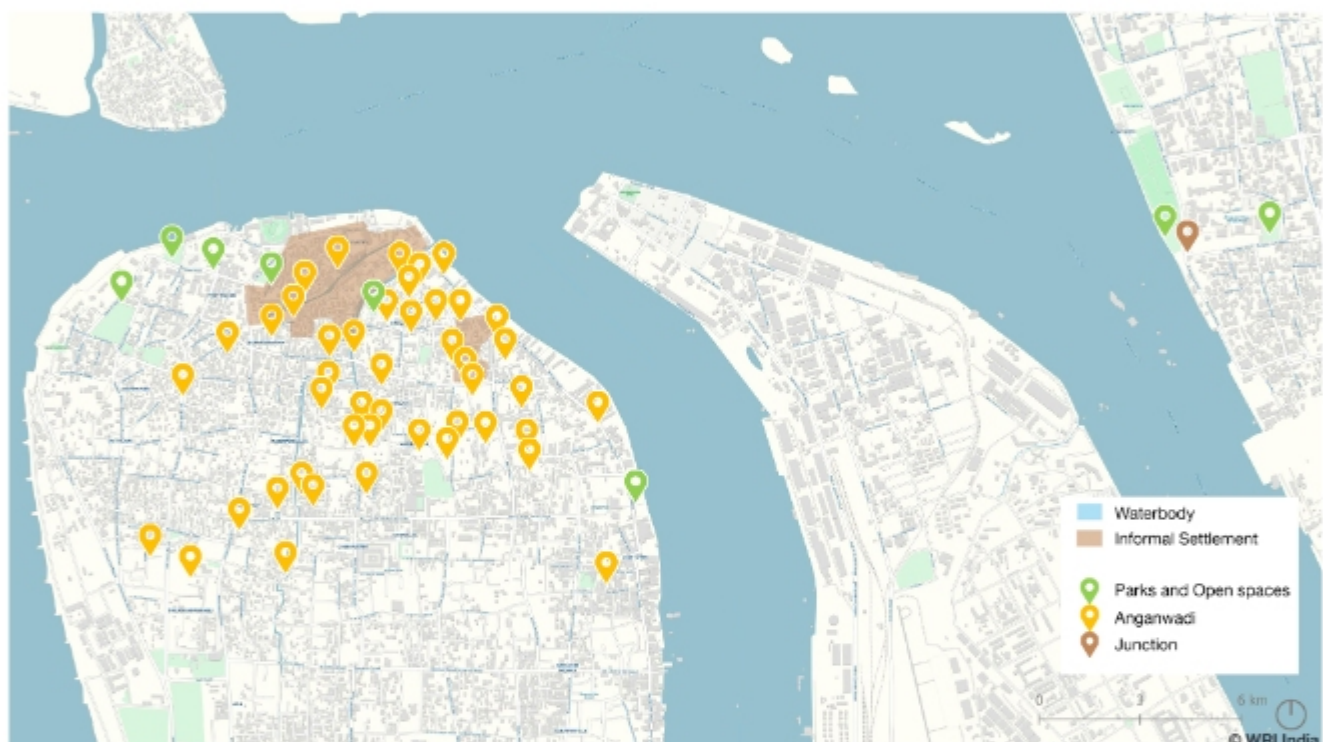


Figure 5.5 Projects implemented in Kochi city as part of the Nurturing Neighbourhoods Challenge

Strategies for Scale-up

Kochi's strategies for adopting a child-friendly approach to projects include:

1. Organising Regular Civic Engagements: This involves bringing together relevant stakeholders, including caregivers of young children, community members, representatives from Integrated Child Development Services (ICDS), Kudumbashree (a women's empowerment and poverty eradication programme), and local leaders, throughout the life-cycle of projects to foster a sense of ownership.

2. Creating a Network of Local Champions: Ward councillors have been playing a key role in mobilising the community to secure their buy-in, advocating the young children and caregiver-friendly approach, and ensuring active participation in projects.

These aim to ensure that the urban development agencies in Kochi consider the needs and perspectives of children, making the city more child-friendly.



Ward Councillor discussing the design proposal of Poovath Street with local residents during a focus group discussion



Ward Councillor leading a traffic awareness campaign in collaboration with Rotary Club and Traffic Police at Gandhi Square, South Ernakulam

MAIN CASE STUDY: Developing family-friendly recreation space along Poovath Street, Fort Kochi (Parks and Open Spaces, Accessible, Playful)

Project background

The Poovath neighbourhood lacks designated areas for children to play and for families to gather, leading them to rely on city-level spaces, such as distant beaches and parks for recreation. However, these spaces are often dominated by older male children and lack safe, dedicated play areas for young children. Consequently, children in the neighbourhood have few opportunities for accessible outdoor play and are increasingly confined indoors. The aim was to reclaim the unused space along the residential street of Poovath, previously encroached by parking and prone to antisocial activities, and transform it into a safe and accessible recreational area for all.

Implementing agency and stakeholders involved

Cochin Smart Mission Ltd. (CSML) partnered with Kochi Municipal Corporation to implement this initiative. CSML was involved in tasks such as site selection, conducting stakeholder consultations, managing funds, coordinating between departments, and establishing a network of community champions. The Corporation was approached to obtain necessary project approvals. The ward councillor from the Corporation played a vital role in engaging the local community, raising awareness about the significance of neighbourhood play areas through active communication during FGDs, and collecting resident feedback on proposed designs. The maintenance of the space is being overseen by the contractor and members of Kudumbashree.



Process

CSML identified a 450 sq. m. space along Poovath Street, next to the Kochi Biennale venue, which was previously used for on-street parking. The Ward Councillor was supportive of the idea of creating a family-friendly pocket park and facilitated community mobilisation. The project began with site visits and on-site data collection and surveys to understand the existing use patterns.

To further engage the community, an FGD named *Kootam Koodam*, ('Let us get together' in Malayalam), led by the Ward Councillor was conducted. The female residents, especially the members of Kudumbashree helped ensure maximum community participation.

During an interactive mapping exercise, residents highlighted issues such as the lack of dedicated play and recreational spaces for young children and their caregivers in the neighbourhood and the presence of antisocial activities. Most caregivers expressed the desire to use exercise equipment and play areas along with the need for dedicated gathering areas, specifically for female caregivers. The community agreed to relocate parking, creating space for the park. To foster a sense of community belonging, a drawing competition was organised for local children, whose artwork was curated by local artists and student volunteers into a mural painted along the park's feature wall.

After consulting with the community, the parking area was relocated and this 100m stretch was converted into a play area with age-specific play options, such as sand play and a low-height obstacle course that doubles as seating, encouraging flexible group and imaginative play. Additionally, the public space includes exercise and interactive spaces, catering especially to women in the community. This initiative has provided safe play opportunities, particularly for girls, increasing outdoor time for children and caregivers.

"It is the responsibility of a people's representative to help execute the project in response to the needs and best interests of people."

- Mr. T K Ashraf, Ward Councillor (Fort Kochi) Kochi Municipal Corporation



Civic engagement involving community members including children, in design conception of pocket park at Poovath Street.



Issues faced on ground	Strategies adopted
On-street parking encroachment by residents who ignored reminders to park on the opposite side was a challenge, as they blocked access to the play area.	Consistent community engagement, with the Ward Councillor helped in securing community buy-in.
The implementing agency and local contractors resisted the use of natural materials for play equipment and surfaces due to concerns about potential vandalism.	Exposure visits to peer cities and regular capacity building sessions sensitised the contractors and the implementing agency to the benefits of using natural materials for developing play surfaces for young children.
The grass intended as a fall surface around the play equipment was eaten by goats.	Using sand and Ethylene Propylene Diene Monomer (EPDM) as play surfaces yielded positive outcomes. When compared with grass, the use of these materials expanded the scope of providing safe and imaginative play opportunities and reduced vandalism and maintenance.
Rough handling of play equipment by older children led to frequent breakages, leading to safety risks for younger children.	A local resident led a community engagement session with parents of older children to ensure that the older children do not use play equipment meant for the younger children.

Impact

The intervention has significantly benefited children and their families in Poovath and its surrounding areas. Post-assessment surveys indicate that caregivers and children are now spending over an hour playing outdoors, with a heightened sense of security. This marks a 2.5x increase in the average time spent outdoors and a 3x increase in caregivers taking children outside for play.

Female caregivers, including elderly women and mothers, and young girls use the area for recreation during early mornings and late evenings. Caregivers are actively engaged in community action to maintain the space. For instance, a local doctor organised a meeting with parents to seek their help in preventing older children from using equipment meant for younger children. The park also attracts young families from neighbouring areas, boosting its footfall, particularly on weekends.

"Places such as Nehru Park in Fort Kochi is always busy, and Ernakulam Park is far away from our home. The new play space on Poovath Street is safe, clean, and easily accessible for school children. We bring our children here on scooter since there are no similar play spaces nearby."

- Father of a 4yr old child, Karippalam, Fort Kochi

Additionally, city officials are collaborating with caregivers and local ward councillors in identifying similar spaces in the surrounding areas, ensuring inclusive participation from vulnerable communities in co-creating solutions. They are using young children-centric data to guide their decision-making. The agencies are actively seeking partnerships with organisations such as Kudumbashree and the Rotary Club to develop and maintain these spaces.

Finance

Funded by CSML, the total budget of the project was INR 1 crore.

Sustainability and Scalability

- The maintenance of the park is collaboratively managed by the contractor, with a three-year maintenance contract, and women from Kudumbashree.
- CSML aims to identify underutilised areas within other Fort Kochi neighbourhoods to develop age-appropriate, safe, accessible, and vibrant play spaces. Ward councillors are included in all subsequent project discussions to ensure community involvement.
- Through this project, a key takeaway for the city agencies was that community engagement throughout the project cycle significantly benefitted the project, highlighting the importance of an inclusive planning process.
- The city agencies realised the impact of empowering champions, such as ward councillors, who played a crucial role in advocating for a planning and design approach that considers the needs of young children in future projects.
- CSML shared the park design guidelines with Kochi Municipal Corporation to serve as design recommendations for future park projects, ensuring inclusive development.

ADDITIONAL INTERVENTIONS IN THE NEIGHBOURHOOD – PROJECT BRIEFS

2. Improving access and creating safe outdoor play spaces at Eraveli Anganwadi centre (ECD Facility (anganwadi centre), Playful)

The AWC is located in a residential neighbourhood with dilapidated access and lacked play and waiting spaces. The surrounding areas were filled with construction debris. The city revamped the AWC with provisions for safer access and created playful outdoor spaces and shaded waiting areas. This not only increased teachers' confidence in allowing children to play outside, thereby extending their outdoor playtime, but also added over 30 sq. m. of public space with the potential to become a community anchor.



3. Creation of play and recreational opportunities in T.M. Mohammed Park, Eraveli (Parks and Open Spaces, Accessible, Playful)

The neighbourhood park previously had limited accessibility due to high boundary walls and was prone to antisocial activities. The community came together to break down the compound wall, creating multiple entry points, thereby improving visibility. Seating spaces and informal play opportunities were added. This revitalised 260 sq. m. park, which now serves around 100 users, including about 30 children, mostly girls, on a daily basis during peak days and provides a safe outdoor space for women. It has increased children's outdoor playtime and enhanced social interaction among caregivers.



4. Refurbishment of street infrastructure and junction improvement at Gandhi Square (Streets, Safe)

The Gandhi Square intersection, which connects streets leading to key open spaces in the city, previously lacked adequate pedestrian infrastructure, causing pedestrians to jaywalk and exposing them to moving traffic. The intersection was redesigned to include safe pedestrian infrastructure, such as 280 sq. m. of refuge islands and pedestrian crossings, and ramps were added to footpaths at level changes to ensure barrier-free access for all users. Additionally, multi-height seatings made from recycled plastic were installed. The city also conducted an awareness campaign emphasising the importance of prioritising pedestrian movement, especially for young children and caregivers. This campaign involved local leaders, Rotary Club members, traffic police, and the community to improve road safety practices. This has significantly improved pedestrian safety and reduced jaywalking incidents.





Way Forward

- The city intends to adopt design guidelines to scale young children-friendly AWCs across Kochi.
- Additionally, it aims to improve all public spaces to better accommodate young children and families. This includes incorporating age-appropriate, nature-based, and sensory play areas, as well as caregiver-friendly amenities, such as nursing booths and child-height toilets.
- Taking inspiration from the successful Poovath Street project, Kochi intends to develop more such neighbourhood-level play spaces by repurposing unused areas along streets frequented by children. The goal is to establish a network of small, accessible play areas within neighbourhoods.
- The city agencies aim to partner with other urban development agencies to expand child-friendly initiatives throughout the city.

#6 KOHIMA: Creating one pocket park each in 19 wards of the city

Kohima, a hilly city in Nagaland in the northeast with a population of less than 3 lakhs (Census of India 2011), lacks dedicated play spaces for children due to limited land availability caused by its rugged terrain. To address this, the city plans to develop at least one pocket park in every ward by reclaiming underutilised residual spaces, as well as spaces in ECD facilities.

The city's pilot interventions included transforming residual spaces, such as dumping grounds, into dedicated toddler play areas near a government school, an AWC, and a bus stop. These experiences were then used to inform the city's scale-up efforts.

Since much of the land in Kohima is privately owned, developing public spaces requires community consensus. The city is reclaiming land to develop public spaces through a formalised system, engaging with Ward Panchayats via community meetings to achieve agreement on projects. These efforts have spurred demand for similar projects, prompting the government to expand these initiatives citywide.

In addition, Kohima is developing customised design guidelines for creating play spaces in hilly terrains, with plans to adopt these guidelines through official policy mandates.

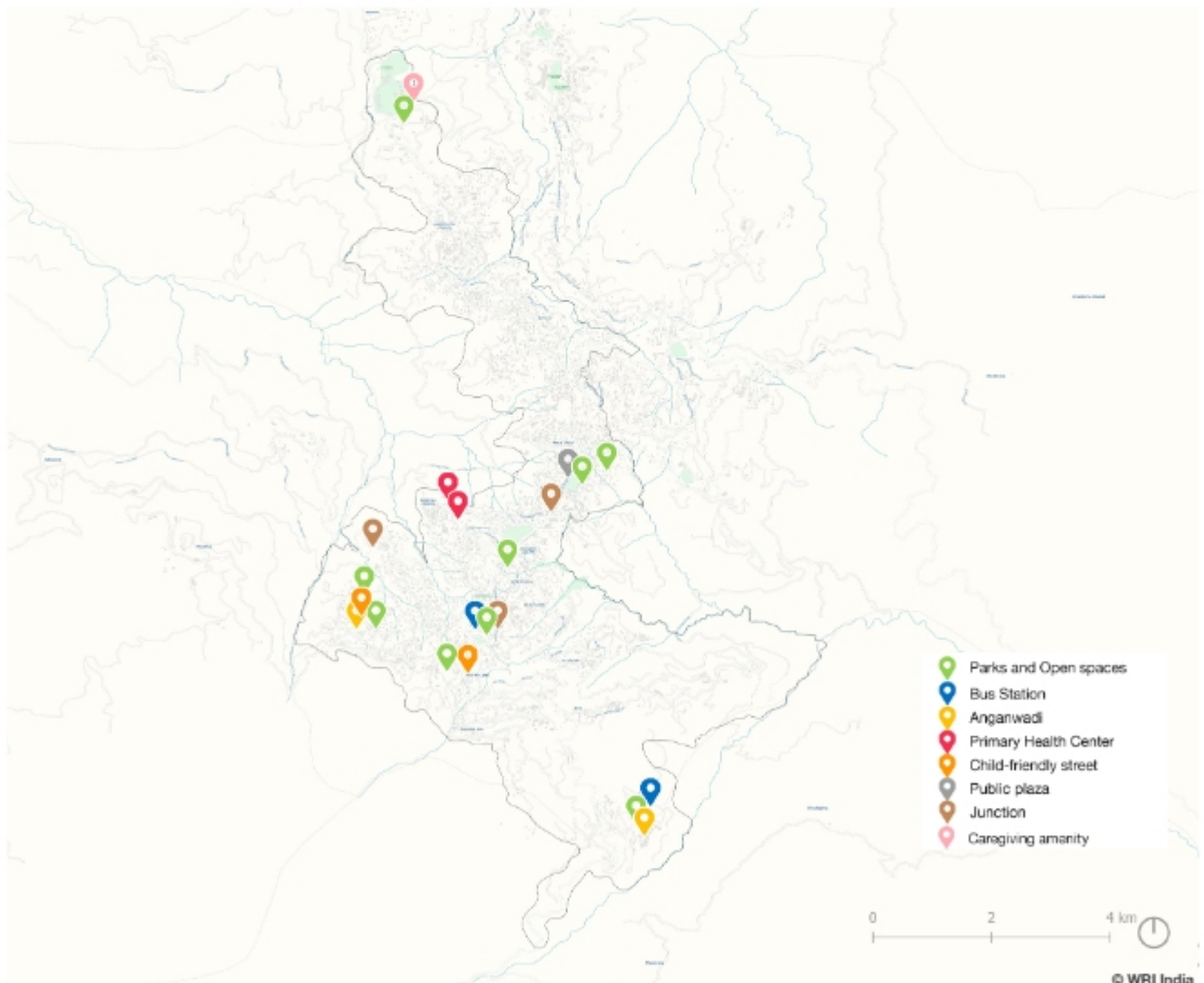


Figure 5.6 Projects implemented in Kohima city as part of the Nurturing Neighbourhoods Challenge

Strategies for Scale-up

Kohima has adopted the following key strategies to scale young children-friendly projects across the city:

1. Developing one child-friendly public space in every ward: Kohima aims to revitalise the city by creating pocket parks and public spaces in every ward. It involves developing one public space per ward with active community participation. Innovative solutions are being explored to develop play areas around government schools, PHCs, AWCs and other community spaces due to limited land availability.

2. Mobilising community for inclusive and child-friendly development: Community involvement has been central to all projects in Kohima. With most land being privately owned, raising awareness among residents about child-friendly city development has been crucial for these initiatives. Successful child-friendly public space projects have led to a strong demand for similar initiatives in other wards. The Kohima Municipal Council has directed all 19 wards to identify underutilised spaces that can be transformed into pocket parks for children and the community. Several wards have responded by identifying such spaces and are now collaborating with Kohima Smart City Development Ltd. (KSCDL) to develop these pocket parks.

3. Building capacities of government stakeholder departments: The city has been organising capacity building sessions and engagement activities to build the technical know-how of government stakeholders (across various levels) such as Public Health Department, Traffic Police Department, Education Department, Urban Development Department etc.



Community engagement session with Ward Committee members.

**MAIN CASE STUDY: Community-led reclaiming of space into pocket park for young children in Forest Colony
(Parks and Open Spaces, Playful, Accessible, Inclusive)**

Project background

In the land-starved hilly city, the local community came together to convert a residual space dumped with waste into a pocket park for young children and their caregivers.

Implementing agency and stakeholders involved

KSCDL collaborated with residents of the Forest Colony and the local Ward Committee to execute this project.



Process

Previously a dump yard near the Forest Colony Ward office, the residents of the neighbourhood came together to transform the residual space into a pocket park for young children and caregivers. Following several stakeholder meetings with the local community to understand their needs, KSCDL devised an action plan that involved cleaning and elevating the site using locally sourced stones, followed by leveling with rammed earth. The reclaimed space featured various play opportunities, including toddlers’ equipment and a sandpit, comfortable seating, and a library shelf with children’s books. The area was also landscaped with new plants. To ensure safety, railings were installed around the pocket park, and a signage to indicate the child priority zone was mounted. Bold, colourful patterns were painted on the carriageway to slow down traffic, and vibrant murals were added to the opposite building walls and enclosing retaining walls to enhance the area's appeal. The Ward Committee members and residents were constantly involved throughout the process of implementation, including plantation and painting of murals.

Issues faced on ground	Strategies adopted
It was difficult for the city agency to source materials for building retaining walls.	The rocks and stones from the landslides were repurposed to construct the walls.
It was difficult to secure funds for the project execution within the limited timeframe.	Residents of Forest Colony started a crowdfunding campaign to finance the entire project.

Impact

This pocket park demonstrated how play can heal, as it became a safe outdoor space that provided opportunities to play, learn, and socialise for children, while also providing caregivers with opportunities to interact. A significant increase in footfall was observed from both the local and neighbouring wards, with over 300 children in the community potentially benefiting, residing in the benefit zone (500m walking distance) from the newly added play opportunities. Traffic calming measures were successful in slowing down the vehicles along the access street. The community's involvement throughout the planning and implementation stages fostered a sense of ownership, with the local youth and women actively maintaining the park.

"The most rewarding experience is being able to hear from all mothers of the Forest Colony stating how safe it is to walk with their toddlers to the new park and children conveying their sheer joy of having a play area right next to their homes."

- Ms. Alibo Achumi, Resident of Forest Colony

Finance

The entire project cost INR 5 lakhs and was crowdfunded by the residents of Forest Colony.

Sustainability and Scalability

- RWA of Forest Colony manages the maintenance of the park from a portion of the monthly maintenance and security fee collected from residents.
- The success of this project demonstrated the potential of reclaiming underutilised residual spaces to create pocket parks, with active support from the community. Many other neighbourhoods in the city also placed their demands for such public spaces, leading to the city's initiative of developing one pocket park in each ward.
- The maintenance model used in Forest Colony park inspired the city to encourage communities to take responsibility for the upkeep of future projects.

ADDITIONAL INTERVENTIONS IN THE NEIGHBOURHOOD – PROJECT BRIEFS

2. Unity Park at New Minister's Hill (Parks and Open Spaces, Inclusive, Accessible, Playful)

The city agency reclaimed a residual street side space to create a child-friendly pocket park with the help of the local community by reorganising parking along the access to a Cathedral. The interventions included creating a waiting and play area, renovation of the waiting shed, closing of open drains, adding play equipment and floor-painted games and creating a small garden with the help of the Ward Women's Association. To enhance access to this pocket park, traffic calming measures, such as pedestrian crossings and signages, were added. A low-height boundary was installed to demarcate and protect the play space and prevent parking encroachment, while a railing along the upper edge safeguarded children. The city agency collaborated with New Minister's Hill Ward Association and Ward Women's Association to implement the project, while also signing an MoU with them for the maintenance and upkeep of the pocket park. This space has become a community anchor, serving as a public space for young children and families visiting the area.



3. Rooftop Sensory Park (Parks and Open Spaces, Inclusive, Accessible, Playful)

The land-starved hilly city strategically converted the rooftop space of a public toilet complex to create a sensory park with a variety of play opportunities and community gathering space, close to the high footfall area of the city centre. The 340 sq. m. sensory park consists of a sandpit, a grass mound with a tunnel, acoustic play elements, sensory pathways, age-appropriate play equipment, and shaded, multi-height seating. Collaboration with local craftsmen facilitated the creation of various acoustic and sensory elements. Elements of Naga heritage have been used throughout the sensory park to foster a connection with the local community. The public toilet has also been provided with caregiver amenities, such as a diaper changing station, and is universally accessible. The city agency has signed an MoU with the neighbourhood Ward Youth Association for regular maintenance and upkeep.



4. PHQ Junction Improvement (Streets, Accessible, Safe)

The junction was redesigned with the support of the Nagaland traffic police to tackle traffic congestion in the connecting roads. The city carried out a tactical trial to improve the junction. The interventions included demarcating pedestrian crossings, creating pedestrian refuge spaces, removing encroachments caused by unregulated parking and street vending, relocating bus stop 50 m ahead of the junction, marking dedicated parking areas, designating zones for taxi and two-wheeler drop-offs, and installing signage. Dedicated vending zones were retained within these refuge islands.

These interventions led to convenient pedestrian movement, better traffic channelisation, reduced

congestion, and improved traffic control by the traffic police. Additionally, the traffic police ran awareness programmes and tested an automated traffic management system (ATMS) to incorporate pedestrian crossing times into traffic signals. The awareness programmes effectively changed parking patterns around the junction. Due to the success of this trial, the city is currently in the process of implementing it as a permanent intervention.



Way Forward

- Kohima aims to scale up pocket parks and public spaces city-wide by developing one public space per ward. This involves creating play areas around streets, near schools, ECD facilities, and other key locations.
- The city plans to identify programmes and schemes that can be leveraged for the development of public spaces across the city.
- The city plans to regularly engage with all relevant stakeholders through FGDs, Panchayat meetings, campaigns, etc. to build an ecosystem that advocates for a child-friendly approach.
- Kohima is developing customised design guidelines for creating play spaces in hilly terrains, with plans to adopt these guidelines through official policy mandates.

#7 ROURKELA: Targeting to enhance quality of life for young children in vulnerable communities, with improvement of public spaces

It is estimated that 35% of Rourkela's population resides in marginal neighbourhoods that lack access to ECD facilities and amenities. Recognising this need, the city agencies have defined their vision to scale interventions that improve access to public spaces and ECD facilities and amenities, thereby enhancing opportunities for underprivileged children and caregivers in the city.

To achieve this, the city is implementing three key strategies: establishing a multi-sectoral NN Cell, which facilitates scaling young child-friendly interventions in every project in the city; leveraging financial convergence from various National, State and city-level programmes to improve public spaces and ECD facilities; and institutionalising capacity building of frontline workers to enhance their skills and capabilities, ensuring provision of enhanced services.

So far, the city has intervened in 15 vulnerable neighbourhoods, is developing ECD facilities such as AWCs and PHCs, and is creating public spaces with play opportunities for young children. Going forward, Rourkela plans to develop 120 new AWCs in vulnerable settlements, upgrade 138 slums with play spaces, and incorporate caregiving amenities in 10 PHCs, including age-specific play and caregiving amenities.

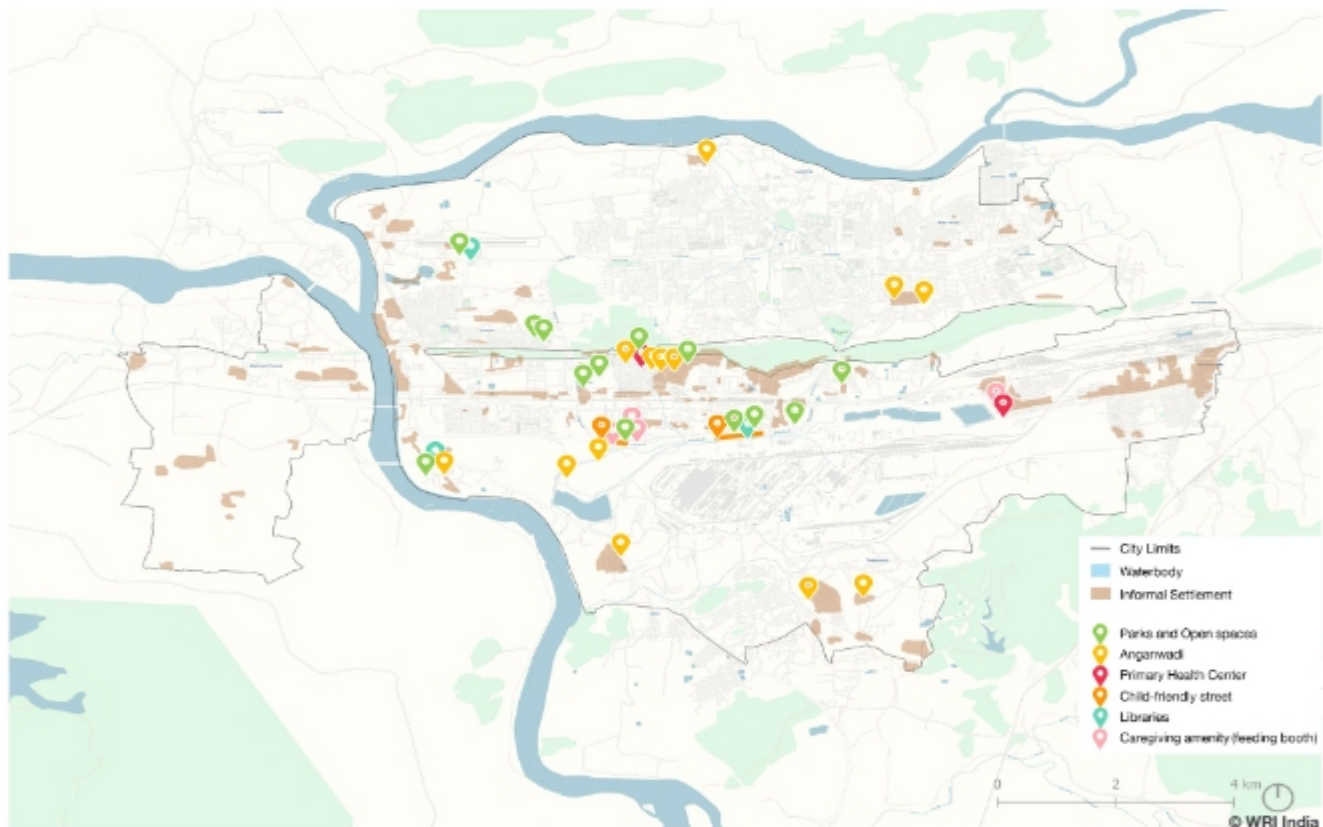


Figure 5.7 Projects implemented in Rourkela city as part of the Nurturing Neighbourhoods Challenge

Strategies for Scale-up

Rourkela adopted the following three strategies to scale young children-friendly development in vulnerable settlements:

1. Establishing NN Cell: Rourkela has set up a multi-sectoral NN cell headed by the Municipal Commissioner, Rourkela Municipal Corporation (RMC). The members include Deputy Commissioners (RMC), Town Planner of Rourkela Development Authority, data experts and engineers, City Mission Manager, Child Development Project Officers (ICDS), AWWs (ICDS) and workers of women self help group. The Cell facilitates the scaling of young children and caregiver-centric projects across the city in partnership with diverse stakeholders.



Leveraging multi-sectoral Nurturing Neighbourhoods Cell to incorporate child-friendly measures in every project in Rourkela city

2. Financial convergence of development schemes: Rourkela is implementing young children and family-friendly interventions by leveraging convergence with city-level funds from RMC and Rourkela Smart City Ltd. (RSCL), District Mineral Foundation (DMF), State-level schemes such as JAGA (land titling and slum upgrading programme), Mukhyamantri Karma Tatpara Abhiyan (MUKTA), Mission Shakti (women's SHGs), Urban Transformation Initiative (UNNATI) missions, and National mission Atal Mission for Rejuvenation and Urban Transformation (AMRUT) to provide play spaces and basic services in vulnerable settlements involving communities and to build new AWCs across the city.



© WRI India

Figure 5.8 Convergence of National, State, and city- level schemes adopted by Rourkela

3. Institutionalising capacity building of frontline workers: Rourkela has initiated a monthly capacity building programme for frontline workers in AWCs. This programme aims to sensitise them about the importance of outdoor play. It also emphasises using play as a learning aid in their teaching curriculum. The programme is aligned with the ICDS training and formalisation of an institutional setup with women's SHGs.



Capacity building of frontline workers (AWWs, healthcare staff)

Main case study: Clustering child-friendly facilities and play spaces in Ruputola slum (Parks and Open Spaces, Inclusive, Playful, Accessible)

Project background

Frequent antisocial activities occurring in a run-down play space in Ruputola slum hindered its everyday use by women caregivers and their children. To overcome these negative user patterns, the women caregivers in the local Slum Dwellers Association (SDA) expressed the need to bring the community together to reclaim this play space for their children. SDA and women's SHGs came together and presented their suggestions to the city authorities. The city agency collaborated with the SDA and women SHGs and planned to create a cluster of children and caregiver-centric facilities and amenities in the slum. This approach helped in transforming the neglected space into a thriving public space for the community by significantly increasing their access to clustered ECD services and public spaces.



Young children and caregiver- friendly cluster development at Ruputola slum

Implementing agency and stakeholders involved

The stakeholders included RMC, RSCL, Matru Shakti Welfare Trust, Ruputola SDA, Jagruti SHG, Jal Shakti Ward No. 6, Jyoti SHG, Godabari SHG, DWCD, and residents of Ruputola slum. RSCL collaborated with RMC for the execution of this project. While RMC was involved in site selection and conducting stakeholder consultations, RSCL identified relevant State Missions and programmes to leverage funding. In addition, more than 200 caregivers from the local community were involved in the planning and implementation process of these play and recreational spaces.

Process

The Ruputola slum had a large open space near the temple that was neglected and overrun with waste and dense vegetation. This area became a gathering spot for men engaging in loitering and antisocial activities, including consuming alcohol. Women caregivers in the community wanted to reclaim this abandoned park for their children, who had to travel to distant neighbourhoods to play. The women's SHG, Jal Sathi, and Mahila Shakti Committees discussed the situation with other community members and decided to revive the park. They submitted a written request to the RMC.

In response, RMC officials, along with the SDA Secretary, visited the site to assess its issues and potential. The city agencies then utilised funds from various State and city-level schemes to develop the area. The cluster within these reclaimed spaces include a mobile library for young children, a community space along the temple with shaded seating and play area, an AWC, a play area for young children with sand pit, and other play equipment and an open gym for caregivers. This development turned the space into a multifunctional area for all users. An MoU has been signed



Women and children from different communities participating in a meeting to discuss reclamation of the abandoned park



RMC officials visiting the site and meeting with women representatives to understand the onground issues



Women SHG workers and community members involved with city agencies in project planning and execution

between RMC and Ruputola SDA to oversee the operation and maintenance of the public space. Throughout the process, city officials frequently sought guidance from the local SHGs on the placement of amenities. These groups assisted with the design and implementation of the park. The clustering of child-friendly facilities created opportunities for everyone in the community, including caregivers, adults, and the elderly. They could now use the public space for various community events, daily walks, and yoga practice.

Issues faced on ground

Strategies adopted

Antisocial activities used to take place in the abandoned play space, causing women and children to feel unsafe.

Sensitisation among residents through discussions, surveys, and involving them at various stages of the project was effective. Additionally, encouraging community champions to lead the change proved beneficial.

Organising the redevelopment of the large, abandoned open space around the park was a challenge.

Female caregivers from the communities suggested the inclusion of child and women-centric amenities and facilities in the open space.

Finance

The Ruputola cluster was implemented by leveraging convergence with State and city-level funds. The RMC funded the installation of a mobile library, while RSCL developed the play area. The DMF fund supported the development of a new AWC. State schemes such as JAGA improved access and drainage, and MUKTA involved slum residents in construction work. Mission Shakti engaged women in the maintenance and operations of the public space.

Impact

Being closer to the community, the public space has encouraged women, children, and the elderly in the neighbourhood to spend more time outdoors for play, social interaction, and work. Young children and caregivers from nearby settlements now visit this place regularly to play and spend time outdoors instead of going to faraway neighbourhood parks. Women of different age groups are found spending quality time here with their children, grandchildren, friends, and families. Over 30 women caregivers visit the cluster daily, spending more than an hour and socialising with other people from their community. The increased footfall of children and caregivers has made the public space safer and deterred antisocial men from loitering in the area. This has also helped women gain ownership of the public space.

The clustering of women and children-centric amenities and facilities has helped women caregivers engaged in daily labour to leave their children in the library, where they are taken care of by the SDA workers in charge. This has improved economic opportunities for the working women in the settlement.

"Once overgrown with bushes, the area is now clean and draws women from nearby slums who visit throughout the day, prompting the men who used to gather here to self-reflect and cease their negative activities."

-Ms. Jyotsna Kisan, Secretary, Ruputola Slum Dwellers Association, Ruputola slum



(L-R): (Row 1) Playspace within AWC, Open gym; (Row 2) Walkways as meditation space, Multi-purpose temple ground; (Row 3) Toddler's park, SHG meeting in library

Sustainability and Scalability

The operation and maintenance of the play spaces have been handed over to the Ruputola SDA members through an MoU signed between RMC and SDA. Additionally, AWWs, women SHGs, Swachha Sathi helpers, and local representatives are also involved in maintaining the upkeep of the area.

The city plans to scale similar interventions through JAGA mission in 138 slums of Rourkela, collaborating with local SDAs from nearby areas, aiding in scaling and maintaining these interventions in their communities. This effort, in turn, will help create a sense of ownership among the locals.

ADDITIONAL INTERVENTIONS IN THE CITY – PROJECT BRIEFS

2. Improving access for pedestrians to Sensory Park (Streets, Accessible)

Rourkela developed a city-level sensory park with special considerations for young children's needs. However, the street connecting to the park lacked a dedicated pedestrian space, making it unsafe for everyone. To improve access, the city revamped this 300m stretch, providing a continuous pedestrian walkway with pause points, floor-painted games, lighting, and shaded seating at regular intervals. This enhancement has ensured safe and comfortable access to the sensory park for young children from nearby slums and increased safety and convenience for all pedestrians, even late at night.



3. Data-based planning approach to scale AWCs in vulnerable settlements (ECD Facility (anganwadi centre), Accessible)

Rourkela has utilised young children and caregivers-oriented data to identify vulnerable settlements with inadequate access to ECD facilities. By using a GIS-based spatial mapping system, the city identified neighbourhoods that lacked AWCs and those that were underserved by the existing AWCs. Through this mapping initiative, the city recognised the need to develop 120 new AWCs across various neighbourhoods. The city agencies have already implemented 10 model AWCs leveraging funds from the DMF. These new model AWCs have been designed using the BaLA (Building as Learning Aid) concept and include outdoor play areas, *Mamta Griha* (nursing room), kitchen garden and waiting spaces. This effort has enabled the city to prioritise development projects to better match demand with supply, enhancing inclusion for vulnerable settlements.



Figure 5.9 Map showing extent of existing young children-friendly public spaces and facilities with pedestrian shed across city

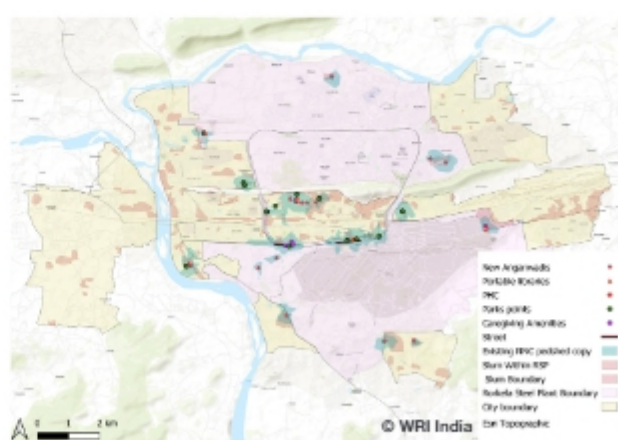


Figure 5.10 Map showing extent of newly added young children-friendly public spaces and facilities with pedestrian shed across city

4. Enhancing public spaces of Rourkela with caregiving amenities (ECD Facility, Accessible)

Women often find it inconvenient to feed their infants in public spaces, which can limit the time spent outside their houses and impede economic opportunities. To address this, the city introduced nursing pods in multiple locations, such as parks, markets and early childhood services. The city agency also added a daycare crèche facility within the government building to support working caregivers with young children. Subsequently, various capacity building programmes and social awareness campaigns were initiated to educate citizens on healthy breastfeeding practices. This pioneering intervention in the State of Odisha garnered an enthusiastic response from numerous women caregivers, who now feel more comfortable traveling outdoors with their young children.



Way Forward

- The city administration is scaling efforts to raise awareness and build capacities of stakeholders, including city officials, caregivers from different organisations, and community groups, towards initiatives that promote the well-being of young children.
- Rourkela aims to extend its reach to more vulnerable populations by introducing additional interventions in public spaces within these areas and organising regular engagement programmes with the local communities.
- The city is striving to utilise its multi-sectoral NN Cell as a catalyst to foster new partnerships with governmental and non-governmental entities, academic institutions, and NGOs.
- Rourkela plans to establish interactive Web platforms to disseminate GIS data focused on young children and caregivers through the RMC citizen portal. This endeavour seeks to share young children-focused information with the communities directly, enabling them to benefit from knowledge and engage in discussions with relevant agencies.

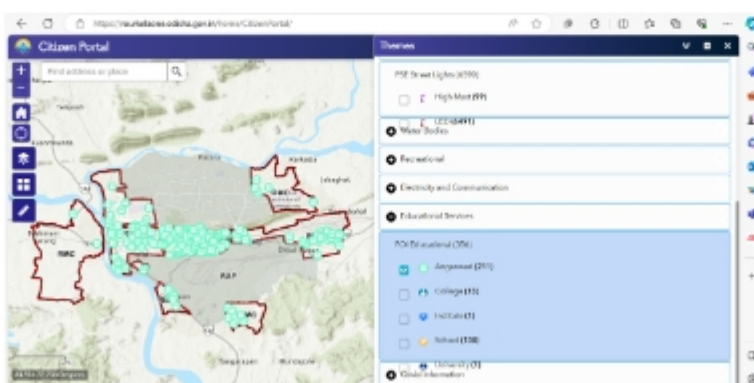


Figure 5.11 Integrating early childhood services data on citizen portal website of Rourkela Municipal Corporation

#8 VADODARA: Improving outdoor play spaces in Anganwadi centres across the city

The rapidly expanding city of Vadodara consists of a city-level park and several neighbourhood-level public spaces. However, these available public spaces often require travelling for longer distances, limiting the accessibility of outdoor play spaces for young children in the city. The neighbourhood-level public spaces seldom respond to the needs of young children and caregivers across the city, especially in vulnerable neighbourhoods. Recognising this need, the city agencies envisioned providing safe, playful, and inclusive public spaces by leveraging existing ECD facilities and public spaces. Vadodara developed pilot projects that focused on increasing access to play opportunities by transforming underutilised AWC premises. An innovative concept of a mobile play van, named Ramat Rath was tested to create pop-up play spaces in densely populated settlements where formal play areas are unavailable.

Incorporating learnings from pilot projects, the city framed its vision of enhancing outdoor play spaces in AWCs across the city. Vadodara began its scale-up journey by collaborating with various stakeholders to secure Corporate Social Responsibility (CSR) funding opportunities, enabling the city to replicate the model at multiple locations. The city retrofitted 30 AWCs with child-specific amenities and developed outdoor play spaces in 5 AWCs towards enhanced convenience of AWWs and children. This has led to increased enrolment in the AWCs.

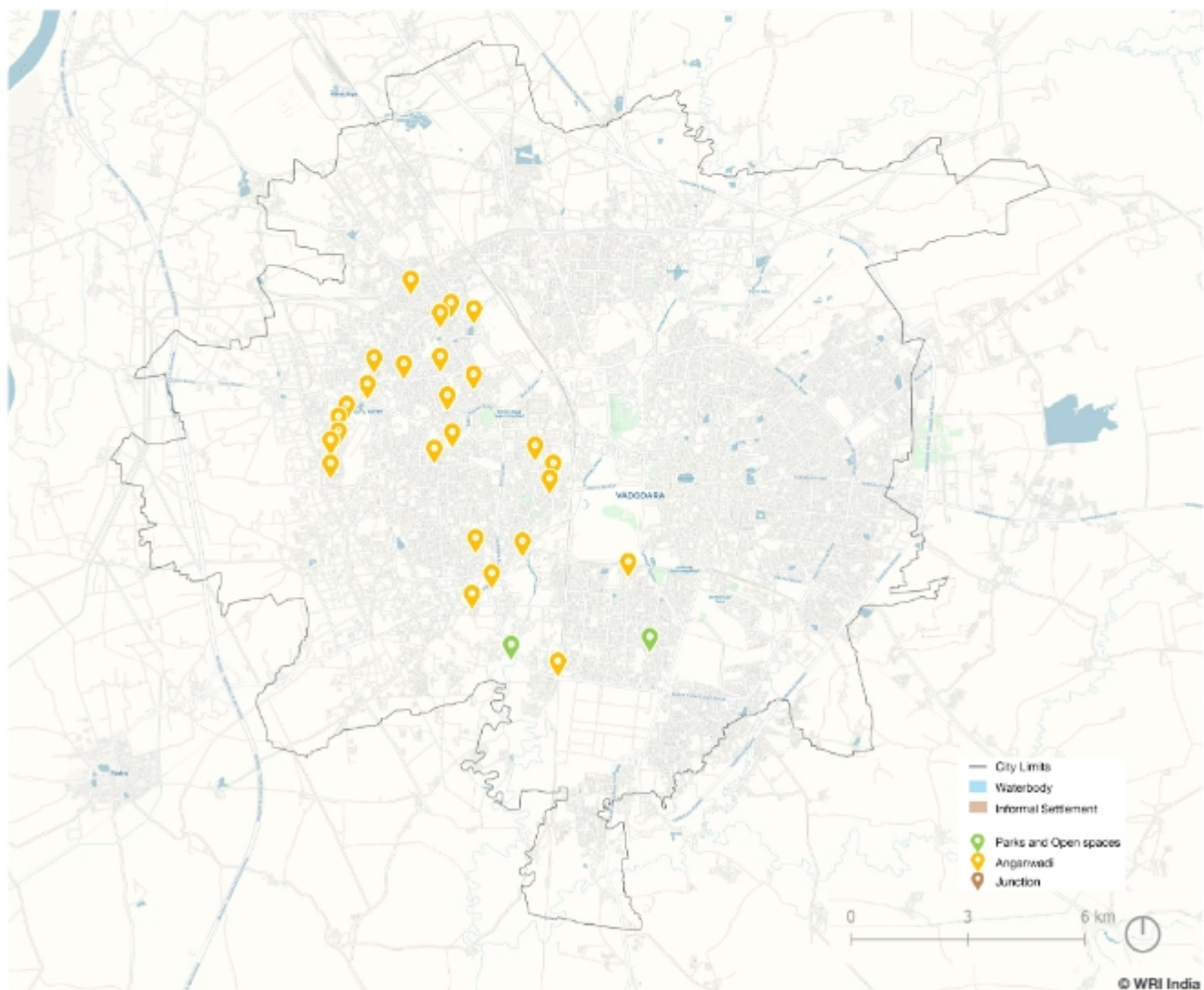


Figure 5.12 Projects implemented in Vadodara city as part of the Nurturing Neighbourhoods Challenge

Main case study: Re-imagining the AWC premises below Vadsar flyover with safe outdoor play spaces for young children (ECD Facility (anganwadi centre), Playful)

Project background

Located in an upcoming residential neighbourhood with a high population of young families, the AWC premises below the flyover was long neglected, encroached by parking and the presence of garbage dumps, all leading to antisocial activities at night. The site was also prone to flooding during the monsoons, creating health hazards for the local residents. Through this project, Vadodara Smart City Development Ltd. (VSCDL) has attempted to transform this underutilised area into a vibrant public space for young children and their caregivers, with a variety of sensory play opportunities and as a multi-purpose space for the community.

Implementing agency and stakeholders involved

The project was executed within a 75-hour timeframe as a part of the Placemaking Marathon 1.0 initiative. This was achieved through a collaborative approach, engaging multiple government and non-governmental organisations (NGOs) to work collectively on the implementation process.

VSDCL collaborated with Vadodara Municipal Corporation (VMC) and SMAID University for the execution of this project. While VSDCL was involved in site selection, surveys, and data collection, conducting stakeholder consultations, and designing project proposals, VMC contributed to on-site execution and providing necessary project approvals. In addition, it provided access to its scrapyards for building site furniture from leftover and scrap materials to adopt an effective low-cost approach to implementation.

The city agencies engaged with SMAID University and community organisations to help with the quick implementation and engagement with the local community to sensitise them. The Ward Councillor supported in the structural repair of the AWC and flyover columns. He was joined by the staff at the AWC in raising awareness within the community about the significance of child-friendly spaces.



Process

Multiple site visits and in-person interviews with AWWs and local families were conducted to understand the existing site issues and outdoor space usage pattern of the children attending the AWC during the post-pandemic period. Due to on-ground issues, such as garbage dumping and encroachment by parking, the space around the AWC was being misused for antisocial activities at night. This made the space unsafe for use by young children and the community.

Based on the user feedback, the city transformed this underutilised area into a vibrant public space, providing a variety of sensory play opportunities, and a flexible space that can host multiple community activities.

The architecture students of SMAID University took up the project as a studio exercise, and over 75 students participated in on-ground implementation and organisation of events to mobilise the community. Organisations such as Rotary Greens, along with the AWC staff, helped to engage with the local residents to sensitise them towards safe and accessible public spaces for young children and their families.

The premises were made safe and playful for the young children and their families by integrating the following elements:

- Sandpits with tyre walls to encourage free play
- Sensory pathways to stimulate cognitive and mental development, blackboard at child-height and railing mounted Gujarati / English alphabet and abacus for an interactive learning experience for young children
- Flyover columns and AWC exterior walls covered with vibrant nature-themed paintings and murals using waste marble stone chips donated by the local stone vendor
- Small amphitheater with low-height seating for multi-utility of space

This 390 sq. m. of reclaimed public space serves approximately 130 children enrolled in the AWC and those residing in the surrounding areas.

Issues faced on ground	Strategies adopted
There was water leakage from flyover during the monsoons, which, in turn, caused water logging at the site.	VMC engineers employed their teams to fix leakage issues in the flyover.
Garbage was dumped at the site adjacent to the AWC.	An NGO came forward to help clean the waste from the site and improve the overall hygiene in the surroundings.

Impact

The intervention provided a play space for the children from the AWC and the community, while also being a flexible space for the community to host various events and activities.

Post the transformation, several community activities were organised involving the children and caregivers from the community. This helped to induce a sense of ownership amongst the residents and several local shopowners came forward to help with the regular maintenance of the public space. Members from organisations such as the Indian Institute of Architects (IIA) Vadodara Chapter and Rotary Greens engaged in discussions regarding potential scaling-up opportunities across the city.



Finance

The total budget of the project was INR 9.85 lakhs, which was funded through CSR funds. The local Ward Councillor utilised the Council funds to procure street lighting and CCTV cameras, and a local stone vendor provided waste stone chips for mural embellishment on floors and walls.

Sustainability and Scalability

The project leveraged collaboration between various government and non-government agencies and organisations to complete a fast-paced, quick implementation process. This approach informed the city agencies about the importance of engaging various partners and working with them towards young children and family-friendly development.

The project also served as a pilot for leveraging CSR funds for implementation, a model further used by the city agencies to replicate outdoor play opportunities at multiple AWCs across the city.

ADDITIONAL INTERVENTIONS IN THE CITY – PROJECT BRIEFS

2. Mobile play van with pop-up play opportunities (Play van, Accessible, Inclusive, Playful)

Young children residing in dense settlements often lack access to play spaces. Ramat Rath, a mobile van with pop-up play opportunities, was introduced as a movable equipment suitable for young children. The van consists of interactive, playful elements and creates a temporary play space of around 140 sq. m. For young children in informal settlements and vulnerable areas where access to formal public play spaces is not available, Ramat Rath enables access to play.



Way Forward

Vadodara is committed to furthering its efforts in providing safe access to ECD facilities and public spaces throughout the city. This will be done by adding open spaces at various levels with nature-based play and learning opportunities. AWCs in various locations across the city will be targeted to ensure safe access, play opportunities for young children, and community spaces for all residents.

#9 WARANGAL: Developing young children-friendly parks and gardens through convergence with Greening fund

Warangal, the second largest city in Telangana, is home to a population of 0.7 million, including 0.05 million young children aged 0-6 years (Census of India 2011). About 34.9 % of the city's total population lives in vulnerable settlements (Census of India 2011), increasing their exposure to various hazards, risks, and deplorable public environment.

The majority of the city's parks are far from residential areas, making it difficult for caregivers to take their children there frequently. Additionally, Warangal's per capita open space is only 0.44 sq. m., significantly less than the 10-12 sq. m. mandated as per Urban and Regional Development Plans Formulation and Implementation (URDPFI) standards. Thus, using play as a tool, Warangal aims to create a network of vibrant and playful public spaces for young children and their caregivers, especially in vulnerable settlements through greening and sustainable strategies.

Warangal's pilot projects included AWC retrofitting, park development, and enhanced access to ECD facilities. Using insights from these pilots, the city recognised its strengths and initiated efforts to expand a network of green, playful public spaces citywide.

Replicating these initiatives throughout the city meant leveraging National, State, and city-level schemes and collaborating with government and non-governmental organisations, along with community engagement. In addition, the city is focusing on providing diverse age-appropriate play opportunities for children.

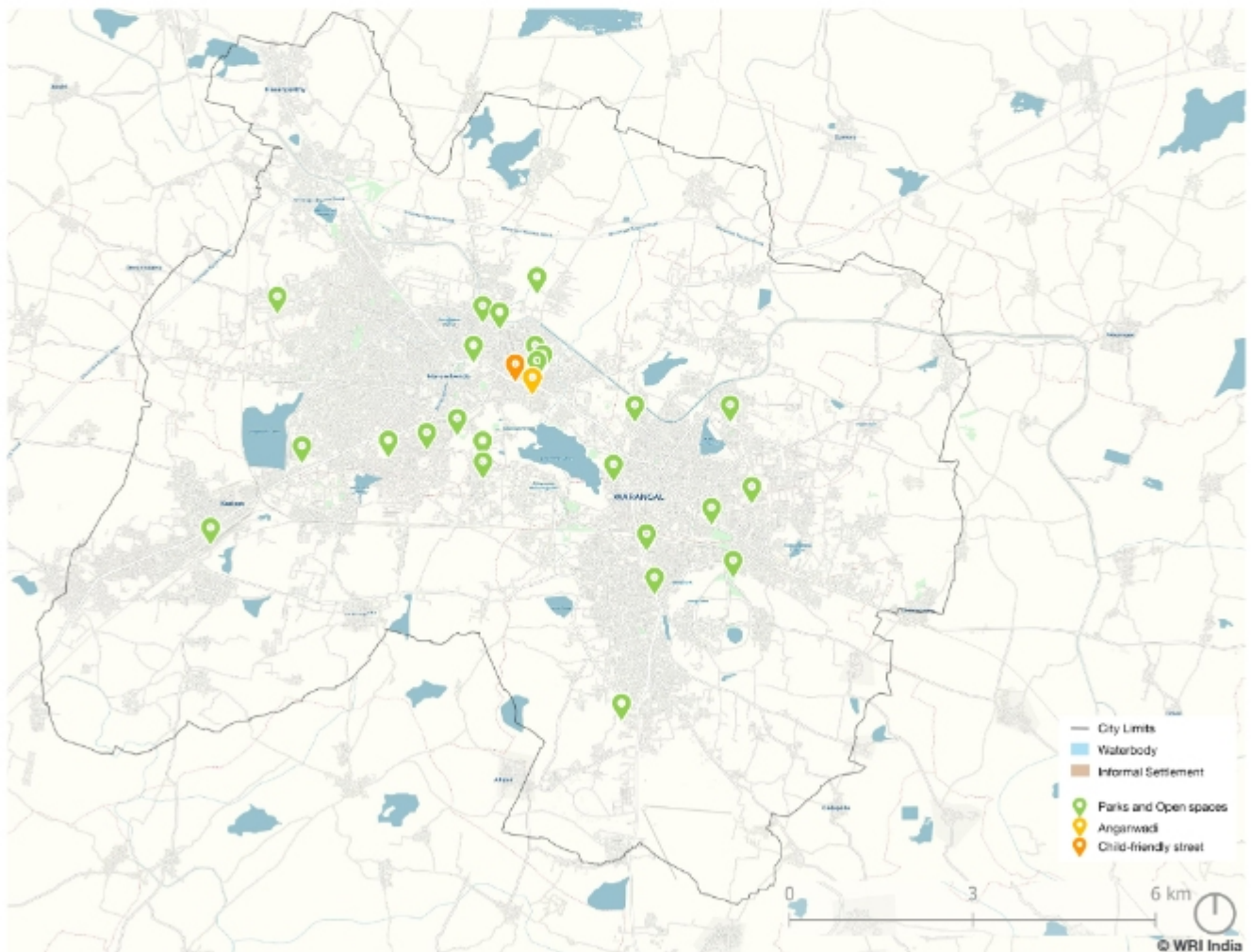


Figure 5.13 Projects implemented in Warangal city as part of the Nurturing Neighbourhoods Challenge

Strategies for Scale-up

Progressing towards the larger vision of developing young children and caregiver-friendly public spaces, the key strategies adopted by Warangal are as follows:

1. Sustainable sources of finance: The city has allocated 10% of its annual Municipal budget for the 'Greening fund', which, combined with funds from other State-level programmes such as *Haritha Haaram*, *Pattana Pragati*, *Mana Ooru Mana Badi*, is being used to expand parks and open spaces for young children and their caregivers. Warangal is enhancing the existing neighbourhood parks with age-appropriate play opportunities and adding play spaces in lower primary schools by leveraging these schemes.

2. Improving access to nature and sensory elements: Warangal is enhancing access to green spaces for young children to play, explore, and connect with nature. In every park, play elements and opportunities are being introduced or replicated using natural materials and nature-based play options, such as grass mounds, sensory walls, and similar features. Additionally, the city is undertaking extensive plantation at different scales (planting urban forests, trees along streets and intersections, establishing plant nurseries, and creating neighbourhood parks and open spaces), promoting the shift to greener and healthier neighbourhoods.



3. Involving the community at various stages of the project: The city is engaging the community through regular FGDs, plantation drives, and awareness campaigns. These are aimed at increasing awareness about the significance of outdoor play for young children and ensuring public involvement in park and open space maintenance.



**Main case study: Transforming a dump yard into a small (*Chitti*) neighbourhood park in the vulnerable settlement of M.H. Nagar
(Parks and Open Spaces, Inclusive, Accessible, Playful)**

Project background

M. H. Nagar is a vulnerable settlement in Warangal, with a significant number of young children but lacked parks or open spaces in the vicinity. Previously a dump yard and occasionally used for public gatherings, the site is located at the centre of this residential neighbourhood. It faced issues of littering and stagnant water during the monsoons, leading to water-borne diseases, such as dengue and malaria, particularly affecting young children. Additionally, children from this marginalised community were not allowed to play in the nearby parks or playgrounds, forcing them to play on unsafe streets. The city has now transformed this space into an age-specific, accessible neighbourhood park using low-cost repurposed materials.

Implementing agency and stakeholders involved

Greater Warangal Municipal Corporation (GWMC) had identified, designed, and implemented this project with support from the local Ward Corporator and residents of M. H. Nagar.

Process

Recognising the detrimental impact of the dump yard on the health of the local residents and the necessity for safe and accessible play areas for children, GWMC initiated the transformation of this 200 sq. m. area into a fully functional public space. Through the Placemaking Marathon 2.0 initiative, the city swiftly developed this park on-site in a period of less than 56 hours. Features such as a sensory pathway, balancing beam, stepping stones, sandpit, and toddler play equipment, were installed for young children, while multi-height seating spaces and a walking track were provided for caregivers. The Greening fund was used for shrub plantation along park's edges to encourage interaction among young children. The boundary wall of the park was made permeable to facilitate easy supervision by caregivers. The community was actively involved in providing feedback on the proposed design, ensuring inclusive community engagement in the planning process. This approach effectively tackled the issue of vandalism, as residents developed a sense of ownership.





Issues faced on ground

Strategies adopted

Securing community buy-in to initiate construction.

The local Ward Corporator participated in community engagement efforts to secure community buy-in and support the development of the park.

Sourcing of toddler-friendly equipment in a short period of time.

Recycled tyres and wooden logs were used to create the equipment such as balancing beams, and stepping logs etc.

Impact

The transformation has enabled access to play area for children who were previously deprived of a stimulating play space at a walkable distance, potentially benefiting approximately 3,600 young children residing in the benefit zone. Post implementation, children are accessing the outdoor play space more often and caregivers have reported that their young children are spending more time playing outdoors.

Community involvement in the planning phase of the project enabled caregivers to understand the crucial role of play in ECD. Many caregivers also noted positive lifestyle changes, accepting that the park offered them chances to socialise with other residents, an opportunity they might not have had otherwise. Additionally, they valued that their children could now play with their peers.

The impact of this transformation on the community's lives helped decision-makers understand the importance and potential of such spaces in the city. This has inspired them to further scale multiple young children and caregiver-friendly parks and play spaces across the city.

"I visit this park almost every day with my grandchildren. It has greatly changed our lifestyle. Here, they enjoy playing with friends of their age. While they play, I walk around the park, which helps reduce my knee pain. I also get to spend time with other caregivers in the community, which wouldn't have been possible otherwise."

- Ms. Rama, Caregiver, M. H. Nagar

Finance

The entire project, which was funded by GWMC, costs INR 6.5 lakhs. The plantation work in the park was carried out using the Greening fund.

Sustainability and Scalability

- The project received great acceptance from users after its implementation. A major factor in its success was the early involvement of beneficiaries in the planning process. This engagement fostered a sense of ownership among the residents.
- GWMC is maintaining the park with support from local SHGs, a model being replicated across several other parks in the city.
- Observing the community's reception, GWMC officials recognised the potential of similar underutilised spaces throughout the city and planned similar interventions near other vulnerable settlements.
- Following the completion of this project, the city opted to utilise the Greening fund to finance plantations in parks throughout the city.

ADDITIONAL INTERVENTIONS IN THE CITY – PROJECT BRIEFS

2. Developing natural and sensory play opportunities in a neighbourhood park in Srinagar Colony (Parks and Open Spaces, Inclusive)

To provide an accessible play area in Srinagar Colony, an unused space in front of a community hall was converted into a neighbourhood park, potentially benefiting over 1,700 children residing in the benefit zone. The neighbourhood park offers a range of experiences, including natural and sensory play elements with textured enclosures, a grass mound tunnel, playground equipment, seating areas, and native plant species. These features were implemented as part of the city's greening initiative, with the help of the State's Greening fund. These play features have helped increase children's interaction with nature, promoting healthy development in young children.



3. Transformation of a dump yard into a neighbourhood park in Christian Colony (Parks and Open Spaces, Inclusive, Accessible, Playful)

Christian Colony is a residential neighbourhood primarily inhabited by low-income families. The area lacked recreational spaces. With the nearest park 2 km away, a dump yard located in the centre of the colony, next to a pre-primary school, was transformed into a park. This new park offers inclusive, accessible, and vibrant play opportunities tailored for young children in the vulnerable community, enhancing their outdoor activities. Covering approximately 500 sq. m., the play space was created using recycled materials, multi-height seating areas, and shrub plantation. This transformation has established a formal play space for approximately 2,500 of the most vulnerable children in the area.



Way Forward

- Warangal plans to create more public spaces with play areas near vulnerable settlements and expand these initiatives throughout the city.
- Utilising the Greening fund, the city aims to develop safe and accessible parks with age-appropriate play opportunities for young children, thereby increasing the city's green cover.
- Additionally, the city intends to raise awareness among officials and communities about child-friendly urban development through capacity building and community engagement activities.

(This page is intentionally left blank.)

This section showcases a few Indian and international good practices, centred around addressing the needs of young children and their caregivers in the public realm. These case studies range across various young children and caregiver-frequented destinations, spanning across the solution domains- a) Parks and Open Spaces; b) ECD facilities (Anganwadi Centre, Health Centre); c) Streets.

The case studies highlight key learnings and impacts, while also emphasising processes such as stakeholder engagement, capacity building, partnerships, funding, and maintenance strategies. These are integral for the holistic development of young children and promote positive behavioural changes among caregivers of young children, communities, and city agencies.

Indian projects

No.	Project Name, Location	Area	Type of project
1	Forest Colony Park, Kohima, India	65 sq. m.	Parks and Open Spaces
2	Anganwadi centres with Play and Amenities, Vadodara, India	82 sq. m.	ECD facility (anganwadi centre)
3	Leprosy Pada(colony) Park, Rourkela, India	650 sq. m.	Parks and Open Spaces
4	Pocket park at NMT corridor, Jabalpur, India	120 sq. m.	Parks and Open Spaces
5	Play spaces in anganwadi centres, Kochi, India	140 sq. m.	ECD facility (anganwadi centre)

Why is it relevant for India?	Why is it relevant for ITCs?	Key elements
Community-led reclamation of streetside residual spaces in hilly cities for pocket parks	Door-step play opportunities along streets with safe access in every neighbourhood for children	Sandpit with loose play, children’s library, climbing features, seating area for caregivers, playful slow street
Anganwadi centres play a vital role in providing play and learning opportunities for young children	Outdoor spaces of Anganwadi centres as play spaces for children, with provision of child-heighted amenities	Sand pit, loose play, play equipment, kitchen garden, child-height wash basins, drinking water points
Informal settlements and marginalised communities often lack access to public spaces	Integrated public realm with play spaces for children and for other community activities	Sand pit, mud pit, play equipment, open gym, covered drains, multi heighted shaded seating, floor and wall-based games, engaging art
Emphasis on pedestrian-friendly corridors enhanced with young children-friendly play pockets	It acts as a play space and a pause point for the children and their caregivers using this pedestrianised corridor	Mix of conventional and natural play elements, including wooden balancing beams, sensory wall, musical wall and evergreen plants
Anganwadi centres play a vital role in providing learning and play opportunities for young children	Showcases how Anganwadi centres can become stimulating learning spaces, offering engaging outdoor activities	Abacus railings, permeable and low height walls, child-height basin, toilets and scribble wall and colourful safety grill

No.	Project Name, Location	Area	Type of project
6	Puttani park, Bengaluru, India	300 sq. m.	Parks and Open Spaces
7	Age-specific play opportunities In Civic Centre, Jabalpur, India	250 sq. m.	Parks and Open Spaces
8	Gundu Bavi Park, Warangal, India	600 sq. m.	Parks and Open Spaces
9	Young children-friendly zone at Aranya Nagar, Indore, India	200 sq. m.	ECD facility (anganwadi centre)
10	Neighbourhood-level public space along Machhi Bazaar Anganwadi centre, Indore, India	605 sq. m.	ECD facility (anganwadi centre)
11	Child-friendly immunisation centre and courtyard at Naga Hospital, Kohima, India	420 sq. m.	ECD facility (health centre)
12	Child-friendly Sensory Garden Pune, India	1,100 sq. m.	Parks and Open Spaces
13	St. Mark Road Bengaluru, India	1 linear km	Streets
14	J. M. Road Pune, India	1.9 linear km	Streets

Why is it relevant for India?	Why is it relevant for ITCs?	Key elements
Residual spaces in residential colonies serving as play pockets, can improve access to public spaces	Includes age-appropriate and nature-based play elements more suitable for young children	Sand pits, green mounds with tunnels to crawl, climbing features and seating for caregivers
Provision of age-specific play space in a city-level park	Play modules made of natural materials for young children were added	Wooden play elements, such as bridges, balancing beams, stepping stones, grass mounds, and climbing frames, open gym and multi-level wooden seating
Transforming vacant land around cultural anchors into a public space for young children and their caregivers	Age-specific play opportunities for young children and space for community events and activities were created	Sandpit, grass lawn, interactive wall, scribble wall, wooden slide and toddler-friendly slide, multi-height seating, drinking water facility, and permeable boundary wall
Anganwadi centres play a vital role in providing learning and play opportunities for young children	Age-specific play opportunities made of natural materials were provided	Sandpits with wooden play logs, winding gravel pathways, pebble pit, bird feeder, signage, sensory wall, and multi-height seating spaces
Reclamation of underutilised spaces along ECD facilities through community engagement	Provided outdoor play opportunities for children enrolled in anganwadi centres and socialising space for the community	Sandpit, seesaw, abacus, wall art, nursing booth, multi-height seatings, toilet, and drinking water facility
Transformation of ECD facility into a community space	Showcased how to make healthcare facilities less stressful for young children and their caregivers	Gentle green mounds with a tunnel, monkey bars, rope climbing frame, multi-height seating with planter boxes and ramped corridors
Residual spaces in residential colonies serving as play pockets	Includes sensory play opportunities and age-appropriate play elements suitable for young children	Sandpit, grass lawn, mud pathways, flowering plants, shrubs, age-appropriate play equipment, multi-height seating, toilet, permeable boundary wall
Wider footpaths, introduction of cycle tracks	N/A	More pedestrian and cycle friendly paths, taking in needs of all kinds of users
Introduction of cycle tracks, more public street space	Play areas strategically located between the walking and cycling paths, to ensure safe distance from vehicular traffic	More pedestrian and cycle friendly paths, taking in needs of all kinds of users

No.	Project Name, Location	Area	Type of project
15	Raahagiri Day Delhi, India	N/A	Streets
16	Child-friendly Smart Park Bhubaneswar, India	2,300 sq. m.	Parks and Open Spaces
17	All abilities' park, Visakhapatnam, India	2,156 sq. m.	Parks and Open Spaces
18	Coles park, Gayatri Devi Park, M.N.K. Park, Bengaluru, India	NA	Parks and Open Spaces

International projects

19	Circling the Avenue Hadera, Israel	2,400 sq. m.	Parks and Open Spaces
20	6 De Junio Park Quito, Ecuador	14,000 sq. m.	Parks and Open Spaces
21	Tapis Rouge Carrefour-Feuilles, Haiti	N/A	Parks and Open Spaces
22	Urban Amenities Caracas, Venezuela	N/A	Parks and Open Spaces
23	Parks and kindergarten, Tirana, Albania	NA	Parks and Open Spaces

Why is it relevant for India?	Why is it relevant for ITCs?	Key elements
More pedestrian friendly, encourages car-free zones, multi-use of public space	Alternate use of public roads for children's activities; a safe car-free zone	Car-free zones; alternate use of public roads
Citizen participatory approach and process	Safely fenced and secured; a number of children-specific activities	Safely fenced and secured; a number of children-specific activities
Inclusive park design supporting play for all abilities	Stimulating and innovative play spaces and equipment for children	Tactile flooring for safe and agile movement, inclusive furniture and play design for children of all abilities
Inclusive park design supporting play for all abilities	Empathetic space design aimed at increasing interaction between children of all abilities during their initial years of development, thereby reducing exclusion and segregation in society	Ramped entry and wheelchair pathways for smooth wheelchair movement, sand tunnels and safety additions to regular play equipment and sensory pathways for infants and toddlers
Offers an idea on how to capitalise on under-used road space to add ITC supportive space into a neighbourhood	Safely fenced and secured from vehicular traffic; use of natural elements as children's play equipment	Creative use of median space, ample plantation and shade of trees
Citizen participatory approach and process	Dedicated children's play areas and various sports areas; safely fenced and secured	Neighbourhood park addressing concerns and needs of local citizens
Water collection management in an area with scarcity of water, community space in an informal settlement	Safely fenced or secured; open space available for children in informal settlement	Water collection management in an area with scarcity of water, community space in an informal settlement
Use of set-back area, and an active facade	Secured from motorised road; introduction of various sporting activities; a number of gathering and playing areas	An active facade system; use of different materials for children's play equipment.
Creating a network of green open spaces throughout the city	Policies to make streets safer and converting schools into community centres	Low-cost interventions to rejuvenate parks and kindergartens in the city

FOREST COLONY PARK IN KOHIMA (Parks and Open Spaces)

In the land-starved and hill city of Kohima, where most of the land is owned by the community, carving out spaces in each ward for a park is a big challenge. Amidst the COVID-19 pandemic, the community acknowledged the importance of open spaces near their homes, particularly for young children. Recognising this requirement, Kohima forged partnerships with Ward Panchayats and engaged with the community, enabling successful crowdfunding for a park in Forest Colony. The park, developed within residual spaces around steep street turns, has provided play opportunities for around 200 children in the community and enhanced safer access along the connecting streets.

PROJECT INFO

Location	Kohima, India
Year	2021
Client	Forest Colony Residents
Area	65 sq. m.
Web link	https://youtu.be/JG9v9PnvlIE?si=HTyQxYyd06Hjy5dw



KEY LEARNINGS

Witnessing the impact, Kohima established partnerships with Ward Panchayats and commenced community engagement sessions across every ward to facilitate community involvement in developing one pocket park in each of the 19 wards in the city.



This intervention empowered parents to send their children outdoors and encouraged them to explore outdoor play and interact with peers, and enabled caregivers to socialise.



Slow streets along the park helped the community to develop a safe space along the streets, with safer access to the pocket park.



While the play area sees a high footfall of children, the adjacent streets are transforming into dynamic public space, attracting residents to engage in various recreational activities.



ANGANWADI CENTRES WITH PLAY AND AMENITIES (ECD Facility (anganwadi centre))

To scale up young children- friendly ECD facilities, the city retrofitted five Anganwadi centres to provide outdoor play opportunities and child-height amenities, by leveraging CSR funds from multiple organisations. These AWCs have been provided with outdoor play areas with sandpits and play equipment, kitchen garden and compound walls with interactive and education wall murals for safety. Young children-friendly amenities, such as child-height washbasins and toilets, have also been provided inside the facilities, enabling independent usage by young children. This has resulted in increased enrolment in these AWCs. The city is further scaling up by retrofitting 30 similar AWCs with young child-height amenities.

PROJECT INFO

Location	Vadodara, India
Year	2023
Client	Vadodara Municipal Corporation
Area	115 sq. m.



KEY LEARNINGS

In an effort to improve dilapidated AWCs in the city, Vadodara is leveraging CSR funds from multiple agencies towards upliftment and maintenance works in these centres, improving the quality of experience in these AWCs for young children.



The AWCs in Vadodara, which were once dilapidated, are now thriving, with **renovated play spaces with sand pit for the young children to play in.**



Child-height wash basins and drinking water points have encouraged their independent usage by the children.



Children now participate in gardening with the help of AWWs.



The redevelopment with safe and vibrant play spaces and children-oriented amenities has increased enrolment in the AWCs, as more parents are now keen to send their young children to here rather than to private schools.

LEPROSY PADA (COLONY) PARK (Parks and Open Spaces)

A city-wide mapping highlighted the unequal distribution of play spaces between informal and formal settlements in Rourkela. One such informal settlement was Durgapur Leprosy Colony where the residents continued to face social stigma and isolation despite not having the disease. The city agencies planned a young children and caregiver-friendly public space in the settlement through regular community engagements to understand the needs and use patterns of the community. At first, a tactical intervention was made to create a formal play space with age-appropriate play opportunities and seating spaces for caregivers. Following this implementation, the space attracted children from neighbouring areas for play, as well as medical camps, and multiple SHG meetings. This encouraged the city agencies to make further enhancements, such as closing open drains, installing seating, and setting up an outdoor gym, leveraging convergence of various State and city-level programmes. The transformed public space is now thriving with children and people from surrounding communities who now visit the colony more frequently for play and other community activities. This has also fostered a sense of dignity among the residents who now feel they are a part of a larger community and that physical and social boundaries have blurred.



PROJECT INFO

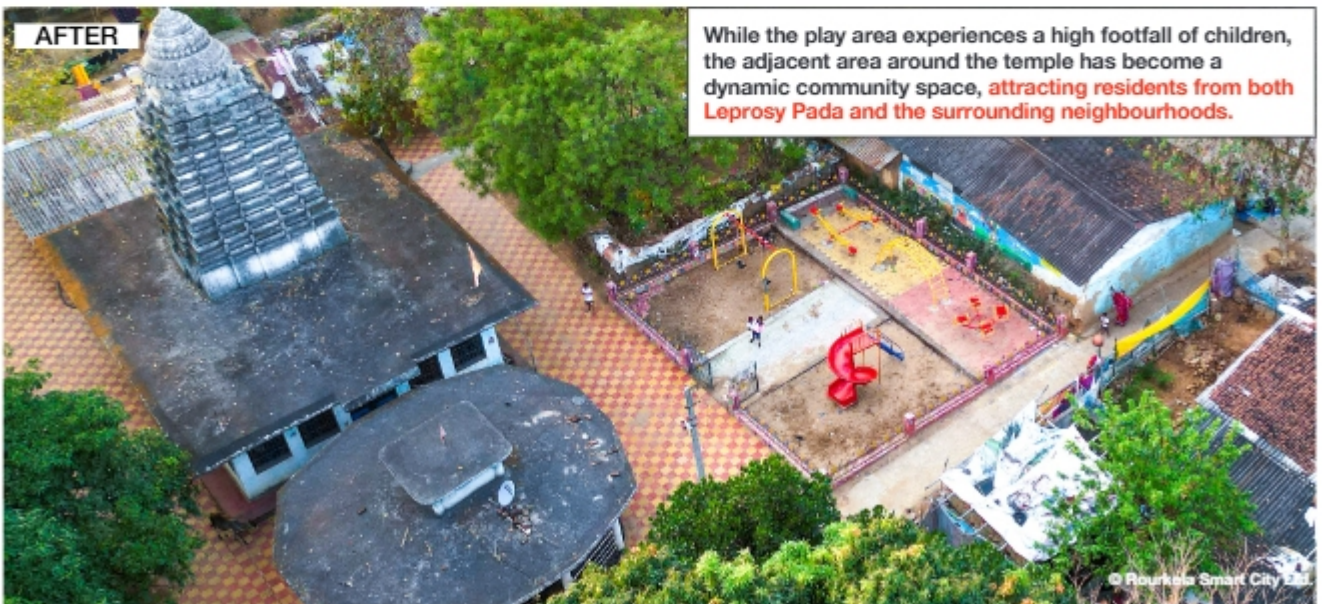
Location	Rourkela, India
Year	2023
Client	Rourkela Municipal Corporation (RMC), Rourkela Smart City Ltd. (RSCL)
Area	650 sq. m.
Weblink	https://smartnet.niua.org/placemaking-marathon/#/p/Rourkela/0

KEY LEARNINGS

The spatial mapping process facilitated the plan to scale similar interventions in 138 vulnerable settlements under the JAGA mission in Rourkela, promoting greater inclusion of young children and caregivers in future development initiatives.



The mapping showcased an unequal distribution of parks in these vulnerable settlements vis-a-vis the affluent colonies in Rourkela.



POCKET PARK AT NMT CORRIDOR (Parks and Open Spaces)

NMT corridor is a pedestrianised stretch that encourages walking and cycling and acts as a public space for the low-income neighbourhood nearby. However, the stretch lacked dedicated spaces for young children. Jabalpur developed a vibrant pocket park of around 120 sq. m. along the corridor, with play elements such as wooden balancing beams, sensory walls, shaded seating. This has provided a play space for the low-income neighbourhood, acting as a pause point for young children and caregivers travelling along the corridor.

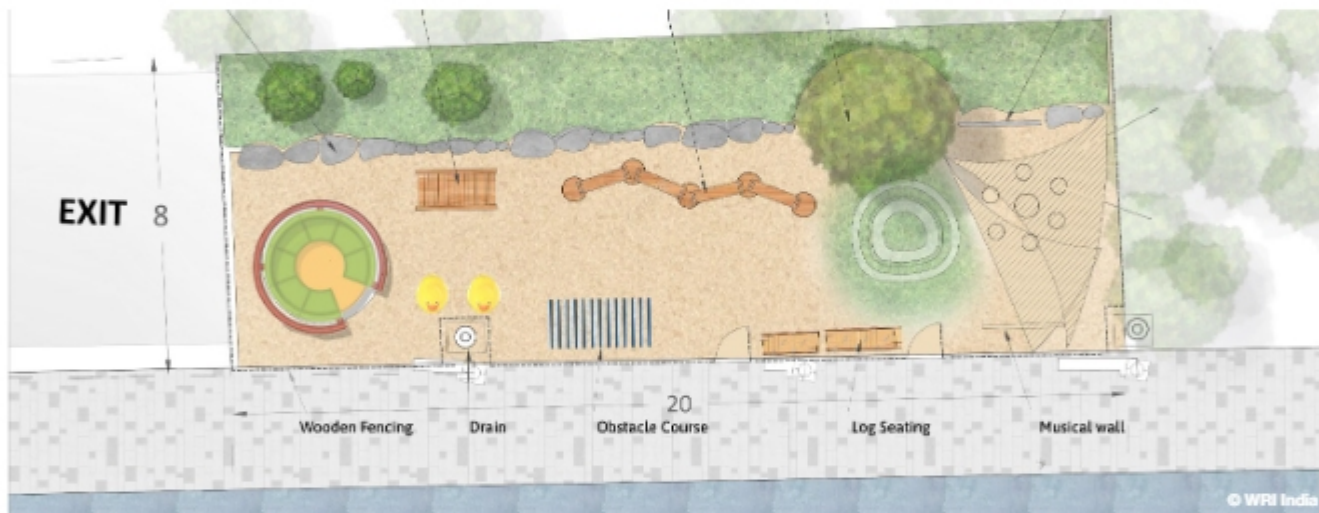
PROJECT INFO



Location	Jabalpur, India
Year	2022
Client	Jabalpur Smart City Ltd.
Area	120 sq. m.
Weblink	https://twitter.com/mp_index/status/1706227705539354896 https://www.youtube.com/watch?v=lgyzAuFZEGw

KEY LEARNINGS

Integrating a vibrant pocket park with play elements into a pedestrianised NMT corridor not only addresses the needs of a low-income neighbourhood by providing dedicated play spaces for young children but also enhances the corridor's role as a welcoming and functional public space.



A low-height fence was designed to ensure safety and visibility. The multi-height seating was made from recycled wood, and sound-based play and wooden balancing beam were installed to provide varied play opportunities for young children.



© Jabalpur Smart City Development Ltd



© Jabalpur Smart City Development Ltd



© Jabalpur Smart City Development Ltd

PLAY SPACES IN ANGANWADI CENTRES (ECD Facility (anganwadi centre))

Young children in Fort Kochi lack play opportunities easily accessible i.e. within walking distance. Kochi consulted with AWWs and caregivers in low-income neighbourhoods to provide play 'aangans' (play courtyards) in AWCs. Setback spaces and terraces in AWC premises were transformed using the BaLA concept, interactive play opportunities, basic amenities for young children, and waiting space for caregivers. This led to the AWCs becoming a key public space in the neighbourhood. The city agency intends to scale similar play interventions in 29 AWCs of west Kochi.



PROJECT INFO

Location	Fort Kochi, India
Year	2023
Client	Kochi Municipal Corporation, Cochin Smart Mission Ltd.
Area	140 sq. m.
Weblink	https://www.linkedin.com/feed/update/urn:li:activity:7120370483287523328/

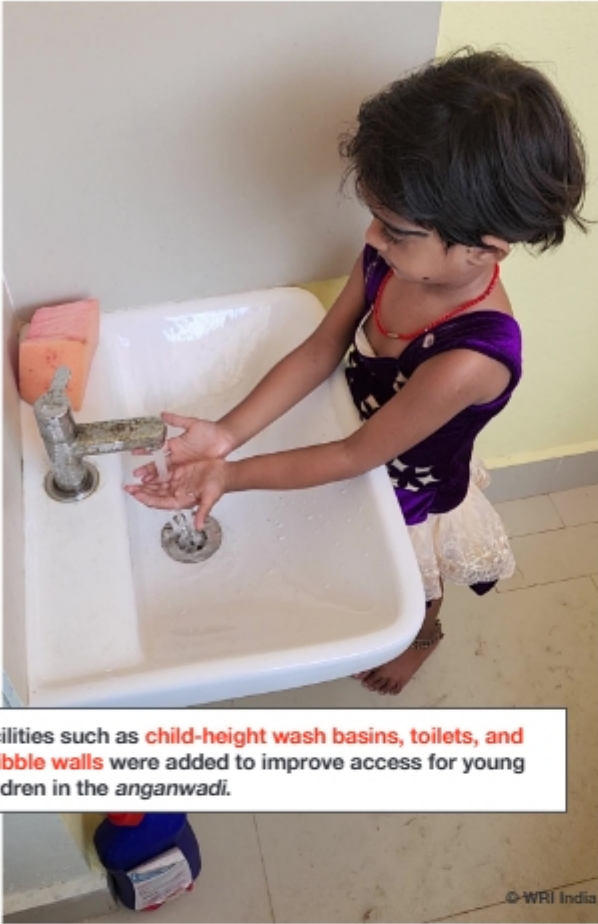
KEY LEARNINGS

The city agency identified play as a valuable tool for enhancing learning opportunities in ECD facilities, such as Anganwadi centres. This approach is also helping to transform these spaces into potential community anchors.



Shaded play areas were carefully designed to be free from all hazards, ensuring a secure environment for children to engage in unrestricted and independent play.

Abacus railings were incorporated to seamlessly combine play with learning experiences. Additionally, **permeable and low-height verandah walls** were added to enable a clear view of the outdoor play area within the anganwadi.



Facilities such as **child-height wash basins, toilets, and scribble walls** were added to improve access for young children in the *anganwadi*.



Colourful safety grills were added to the boundary wall, providing security and creating a more welcoming atmosphere. The **high entry gate** serves the dual purpose of **preventing vandalism and anti-social activities** while ensuring permeability of the compound wall.

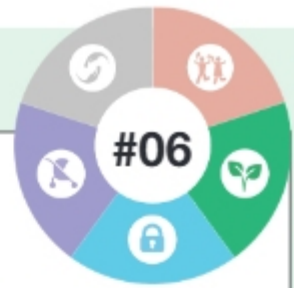


PUTTANI PARK (Parks and Open Spaces)

In the densely populated government housing colony of Shantinagar, the absence of formal play spaces left children with little choice but to play on streets. To address this, a tactical intervention created a play area within an unused space between buildings, attracting many children and caregivers. Following insights from this trial, KSRTC allocated a dedicated space to create a permanent pocket park, featuring stimulating play spaces with nature-based elements, such as grass mounds with tunnels and a sandpit providing diverse play opportunities for young children. This development has enabled caregivers to spend more time outdoors with their children, enhancing both safety and a sense of community.

PROJECT INFO

Location	Bengaluru, India
Year	2023
Client	Directorate of Urban Land Transport, Govt. of Karnataka
Area	300 sq. m.
Weblink	https://www.linkedin.com/posts/wri-india_bngalore-puttani-park-activity-7096725453897375745-AIYc/



KEY LEARNINGS

Providing doorstep play opportunities dismantles barriers to accessible and high-quality early childhood experiences. Such spaces foster outdoor interaction among caregivers and children, nurturing a community of shared experiences and belonging.



A previously unused 300 sq. m. space in the residential area was transformed into a play and interactive zone for young children and caregivers. This transformation encourages caregivers to spend increased outdoor time with their children, promoting a stronger sense of community belonging.

© WRI India



© WRI India



A stimulating play space included **nature-based play elements** for young children including grass mounds with a tunnel to crawl through and a sandpit. This park offers play opportunities for different age groups, including spaces for caregivers to interact with their children and other caregivers.



© WRI India



© WRI India

AGE-SPECIFIC PLAY OPPORTUNITIES IN CIVIC CENTRE PARK (Parks and Open Spaces)

The Civic Centre is a prominent city-level park located in the heart of Jabalpur, surrounded by commercial buildings and attracting a significant number of young children, their caregivers, and other visitors. The city's use of innovative play structures made from natural material marks a shift away from conventional play equipment, such as swings, slides, and see-saws. The city has introduced age-appropriate play options in this bustling park, featuring wooden play elements such as bridges, balancing beams, stepping stones, grass mounds, and climbing frames. Additionally, an open gym and multi-level wooden seating have been provided near the play area to engage the caregivers of young children.



PROJECT INFO

Location	Jabalpur, India
Year	2023
Client	Jabalpur Municipal Corporation, Jabalpur Smart City
Area	250 sq. m.

KEY LEARNINGS

Introduction of wooden play structures has successfully attracted younger children and their families. The city agency is replicating the wooden play module across other parks and play space projects.



Conceptualised as a **pause space for young families** after a long shopping day, this newly **added play area offers age-appropriate play opportunities** that pique children's curiosity and make them eager to visit the park more frequently.

© WRI India



GUNDU BAVI PARK (Parks and Open Spaces)

In the neighbourhood of Kareemabad in Warangal, a temple premise with a high footfall of women and children had an underutilised area. The city saw the potential to transform this space into a community area.

This previously vacant area was transformed into a vibrant public space with the addition of shaded seating, age-appropriate play areas, a walking track, shrub plantation, and other amenities. This initiative not only encouraged children and caregivers to spend quality leisure time together but also promoted morning and evening strolls. Recognising the value of this space, the temple authorities have now taken on the responsibility of its upkeep.

PROJECT INFO

Location	Warangal, India
Year	2022
Client	Greater Warangal Municipal Corporation
Area	600 sq. m.



KEY LEARNINGS

Post-intervention, the temple authorities used to lock the main gate of the park to protect the space that was created and would only open it during prayer times. This limited the access to benefit users i.e. the young children and caregivers of the community. A community engagement event anchored by the local corporator demonstrated the benefits of play and the importance of providing safe/accessible play areas for young children.





YOUNG CHILDREN-FRIENDLY ZONE AT ARANYA NAGAR (ECD Facility (anganwadi centre))

A dilapidated anganwadi centre, a pre-primary school, and the surrounding open space were transformed into a young family-friendly zone in Aranya Nagar, Sector 3. The interventions include the addition of sandpits with wooden play logs, winding gravel pathways, pebble pit, bird feeder, signage, sensory wall, and multi-height seating spaces. ISCDL collaborated with DWCD and the school staff to engage regularly with the AWC staff and residents during the process of implementation. This transformation led to a rise in attendance at the AWC due to its playful environment and enhanced interactions between caregivers because of the comfortable waiting area.

PROJECT INFO

Location	Indore, India
Year	2023
Client	Indore Municipal Corporation, Indore Smart City Development Ltd.
Area	200 sq. m.



KEY LEARNINGS

Empowering female residents was crucial for the project's success. The city collaborated with IMC frontline workers to run sensitisation campaigns on maintaining cleanliness around the public space and held regular engagement sessions with residents. Women community leaders played a key role in mobilising the residents to take ownership of the space.



ISCDL, in collaboration with representatives from the Indore School of Social Work, **organised a workshop for female caregivers of the community to inspire and empower them to take the initiative and contribute to transforming the area.**



Interactive engagement sessions with caregivers to understand their issues and needs to incorporate in the design proposal.





NEIGHBOURHOOD-LEVEL PUBLIC SPACE ALONG MACHHI BAZAAR ANGANWADI CENTRE (ECD Facility (anganwadi centre))

A dilapidated anganwadi centre and its surrounding ground, which was plagued by unauthorised parking, waterlogging, and litter, were transformed into a family-friendly zone in Machhi Bazaar. The city agencies first conducted a tactical trial, which included site cleaning, site demarcation with chain fence to ensure safety, structural renovation, installation of age-appropriate play equipment, and provision of nursing booth, multi-height seatings, toilet, and drinking water facility. Community and AWWs were engaged by the city agencies via regular stakeholder consultations and awareness campaigns to foster a sense of belonging to the space.

Post-implementation, regular civic engagement led to the space being used appropriately. Littering decreased, a sense of ownership emerged, and the community took responsibility for maintenance. Residents began organising social events in this space by themselves, and both older and younger children started playing together.

KEY LEARNINGS

Regular engagements with residents and involving them in awareness campaigns were crucial for securing community support. Additionally, designing areas that are both enjoyable and educational, emphasising "play, learn, and grow," was instrumental in transforming this AWC into community spaces for the neighbourhood.

The backyard of the AWC was formerly a dumping ground for household and construction waste, consistently emitting unpleasant odours. The front yard faced encroachment issues of parking and disorganised vending, hindering its intended use as a public space.



PROJECT INFO

Location	Indore, India
Year	2021
Client	Indore Municipal Corporation, Indore Smart City Development Ltd.
Area	605 sq. m.



The rundown structure was renovated with the addition of sandpit, seesaw, abacus, educational wall art and potted plants. Toilets and drinking water facilities were installed, a nursing pod was set up, and lights were added. Colourful sarees were used to provide shading, and a multi-height seating arrangement was added to ensure convenience for the caregivers while waiting.



The surrounding area was cleared to create a play space for the children attending the AWC. Fallen trees were recycled to provide seating and play elements, while a sandpit was added. Local children participated in painting a mural on the wall.



CHILD-FRIENDLY IMMUNISATION CENTRE AND COURTYARD AT NAGA HOSPITAL (ECD Facility (health centre))

Naga Hospital, the largest government hospital in Kohima, is frequented by families from across the city and surrounding regions. However it lacked adequate and comfortable waiting areas, accessible design, and cleanliness, making it unsafe and uncomfortable for visitors. The city added waiting areas, play opportunities, and amenities in children-oriented areas of the city hospital. Shaded multi-height seating with planter boxes were installed around the perimeter, creating a secure space for young children. Play features include gentle green mounds with a tunnel, monkey bars, and rope climbing frame. Interconnecting corridors were upgraded with ramps for barrier-free stretcher movement, ensuring accessibility for all. These interventions offer a much-needed relief open space along the children's ward, reducing the stressful experiences of hospitalised or visiting children. In addition, the hospital staff has mandated a two-hour outdoor playtime in the courtyard for children in the pediatric ward.



PROJECT INFO

Location	Kohima, India
Year	2024
Client	Naga Hospital Authority Kohima
Area	420 sq. m.
Weblink	https://easternmirrornagaland.com/on-international-play-day-nhak-gets-play-courtyard/

KEY LEARNINGS

Mobilising the Naga Hospital Nursing and Management Staff through multiple sensitisation sessions led to positive behaviours among courtyard users. They no longer litter, wash, or dry clothes in the open and are actively involved in maintaining the courtyard space.

After the development of the courtyard space, visitors and attendants **have ceased dumping waste and are contributing to maintaining cleanliness on the premises. Caregivers are now spending increased time outdoors with their toddlers, actively participating in play within the courtyard area.**





CHILD-FRIENDLY SENSORY GARDEN (Parks and Open Spaces)

The transformation of an underused space in a dense housing colony, addressed park inaccessibility, encroachment along access roads, and waste disposal issues. This limited the park's usability and reduced its value as a community space, particularly for young children and their caregivers. A Rapid Behavioural Assessment (RBA) with the residents found that the lack of child-friendly infrastructure and poor connectivity deterred families from visiting the parks in this neighbourhood.

The interventions ranged from creating naturally shaded areas, adding a dedicated sensory play area, and retrofitting the existing infrastructure to ensure safety through upgradation of light poles and compound walls. The site was further enhanced by improving pedestrian pathways, adding public amenities and multiple access points, ensuring smoother connectivity for all residents. The newly improved park addressed the needs of young children and caregivers, enhancing its space utilisation while raising awareness amongst caregivers about the importance of sensory development in early childhood.



PROJECT INFO

Location	Pune, India
Year	2022
Designer	Egis India Consulting Engineers Pvt. Ltd.
Client	Pune Municipal Corporation
Area	1,100 sq. m.
Cost	(INR) – 0.094 billion

KEY LEARNINGS

Engaging local stakeholders early on and the success of the tactical trial helped secure community support and highlighted the importance of child-friendly spaces. Additionally, the project's acceptance by the community led the municipal agency to adopt sensory elements, such as age-appropriate play elements, shrub plantation, and sensory trails, scaling them to other parks, the primary health centre and the hospital within the same neighbourhood.



The park, once a dumping ground for nearby buildings, now offers a vibrant space where mothers can watch their children play from their kitchen windows. This transformation has created a safe, ideal neighbourhood park, fostering a sense of security for caregivers.



© Pune Municipal Corporation, Egis India

Caregivers relax in comfortable benches overlooking the play areas. The park provides a safe, engaging space where children and caregivers spend over an hour in sensory activities. The park offers young children a safe environment to explore their senses-tasting, smelling, touching plants, and playing on mud, sand, and grass-promoting essential sensory development.



© Pune Municipal Corporation, Egis India



© Pune Municipal Corporation, Egis India

ST. MARKS ROAD (Streets, Mobility)

The reconstruction of this one-way street addressed several major challenges, including inadequate design and planning, poor maintenance standards and inefficient utility management. The project sees through implementation of the interventions, benefitting public agencies and the citizens alike. The project took a comprehensive, multidimensional approach which promotes upfront investment in quality materials and construction to increase durability. The street now has extended and enhanced sidewalks, one-way protected cycletrack, consistent travel lanes and dedicated parking bays. The extended sidewalks are beneficial to ITCs, who need more space. Landscaped strips between motorised and non-motorised paths as well as addition of pits and guards to trees further help enhancement and protection.

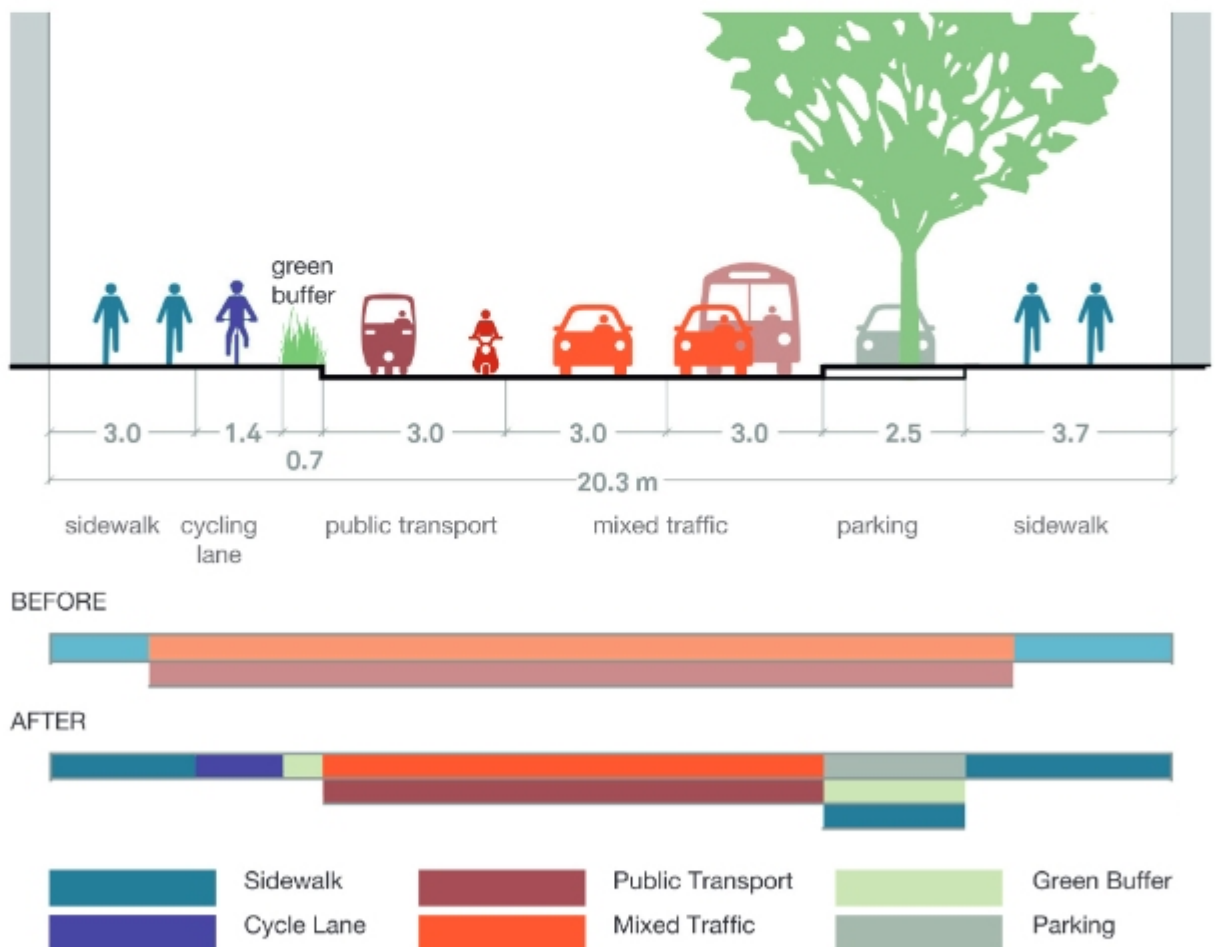


PROJECT INFO

Location	Bengaluru, India
Designer	Jana USP
Area	1 linear km
Cost	(INR) – 1.15 billion
Web link	https://globaldesigningcities.org/publication/global-street-design-guide/streets/neighborhood-streets/neighborhood-main-streets/case-study-st-marks-rd-Bengaluru-india/

KEY LEARNINGS

Extending side walks and addressing the number and the design of crossing points has resulted in more people using the street. Pedestrians have increased by 250%, the waiting time at crossings has been reduced from 5 minutes to 2 minutes and the pedestrian crossing time is reduced to 12 seconds.



© Global Street Design Guide, NACTO © Global Street Design Guide, NACTO



A platform around an old tree makes for a comfortable and shaded informal seating area, providing **continuous borders** that can be used as resting points for ITCs.



Bollards, **protective elements from traffic**, at street ends prevent motorised vehicles from misusing the footpath and indicate to small children that this is a crossing point.



Street planting acts as a buffer between the motorised and the non-motorised path. This prevents small children from accidentally running out onto the street.

JM ROAD (Streets, Mobility)

In the wake of increasing levels of traffic and pollution in Pune, and due to appalling driving habits and flawed road designs, the Pune Municipal Corporation undertook this project prioritising pedestrians and cyclists. The agency proposed to build a high quality footpath on JM Road, taking into account needs of all street users. It involves streamlining the haphazard parking, and reclaim space for the people, enabling a wider footpath and cycle track. The new design thus includes a continuous footpath, a separate cycle track and organised street parking. The design also integrates bus stops, street vendors and other street furniture on the street, locating them carefully such that they do not hinder the walking paths of pedestrians.



PROJECT INFO

Location	Pune, India
Designer	Oasis Designs Inc. + SG Architects
Area	~ 1.9 linear km
Cost	(INR) – 8 Cr
Web link	https://www.itdp.org/category/location/india/pune/

KEY LEARNINGS

Rearranging the street profile frees up more space for pedestrians. The streets have become more suitable for ITCs because of wider pavements, play areas in the pavement area, protective planting between vehicles and pedestrians and more informal seating opportunities.





Pergola acts as a **shading element** on the walking path, making the journey for ITCs more pleasant. This can also be used as a resting point in the shade.



Seating spaces along the walking path create resting points for ITCs. The seats also act as a buffer between the cycling lane and footpath, thus making the footpaths safer to use for toddlers.

A dedicated cycling lane helps encourage more people to cycle. Small children, just learning to cycle can also use this lane without getting in the way of traffic.



Play areas for children between the walking and cycling path make the footpath more inclusive and child-friendly.

RAAHGIRI DAY, TEMPORARY STREET CLOSING (Streets, Temporal Urban Activities, Mobility)

Raahgiri Day is India's first sustained car-free citizen initiative that was developed to address the mobility and safety concerns for pedestrians and cyclists, by seeking the provision of continuous and well-maintained footpaths and other non-motorised transport specific infrastructure. Through this movement, EMBARQ India along with other NGOs seeks to make Indian roads more inclusive, and to correct the fundamental imbalance in India's urban planning priorities. Dedicated stretches of roads are blocked to motorised traffic and only allow pedestrians and cyclists for 4-5 hours every Sunday. Street closures are repeated at regular times and locations to establish use patterns.



PROJECT INFO

Location	Gurugram, Delhi, India
Area	1 km
Cost	1,000 USD (operation and branding)
Web link	http://www.raahgiridays.com/

KEY LEARNINGS

Citizen groups can approach EMBARQ for advice and to seek help to organise temporary street closures. Temporary street closures free up space for play and other activities on a temporary basis. They encourage social interaction between caregivers, as they meet each other at the event. A temporary street closure may also lead to a permanent street closure.



Image showing motorised traffic and activity on the road on a typical working day.



People actively participating in various activities along the car-free road on Raahgiri Day.



At temporary street closure events, small children can safely practice sports activities that need more space.

© www.pps.org/places/raahgiri-day



The road surface becomes a big canvas for small children to draw on.

© WRI India



It is common practice to organise different events on temporary street closure days, such as this yoga event for all age groups.

© WRI India

CHILD-FRIENDLY SMART PARK (Parks and Open Spaces)

Under the Area-based Development module of the Bhubaneswar Smart City Strategy, the redesign of three underutilised parks was taken up to introduce child friendly spaces in the city. The parks are incorporated with specific infrastructure and recreational facilities in accordance to the ITCs. A participatory planning approach was adopted while redesigning and multiple concept design options were prepared. These parks include spaces like an amphitheatre, spaces for community gardening, mural and graffiti walls which further act as exhibition walls. The parks are universally inclusive and accessible for all. There are dedicated multi activity zones for all age groups as well as technological features for safety, security and connectivity. With the redesign of these parks, the city has seen an increase in footfall to these areas.




PROJECT INFO

Location	Bhubaneswar, India
Area	Saheed Nagar Park - 6,880 sq. m. Omc Park - 2,300 sq. m. Triangular Park - 575 sq. m.
Cost	(INR) – 1.80 Cr
Web link	https://www.smartcitybhubaneswar.gov.in/smart-park-redevelopment

KEY LEARNINGS

Community participation was fostered by a day-long art event where citizens were invited to execute the art-works in the Saheed Nagar park.



Lighting along the pathway aides park users to also use the park in the night time. The **low lights** illuminate the pavement area to prevent small children from stumbling.

Various workout equipments in the open gymnasium can be used by the caregivers while the children are at the play area.

Pathways are distinguished in the park with the help of specific **ground materials** and covers.

Bright and colourful **art** murals of familiar objects and colours relate to small children.

Shrubs are planted along the pathway allowing small children to interact with **nature**.

©Planet Odisha

The park is **fenced** from all sides to protect the users and particularly children from vehicular traffic outside.



Trees through the park provide **shade** and resting places for users in the day.



The watch tower, especially used by children, offers great views of the surrounding areas of the park.



Local citizens were a major part of the planning and executive process of the redesigning of the park. Mural painting of 12 walls was taken up by local children and adults alike.

ALL ABILITIES PARK (Parks and Open Spaces)

Vizag Smart City developed 'All Abilities Park' with an intent to enhance the social and green infrastructure of the city and provide children across all abilities, a safe and constructive environment to play. Spread along the shoreline of Vizag, this 2,156 sq. m. expanse of green area caters to users who have varied abilities including but not limited to visual, hearing, physical and psychological impairments.

The sense of taste and smell are heightened by the presence of fruit-bearing and flower-bearing trees, herbs and sandpit. Mosaic murals on the walls, textured floor pattern, wind socks and green mounds are a treat to the eyes of the visitors. Signage, walls and furniture are covered in braille for the visually impaired and play equipment with sound effects are installed to engage the interest of young children.

KEY LEARNINGS

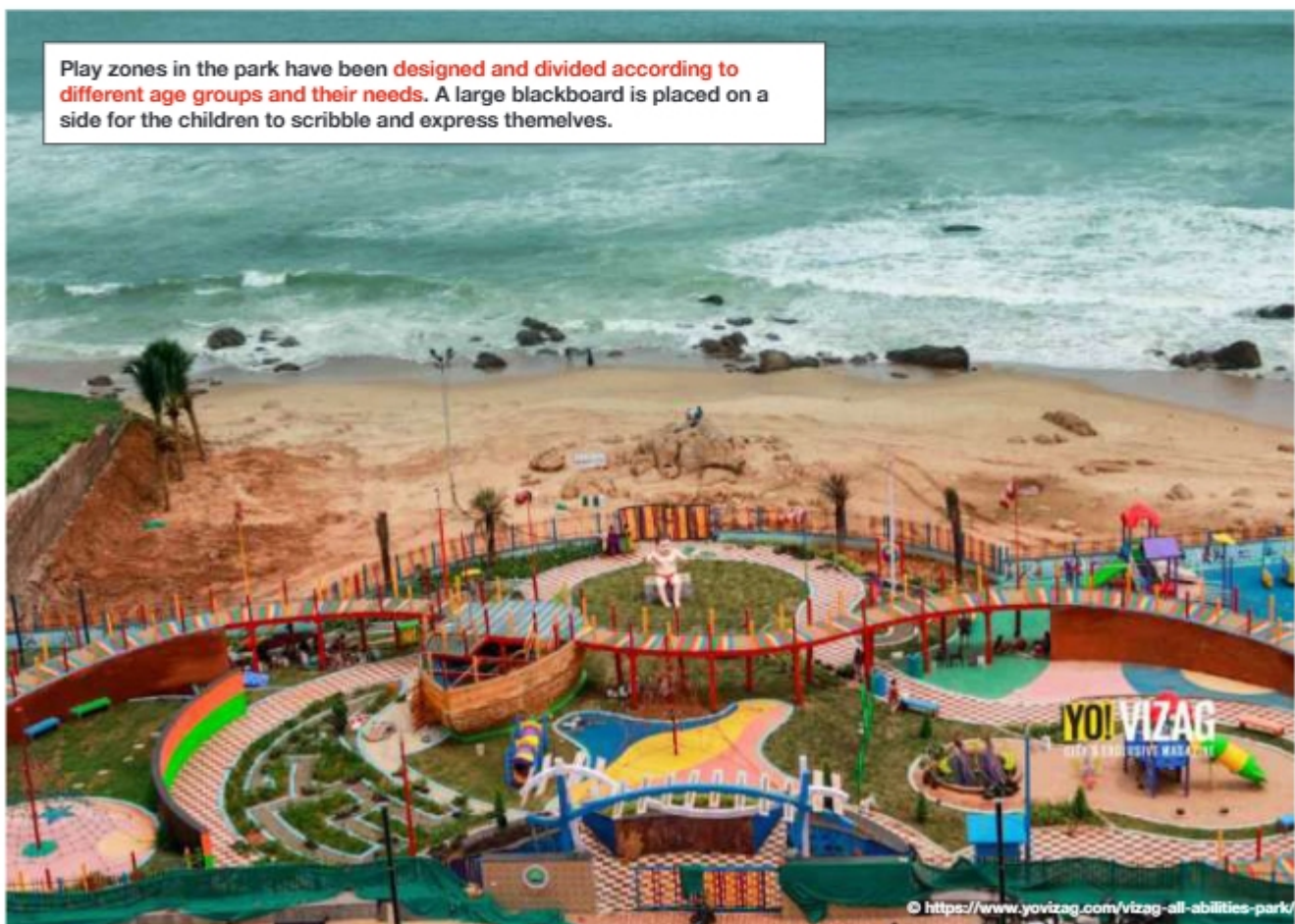
All Abilities Park is an exemplary space design which is inclusive, inviting to public, allows interaction, encourages community engagement and enhances the sensory experience of the visitors. The park design provides for universal design and advocates zero segregation of the abled and the differently abled users.

PROJECT INFO

Location **Greater Vishakhapatnam, India**
Year **2018**
Client **Greater Vishakhapatnam Smart City Corporation Ltd.**

Web link

http://smartcities.gov.in/upload/presentation/58b41075daf40All_Abilities_Children_Park_Concept_FEB_22.pdf



Play zones in the park have been **designed and divided according to different age groups and their needs**. A large blackboard is placed on a side for the children to scribble and express themselves.

© <https://www.yovizag.com/vizag-all-abilities-park/>

Most of the park's **play equipment is made from rubber**, which not only makes it safe but also takes care of rusting and damage. The **rubber flooring in the play zones** ensures safety for children while playing. The **tactile flooring in the park** is designed to help in easy navigation of the visually impaired.



It is **designed for free movement of a wheelchair user** to all ends of the park. The bridge presents an excellent view of the serene coastline of Vizag.

© http://smarcities.gov.in/upload/presentation/58b41075daf40All_Abilities_Children_Park_Concept_FEB_22.pdf



© http://smarcities.gov.in/upload/presentation/58b41075daf40All_Abilities_Children_Park_Concept_FEB_22.pdf

COLES PARK, GAYATRI DEVI PARK, M.N.K. RAO PARK (Parks and Open Spaces)

Kilikili, a collaborative led by parents of differently abled children of Bengaluru, aims to design inclusive play areas within existing municipal parks. Across the city, three play areas within municipal parks, namely, Coles Park, Gayatri Devi Park and M.N.K. Rao Park were modified to ensure children with varied abilities are able to play together. Amongst this, Coles Park is acclaimed to be India's first inclusive child-friendly municipal park. Existing play equipment and physical landscape design were modified to accommodate the exploratory, sensory, gross-motor and imaginative play needs of children with all abilities, particularly, infants and toddlers.

First, participatory design consultations were held with children, their caregivers and medical professionals to understand key requirements of an inclusive play space. Next, local architects worked pro-bono to bring these design ideas into reality. A few examples of simple design interventions to ensure inclusion and ease of use for young children include ramps, wider pathways to facilitate movement for wheelchairs and strollers, infant and toddler-friendly swings, modified flat steps for slides, wheelchair accessible sandpit and a sensory stimulation track.

KEY LEARNINGS

Kilikili's design interventions are an example of collaboration of parents' groups, local architect, local play equipment manufacturer, city planning professionals and city municipality. The inclusive play elements at the park encourages young children living in local neighbourhoods to interact with each other and socialise with the community at large.

PROJECT INFO

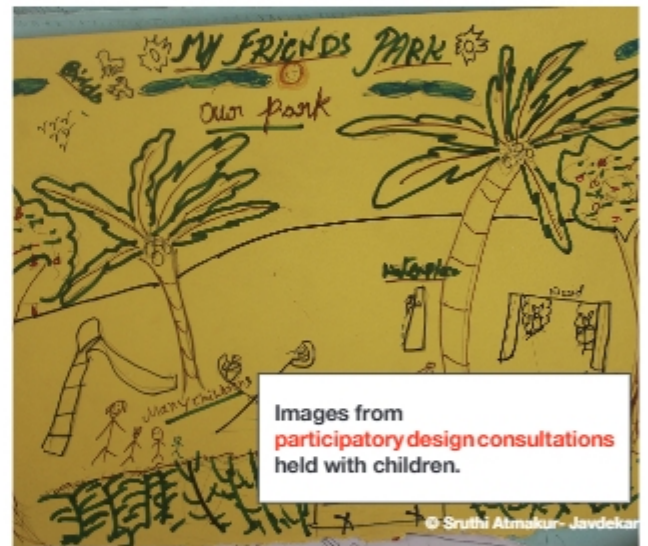
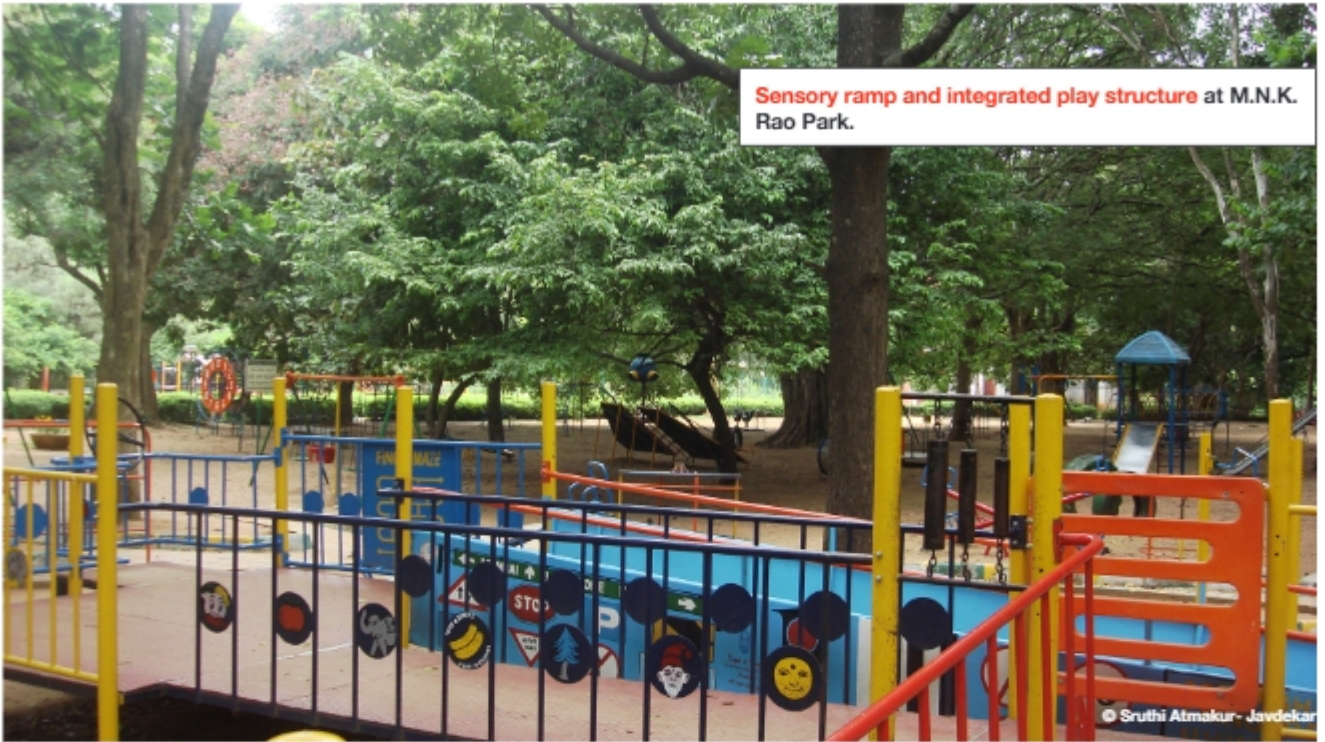
Location **Bengaluru, India**
Year **2006**
Designers **Kilikili**
Client **Bengaluru Mahanagara Palike**

Web link
https://www.kilikili.org/pdf/KILIKILI_coles_park_booklet.pdf



Infant and toddler-friendly swings at Gayatri Devi park. These swings are meant for both young children and older children with different abilities.

© Sruthi Almakur - Javdekar



CIRCLING THE AVENUE (Parks and Open Spaces)

This project revitalises Hadera's city boulevards which have lost their glory through the years. This is an example of how a street, dominated by vehicular traffic, as many Indian streets are, can be transformed to accommodate a playground by using the median.

The median was redesigned as a long playground and resting area. Smart playing solutions combined with playful resting equipment and natural ground surface materials create a natural-looking park. Fences around the edges of the median give protection from the surrounding traffic. Natural elements like tree trunks are also placed along the park to be used as playing objects and stimulate children's imagination.

KEY LEARNINGS

A median or wide pavement area within an existing street profile can be transformed into a playspace or a park for ITCs. Safety from traffic is a key issue in such a case, which has been solved here by placing fencing all along the edges of the play area. Retaining existing trees create much-needed shade for ITCs in the hot climate and bring children into contact with nature.



Trees are planted on either sides of the park, also shading the paths along the linear park.

Several yellow seating elements double up as **playful furniture** for children to stretch in, walk over or play through.

Benches at frequent intervals help carers to be nearer to the children while they are playing, and encourages gathering.

© Yoav Peled



PROJECT INFO

Location	Hadera, Israel
Year	2017
Design team	BO. Landscape Architects
Client	Hadera Municipality Project
Area	2,400 sq. m.
Web link	https://en.bo-landscape.co.il/gardens-and-parks/



The wooden benches at one end of the park act as an interface between the park on one end and a community cafe terrace on the other.

While one of the paths is stepped, the other one is gradually inclined, thus enabling accessibility to all kinds of users.

Walking paths and play areas are designated with the help of different materials and ground cover.

© Yoav Peled



Trees are also planted in the middle strip of the park, further shading and adding more natural elements in the children's play area.

Tree logs and stumps are introduced and placed through the park, encouraging the child user to use it as per his/her/ their imagination.

© Yoav Peled

6 DE JUNIO PARK (Parks and Open Spaces)

This park is located in a neighbourhood of 16,000 residents. As in many Indian neighbourhoods, safety is a concern in Ecuador. The design was developed in an intensive participatory process by the community. Workshops were organised with residents to establish the safety problems to be addressed and the needs of the community. This resulted in a wide range of facilities for users of varying ages and interests. The identified objective was to offer a public space for all residents which is safe, free of violence and healthy. The importance of safety in the project led to simple but effective solutions: fences only where needed, good lighting throughout which extends the use of the park into the night and protective measures against traffic. In addition to that, good sanitation facilities offered in the park ensure that residents have access to clean drinking water and toilet facilities.

PROJECT INFO

Location	Quito, Ecuador
Year	2018
Designer	EPMMOP
Client	Global communities
Area	14,000 sq. m.
Cost	960,000 USD

Web link

<https://www.archdaily.com/906837/parque-6-de-junio-safe-public-space-epmmop>



KEY LEARNINGS

Allowing residents to participate in the design process empowers them. Through a collaborative process, residents can indicate exactly what their needs are and which problems are to be addressed. In Quito this has resulted in a safe park for all age groups, including small children and their caregivers.

Low planting ensure overviews across the whole park.

A wide range of outdoor facilities extends the use.

Utilities such as clean water and sanitation are present in the park and receive daily maintenance.

Lower fences are around play areas.



© Juan Andrés Salas



Bollards provide **protection from traffic**.

Seating elements double up as informal barrier.

© Juan Andrés Salas

Quality and even **lighting** extends use into the night.



© Juan Andrés Salas

The play area includes **natural play elements** with different **natural groundcover materials** such as sand, gravel and mulch.



© Juan Andrés Salas

TAPIS ROUGE (Parks and Open Spaces, Urban Services)

The Tapis Rouge site is located in the Carrefour-Feuilles site, which is characterised by extreme poverty, poor vehicle and pedestrian circulation and limited access to electricity. This neighbourhood faces similar problems as many other informal settlements in India. The public space, designed on a former tented site, serves to heal the wounds of a society which is facing consecutive and severe problems. The design was developed collaboratively with the community, and resulted in specific requirements, such as the outdoor gym. The climate adaptation measures considered in the design are noteworthy and applicable to the Indian context. The central circular space and the canopies used, function as water collectors. A pump extracts the collected water, which is stored underground. The money from selling the water is used for the maintenance of the square.

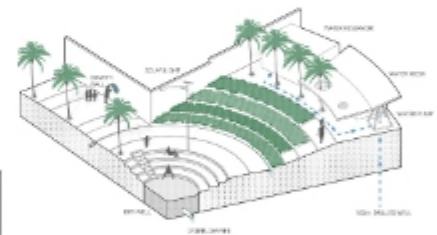


PROJECT INFO

Location	Port-au-Prince, Haiti
Year	2016
Designer	EVA Studio
Client	Global communities
Area	14,000 sq. m.
Cost	250,000 USD
Web link	http://www.evastudio.co.uk/tapis-rouge/

KEY LEARNINGS

An example of a playground, developed with community participation, in an informal settlement. The design shows how water collection measures are combined with it. This project shows how funds can be raised for maintenance such as funds raised by selling water to residents (who have no access to potable water) are used for maintenance of the square.



The playground is fenced off, so that it can be closed at night. **Fences** also protect children from accidentally stepping off a height difference to the east of the playground.

Water is collected in the playground. **Rainwater** is directed to the central sunken area. Collected rainwater is stored in a watertank under the central area and sold to residents, who do not have access to running water in their homes.

Terraces **planted** with green double up as continuous **low benches**.

© Etienne Pernet du Breuil



Three big **lights** spread around the playground ensure that it is safe and can also be used after dark.

© Etienne Pernot du Breuil



Public art, depicting local scenes, enlivens the space and adds colour.

© Gianluca Stefani

Besides planted terraces, trees dotted around the play area will provide **shade** in the future.



Outdoor workout **equipment** was proposed by the residents. Caregivers thus can also be active while supervising the small children playing on the square.

Benches can double up as play objects. The edges are sloped so that small children can slide off them, or climb onto the benches.

© Gianluca Stefani

URBAN AMENITIES (Parks and Open Spaces)

This project from Venezuela showcases a linear playground, created in an area where social housing was developed. The playground sits in the set-back area between the buildings and the road. For the Indian context, this is an example of how the setback area, commonly found in Indian cities, can be enlivened and used for the neighbourhood. The design was selected by the community after a design competition and thus has some participation. The materials used are locally produced and simple: concrete and steel, but implemented with a strong design aesthetic. The use of these materials makes a robust play area. The design focuses not only on sports, but also spaces for everyday use by all age user groups and brings children into contact with different sports from an early age. It is an inspiring example of a playground built by the local community, using local materials and smart ideas.

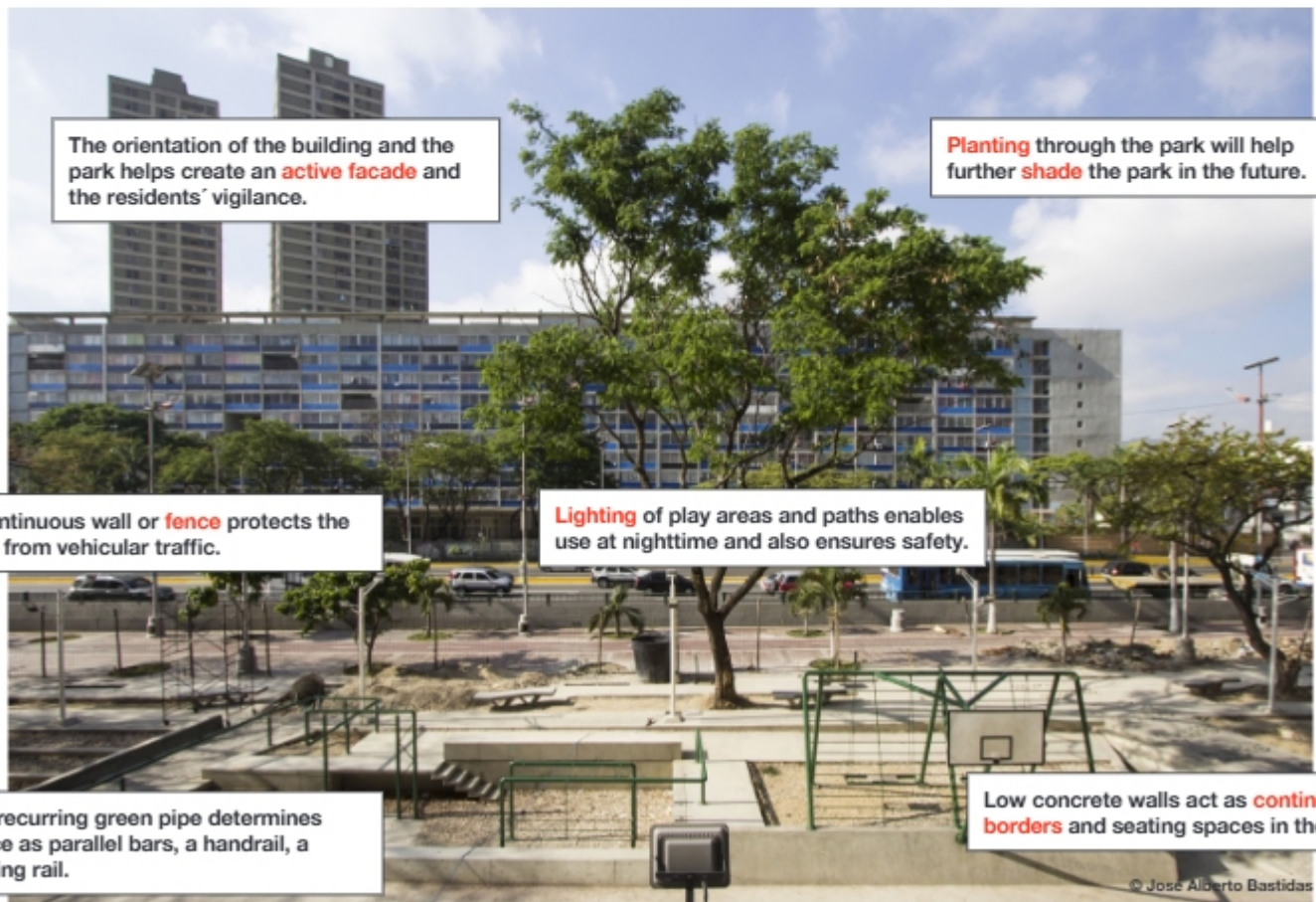


PROJECT INFO

Location	Caracas, Venezuela
Year	2015
Designer	Ricardo Sanz Sosa + Rodrigo Marín Briceño
Client	Caracas Municipality
Web link	https://www.archdaily.com/906506/urban-amenities-sports-lot-ricardo-sanz-sosa-and-rodigo-marin-briceno

KEY LEARNINGS

An example of a playground, developed with community participation, in an informal settlement. The design shows how water collection measures are combined with it. This project shows how funds can be raised for maintenance such as funds raised by selling water to residents (who have no access to potable water) are used for maintenance of the square.





Ramps leading to various levels enables accessibility to all kinds of users.

Delicate steps, slopes and planters solve the connection between the street and the park.

© José Alberto Bastidas



Concrete ping-pong tables are aimed at surviving the high impact of public use and also as sculpture pieces.

A **continuous border** ensuring safety from vehicular traffic on the street.

© José Alberto Bastidas



A platform doubles up as a covered shed and also acts as a **seating area** for the park users.

A **ramp** to the platform ensures accessibility to all users for all spaces.

© Marituz Volcán

PARKS AND KINDERGARTENS (Parks and Open Spaces)

The Tirana city administration introduced child-friendly policies centred around several renovations of kindergartens, parks, playgrounds and nurseries. The 'Play Tirana' initiative is a prominent breakthrough cutting across decades of haphazard and unchecked city development. The initiative focuses on city development as 'reconstructed' in the interest of its youngest citizens. For this, the city provided plans and technical support to ensure full compliance with standards and regulations for ITCs. The Grand Park - Tirana's well-known green space was renovated to include the addition of a large playground equipped with ITC-friendly amenities. Further, old playgrounds around the city were repaired and informal parking lots were converted into small green pocket playgrounds for children.

PROJECT INFO

Location **Tirana, Albania**
Year **2015**
Client **Municipality of Tirana**
Web link
<https://bernardvanleer.org/articles/reconstructing-a-city-in-the-interests-of-its-children-tirana-albania-2015-2019/>



KEY LEARNINGS

An example of incorporating a new approach to neighbourhood and city planning to design for the most vulnerable groups of the society. This case study shows the use of media to strategise public convenings, form political partnerships and keep the citizens updated of the agency's efforts to improve the quality of life of infants, toddlers and caregivers of Tirana.



Use of natural elements like rocks and sandpits to ensure low-profile playgrounds and park designs. Thus, offering positive experiences for young children and caregivers through passive antivandalism measures.

The park is convenient, well equipped, integrated with the landscape, and popular in the neighborhood.

© City of Tirana, Startek
Constructions, Visit-Tirana.com



Programmatic Interventions in Informal Settlements

According to Census of India 2011, approximately 65.5 million people reside in urban slums, of which 12.3% constitute children in the age group of 0-6 years.¹ About 90 % of the children living in slums do not have access to the services under the ICDS scheme.²

Designing public spaces inclusive of marginalised sections of the society is often an overlooked aspect of public space planning. Narrow lanes and alleys, scrapyards, and leftover spaces under the flyovers and subways, when designed properly, could become play havens for children residing in low-income neighbourhoods.

The case summaries on interventions for ITCs in informal neighbourhoods presented in this section is a compilation of various typology of projects that can be implemented in a low-income neighbourhood. The processes and components that facilitate the successful utility of such spaces by the residents are also included. Further, child-led participatory practices that have contributed to successful engagement with the community belonging to low-income neighbourhoods are addressed as well.

No.	Project Name, Location	Organisation	Type of project
1	Community Childcare Centre, Mumbai, India	Apnalaya	Childcare Services
2	Educational Spaces, Delhi, India	Social Design Collaborative	Social Infrastructure (school)
3	Bareilly Compound Space for Children and Women, Mumbai, India	URBZ	Community Space
4	Mother and Child Park, Nizamuddin Basti Delhi, India	Aga Khan Trust for Culture	Parks and Open Spaces
5	Daycare Facilities by Mobile Crèches, Delhi, India	Mobile Crèches	Childcare Services

Reference:

¹ NIUA. (2018). Chapter 2: Demography; 2.4.1 Population of children in slums. In NIUA (2018) "Status of Children in Urban India, Baseline Study, 2018 (Second Edition)" Delhi, India. (SECOND, pp. 13). National Institute of Urban Affairs.

² NIUA. (2018). Chapter 2: Demography. In NIUA (2018) "Status of Children in Urban India, Baseline Study, 2018 (Second Edition)" Delhi, India. (SECOND, pp. 5). essay, National Institute of Urban Affairs.

Why is this case study unique in the Indian context?	Key elements
Empowering marginalised women in low-income communities to become child-care workers	Capacity building
Use of temporary and affordable materials for construction of educational spaces so that they can be easily dismantled at the time of evictions	Community participation, robust materials for construction
Build relief space for women and their children in a safe and healthy environment	Community participation
Under-utilised spaces in the community were converted into play areas for children. Also, a separate gathering space was designed for the comfort and safety of women.	Community participation, private gathering space for women and children
Provision of accessible childcare services to the children of migrant construction labourers promoting early childhood care and development for the underprivileged	Capacity building, community mobilisation

#1 Community Childcare Centres (CCC) by Apnalaya

(Childcare Services, Participation, Inclusion)

Location: Shivaji Nagar, M-East Ward, Chembur, Mumbai, India



© <https://apnalayallifeontheedges.wordpress.com/2019/10/10/women-entrepreneurs-play-larger-community-role/>

Project objective

Community Childcare Centre by Apnalaya provides affordable and safe childcare facilities to marginalised communities of M-East Ward of Mumbai. It is a unique social business model that promotes entrepreneurship for women of this neighbourhood. The organisation strategises to develop a community-led model for providing a nurturing communal safe space that is essential for the overall development of infants and toddlers and empowers women from low-income communities to earn their livelihood.

Key highlights

The programme includes:

- Supporting women to identify an appropriate space for a childcare centre;
- Providing ECD training for women confined to their homes due to cultural or familial obligation.

The training module comprises topics including parent-child interaction, child-monitoring activities, discussions related to child protection policies, developing low-cost learning materials, play-based activities for children, and information on child nutrition. Start-up kits, such as mats, toys, and other learning materials, are made available to women to help set up their own childcare centre in their homes. CCC is monitored on a monthly basis for the first six months, followed by quarterly monitoring up till the next one-and-a-half years. Apnalaya also takes regular feedback from parents and reviews records and other documents of CCC.

A cap on the number of children enrolled in CCC (which must not be more than 10 to maintain the basic child-caretaker ratio) has been placed to keep a regular check on hygiene standards in the premises.

Implementing agency and stakeholders involved

SHGs, community health workers, Accredited Social Health Activists (ASHA workers), and Mumbai Mobile Creche workers helped by leveraging their social network and connections to kickstart the programme. They assisted Apnalaya to conduct capacity building in ECD for the women/staff members of the childcare centre. With the help of local women volunteers, the organisation keeps an updated record of women who are interested in providing childcare services within their home premises.

Success enablers

Apnalaya organised various capacity building programmes to educate aspiring women entrepreneurs about different business models. The programme offers an easy, market-based solution to earn money for women entrepreneurs of the community, who were previously incapable of supporting themselves financially.

Challenges

During the inception of the programme, it was important for the organisation to ensure smooth handholding of the first-time women entrepreneurs. There was also a risk of the CCC women entrepreneurs to constantly relying on the organisation for monetary needs instead of running the programme as a business setup. Multiple house visits were conducted to identify potential premises for childcare centres, based on factors such as non-proximity to sewage drains, absence of commercial work such as carpentry and electrical at homes, and availability of ground floor of the house for childcare centre premises.

Additionally, while the programme was monitored and evaluated, a significant reduction in the number of operational CCCs was observed over a period as women entrepreneurs aspired to offer their services as child caregivers outside their neighbourhoods after gaining significant experience at the local level. A subsequent unavailability of start-up funds to provide daily meals to enrolled children resulted in the closure of many CCCs. An issue with the income sharing model amongst multiple partners of a particular CCC was also noted.

Finance

The organisation provided funds to CCC women to provide meals to enrolled children for an initial period of 1-2 years. In 2018, a start-up grant of INR 8,000 and other start-up accessories were sanctioned to every CCC woman entrepreneur after a successful run of 3 months. Participants were encouraged to take on contractual works, such as embroidery, for additional income. The programme also received substantial private and CSR funds.

Impact

The programme made reliable CCC services available at the local level. This, in turn, increased the rate of working women in the community due to reliable childcare close to their home. Late night childcare services were offered to working women for a higher fee. The women entrepreneurs were able to earn a reasonable income through the "work from home" model. The rate of school dropouts of older siblings, especially adolescent girls, were greatly reduced, and a reduction in child abuse cases was also recorded.

Many women entrepreneurs came to offer pro bono services to give back to the community. The neighbourhood witnessed an increase in women volunteers in civic action groups to facilitate improvements in public amenities and facilities within their community. In the post pandemic period, around 50 CCCs are currently in operation, run by 100 women entrepreneurs supporting 100 young children and enabling over 182 female caregivers to seek employment opportunities.

#2 Modskool by Social Design Collaborative

(Social Infrastructure - school, Participation, Inclusion)

Location: Yamuna Khadar, Delhi, Kulesra, Greater Noida, India



Project objective

ModSkool by Social Design Collaborative (SDC) aimed to construct an affordable, easy to maintain, deployable, fire-resistant, and safe educational space for the children of the frequently evicted farming communities of Yamuna in Delhi.

Process

Several community consultations were held for the school design over a period of one year. The next step was to raise funds and conduct a final review with the community. For the construction of the school, SDC used temporary, affordable, and vernacular materials, such as bamboo, reused wood, and dried grass in Yamuna Khadar and traditional charpoi cot weaving in Greater Noida to build pivoted doors and windows. This provided cross-ventilation during the harsh Delhi summers. The steel frame enabled the structure to be easily dismantled and rebuilt in case of heavy river floods or forced evictions by the government.

The school had to be dismantled within a year due to land ownership issues and was rebuilt on a new site.

Implementing agency and stakeholders involved

Local champions assisted in mobilisation of the community. A structural engineer was onboarded to design the structural steel frame of the school. Architectural students, social workers, Van School staff, and parents from the village along with 50 volunteers helped build ModSkool in less than three weeks.

Phase 2 of the project is currently facing delay due to uncertainty around the legality of the construction and government approval. FGDs were conducted in their homes, keeping in mind the

comfort of young children and women participants.

Success enablers

Adoption of both indigenous (charpoi cot weaving) and contemporary building practices helped motivate the community to take ownership of the project. Identification of local champions helped facilitate group discussions to understand the needs of the community. Women of the community were also consulted to encourage inclusivity in the design process. It was important to develop a strong social network of NGOs for easy navigation of the region's social geography. Additionally, it also presented an opportunity for mutual learnings by working along with the community.

Challenges

During project inception, there was complete ambiguity around land tenure and legality of the project, given the repeated evictions of the farming community. Therefore, it was important to build a structure that could be easily dismantled, as needed. It was also important to identify local leaders and champions who could drive the project to its completion. The lack of skilled labour for construction was a concern.

As the organisation progressed to project implementation, there was a general concern about the demolition of the structure by the government in case the structure failed to meet the brief of being "temporary". It was challenging to provide for basic needs, including water and electricity due to the isolated location of the site.

Finance

An amount of approximately USD 7,000 was raised via private funding to complete the construction of ModSkool.

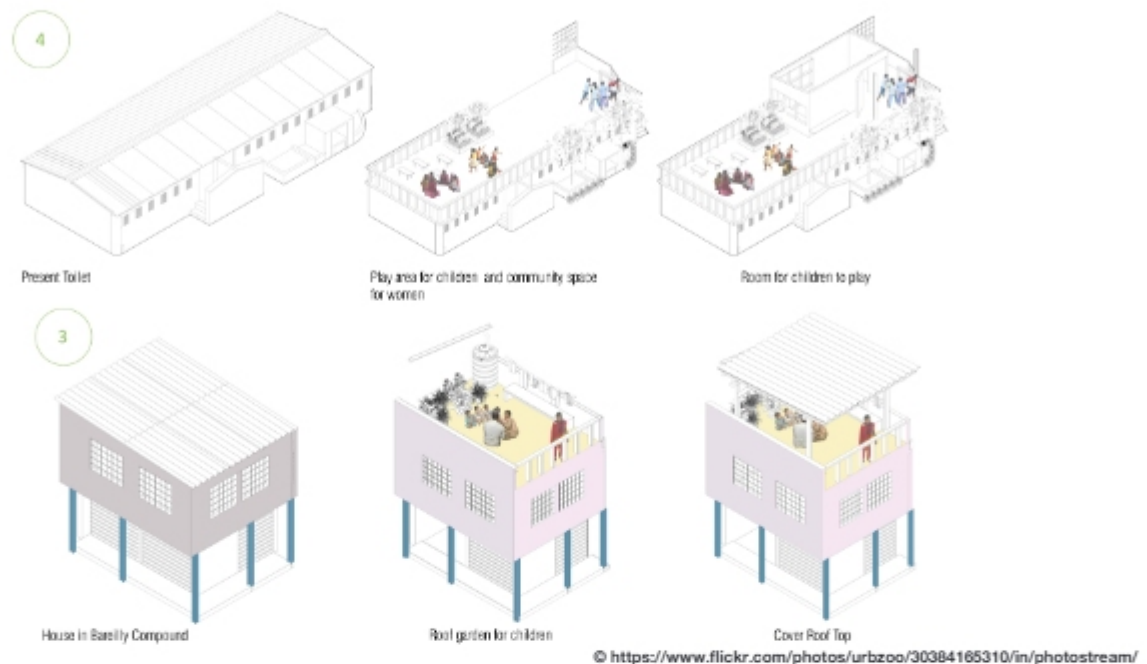
Impact

Access to education and hygiene improved for around 200 young children belonging to marginalised communities.

#3 Bareilly compound space for children and women by URBZ

(Community Space, Participation, Inclusion)

Location: Bareilly Street, Dharavi, Mumbai, India



Project objective

Bareilly compound space for children and women by URBZ is a proposal to construct a gathering space for women that can also function as a community kitchen or day-care centre for children in the extremely dense and overcrowded settlement of Dharavi. The aim of the project is to develop women-centric and child-friendly spaces as opposed to the existing male dominated public spaces in the neighbourhood. It reimagines the potential of community toilets to function as a multi-utility space for women and children.

Process

At project inception stage, exclusive workshops with children were conducted to understand their aspirations and perceptions about their play space i.e. a narrow neighbourhood alley. To ensure people's participation, design options, street exhibitions, and draft models of the proposed buildings were shared regularly with community members, especially with women and children. After multiple rounds of consultations, community toilets were identified as the ideal location for developing community space for women and children. The absence of open space on ground resulted in exploring the roof of the toilet as a potential site for developing the community space. They could be easily scaled across all neighbourhoods as they are service-based, common facilities shared by all community members.

Phase 1 of the project aimed at the refurbishment of the public toilets in the neighbourhood followed by phase 2 where a makeshift structure enclosing the communal space was proposed on the rooftops of public toilets.

Implementing agency and stakeholders involved

URBZ was aided by the local corporators and other key community members to mobilise the community and connect with high-level municipal authorities. Every fortnight, meetings with women

in the community were organised to explain the project intent and receive feedback. Residents were involved in documentation of the existing toilets, specially to record its usage pattern by the public.

Success enablers

URBZ was able to identify a loophole in the building bye-laws that grant a special permit for the construction of toilets in notified slums on the grounds of poor hygiene conditions. The space design was devised, based on the requirements of the user group rather than by adopting the usual pre-conceived notions of community space design.

Challenges

At the project inception stage, combined group sessions with all members of the community could not be organised due to their cultural differences. In addition, there was unavailability of gathering spaces for women to encourage an open dialogue for inclusive participation.

During project implementation, the lack of approval from local municipal authorities led to an inaccessibility of funds. Stringent policies and building bye-laws were inhibitors to construction. An exemption on building public toilets in the notified settlements was disregarded. The city government authorities were reluctant to take the responsibility of a social project.

#4 Mother and Child Park by Aga Khan Trust for Culture (AKTC)

(Parks and Open Spaces, Participation, Inclusion)

Location: Nizamuddin Basti, Delhi, India



© Development-of-DDA-Parks-In-Hazrat-Nizamuddin-Basti-By-Aga-Khan-Trust-For-Culture.pdf (nizamuddinrenewal.org)

Project objective

The women and children residing in Nizamuddin Basti and its female pilgrim tourists were in dire need of a safe and clean open space. This project by Aga Khan Trust for Culture (AKTC) attempted to fill this gap in the neighbourhood amenities. The aim was to create an independent, secure, semi-open gathering space for women and a safe play space for school children of the community.

Process

The parks in Nizamuddin Basti were either habituated by drug pedlars and rag-pickers or used as parking space and waste dumping grounds by the residents. An extensive stakeholder consultation with the community helped transform these spaces for specific uses, such as children's play area, screened park for exclusive use of women, adjacent to a social anchor - the local school community park or the Central Park and multi-utility space for youth activities. Aga Khan Development Network redesigned and developed these 10 underutilised and poorly maintained open spaces and parks into women, children and youth-friendly spaces.

In one of the parks, the parking lot and dumping grounds were converted into a central green space with planters to provide shade. The park is divided into two halves. The area of the park close to the school is installed with play equipment for school children for use during school hours and for public use in the evening. The second half of the park called Pardah Bagh, also known as Mother and Child Park, serves as a refuge space for women who live in the congested neighbourhood of Nizamuddin Basti. The high boundary wall of Pardah Bagh ensures complete privacy to its users. The local women from the neighbouring community are responsible for the management and maintenance of this park.

Community volunteers monitor the park activities twice a day. Monthly meetings are conducted at the community level to discuss park-related issues and complaints.

Implementing agency and stakeholders involved

The park is owned by Delhi Development Authority. The Aga Khan Trust for Culture along with agencies such as the Municipal Corporation of Delhi, the Aga Khan Foundation, the Archeological Survey of India and the Central Public Works Department entered into a public-private agreement for the renovation of park.

Challenges

Before the intervention by AKTC, the area was a hub of several anti-social activities such as garbage dumping, substance abuse and underage drinking. Post project implementation, it has been challenging to monitor the parks after hours to avoid misuse of area by local miscreants. Littering of park by men at night is another concern.

Impact

An increased use of the park for recreational purposes by children and women of the conservative community was observed even during late hours due to absence of men in the park. It began a revolutionary movement to convert all redundant neighbourhood spaces into "green lungs" of the Basti. The Children's Park is used by school children during school hours and is open to children of the Basti in the evenings, rendering its maximum usage by the community.

#5 Daycare facilities by Mobile Creches (MC)

(Childcare Services, Participation, Inclusion)

Location: Construction sites across Delhi, Mumbai, Pune, India



Project objective

Daycare facilities by Mobile Creches (MC) aims at providing accessible and affordable onsite childcare services, education, healthcare and nutrition to the young children of migrant labourers. This has enabled the organisation to promote a safe and healthy environment for children and their caregivers at the construction sites.

Process

To begin with, the organisation marks sites with ongoing construction activity, which may have a minimum of 25 children in need of day care. This is followed by a meeting with the builders or concerned authorities from the company to identify parties interested in providing daycare facilities on-site. MC aids in setting up daycare facilities at the construction sites of the interested builders for a period of the agreed timeline of project completion.

The programme has five main components:

- Supporting the operation and maintenance of the daycare centres at construction sites
- Building staff capacities, including those of parents and teachers
- Forming partnerships with builders and local NGOs
- Transferring crèche ownership to the construction companies after initial support and handholding
- Creating awareness about child rights

ITC facilities, such as nursery for lap-babies, nutritious meals, vaccination against diseases, clean drinking water, play equipment, and preschool education, are made available to the children of construction workers at daycare centres.

Implementing agency and stakeholders involved

The organisation collaborates with parents, developers, local NGOs, and government agencies to implement and fund the daycare services. MC connects with the concerned NGOs and construction firms interested to build and finance day-care facilities on construction sites, while providing initial trainings to the facilitators and monitoring the quality of services delivered. In many places, construction companies take complete responsibility of maintenance and management of crèches, with regular guidance and support from MC.

Challenges

The main challenge was to accommodate young children from multilingual geographical stations under one roof and providing a congenial environment for their growth during their primitive years of development.

Impact

MC formed partnership with parents, labour unions, construction firms, NGOs, and government agencies to promote and protect child rights, especially from the marginalised community. It also made provisions for training female labourers from construction sites as MC caregivers.

This section summarises a few of the Indian and international examples which, through a combination of various elements, contribute towards the making of a child-friendly city. Every project has been provided with a short description of the project and its value concerning child friendliness along with the relevant ITCN objective it addresses.

Indian projects

1. City-level Sensory Park at 95cm, Rourkela, India
2. Subash Nagar Colony Park, Warangal, India
3. Anganwadi centre at Balasamudram, Warangal, India
4. Toddler play area at Gandhi Nagar Park, Kakinada, India
5. All Ages Park, Saraswati Garden, Jabalpur, India
6. Nehru Park, Fort Kochi, India
7. Rajendra Maidaan, Kochi, India
8. Footpath improvement at Scheme 78 Roads, Indore, India
9. Crèche at MS Building and KPSC Building, Bengaluru, India
10. Improving access to an Anganwadi centre, Agartala, India
11. Improving access to lakefront, Coimbatore, India
12. Reclaiming space for accessing ECD services, Erode, India
13. Exposure to traditional herbs by revitalising abandoned park, Ranchi, India
14. Young children-friendly Anganwadi centre Udaipur, India
15. Open street for play on Sundays, Rohtak, India
16. Manav Sadhna, Ahmedabad, India
17. Reclaiming pedestrian space on streets, Coimbatore, India
18. Project Chaak, New Delhi, India
19. Matunga Flyover, Mumbai, India
20. Balsena and Tarun Sena Programmes, Bhavnagar, India
21. Palle Prakruti Vanam, Telangana, India
22. Love Your Parks, Mumbai, India
23. Reclaiming street space from private parking at Vikas Marg, Delhi, India
24. BaLA (Building as Learning Aid), Gujarat, India

International projects

25. Pedestrian Safety Programme, Sao Paulo, Brazil
26. Solanda Housing Project, Quito, Equador
27. Fortaleza Cares: Prioritising safer access to Albert Sabin Children's Hospital, Fortaleza, Brazil
28. Designing safer streets for children, South Korea
29. Fuji Montessori Kindergarten, Fuji, Japan
30. Cantinho Do Ceu Complex Urbanisation, Sau Paulo, Brazil
31. Bicentennial Children's Park, Santiago, Chile

#1 CITY-LEVEL SENSORY PARK AT 95CM, ROURKELA, INDIA (Parks and Open Spaces, Playful, Inclusive)



To develop the city's identity as a young children-friendly city, Rourkela developed a city-level sensory park near a key entry point to the city, along one of the major streets. The site, located near informal settlements, was previously an abandoned space with a pond. To create a positive landmark, the city reclaimed 9,160 sq. m. of space to develop a park with natural and sensory play elements, such as sandpits, grass mounds, sculptures, loose play tyres, sound installations, sensory walkways and seating. Access to the park was improved, along with an entry gate opened up for the informal settlements. The city-level park has provided a play space for young children across the city, especially those from the vulnerable population living along the site.

<https://www.youtube.com/watch?v=SMJTzC6P8yU>

#2 SUBHASH NAGAR COLONY PARK, WARANGAL, INDIA (Parks and Open Spaces, Green, Playful)



An underused 2,800 sq. m. water tank area in the Subhash Nagar neighbourhood has been transformed into a pocket park for young children using AMRUT grants and the GWMC Greening fund. Debris from the site was repurposed to create gentle green mounds for children to play on. The park now features an age-appropriate play area for toddlers, an open lawn, flowerbeds, recycled tyre and wooden play equipment, sound-based play equipment, wooden seating, a walking track, and toilet facilities for caregivers.

© Greater Warangal Municipal Corporation

#3 ANGANWADI CENTRE AT BALASAMUDRAM, WARANGAL, INDIA (ECD Facility (anganwadi centre), Accessible)



The Anganwadi centre is located in a busy area, in proximity to a vulnerable settlement, and faced issues of waterlogging. The city improved access to the facility by covering open drains and implementing speed calming measures. Inside the AWC, 320 sq. m. of toddler-friendly play spaces were enhanced, including shaded seating and assembly area. Murals, plantation, and play opportunities on the street were also added. This emphasised the importance of the AWC as a community public space. Following the intervention, the AWC saw an increase in enrolment and the children's attendance too improved.

#4 TODDLER PLAY AREA AT GANDHI NAGAR PARK, KAKINADA, INDIA (Parks and Open Spaces, Playful)



This park, located in a residential neighbourhood is one of the few public spaces with high footfall from all age groups. However, it lacked an age-specific play area for young children. The city created a dedicated play area of around 314 sq. m. for young children, with age-specific play opportunities. This has provided outdoor play opportunities for young children in the neighbourhood and increased their time spent outdoors.



#5 ALL AGES PARK, SARASWATI GARDEN, JABALPUR, INDIA (Parks and Open Spaces, Playful, Inclusive)



The existing neighbourhood park, located in a residential area, lacked a toddler-friendly play area and seating spaces for caregivers. The city retrofitted around 1800 sqm of the park area for all ages with play elements, walkway, shaded cluster seating, gym equipment, and a multi-functional space for community activities. This has transformed the park to an inclusive space for all and enabled young children and caregivers to spend time outdoors together.

<https://www.youtube.com/watch?v=SMJtzC6P4yU>

#6 NEHRU PARK, FORT KOCHI, INDIA (Parks and Open Spaces, Playful)



This city-level park previously lacked age-appropriate play opportunities and accessible play spaces and had dilapidated play equipment, hard fall surfaces, non-functional public amenities, and water-logging issues. The city revitalised the space by adding low-height play equipment, such as a tunnel mound and play mound with a slide, installing soft impact surfaces around play equipment and at-grade play spaces, improving lighting, waste disposal, and adding caregiver amenities for women and children. Naturally shaded seating for children and their caregivers was also added. These enhancements have increased the footfall of children and caregivers and ensured safety around play spaces, thereby promoting independent play for children.

#7 RAJENDRA MAIDAAN, KOCHI, INDIA (Parks and Open Spaces, Playful)



Although this waterfront area in Kochi had the potential to be a city-level recreation space, it was only occasionally used for hosting public events and remained largely inaccessible. The city revitalised the space by incorporating age-appropriate play features, including gentle play mounds for crawling infants and a play mound with a slide. Additionally, toilet facilities for women and children were installed along with a nursing booth and comfortable seating for caregivers, along with increased green cover. Following this transformation, the area has become a well-used and accessible open space in the city, popular for morning walks and family recreation, and providing young children with opportunities to engage with nature.

#8 FOOTPATH IMPROVEMENT AT SCHEME 78 ROADS, INDORE, INDIA (Streets, Mobility, Accessible)



The footpath along a commercial corridor in a newly developing area, which connects several cultural anchors and attracts many pedestrians, was improved. The city agency developed a continuous 1-km stretch with pedestrian infrastructure, including a footpath, shaded cluster seatings, green mounds, interactive sculptures, signage, shrub plantation, and lighting. Accessibility was enhanced with ramps and at-grade crossings. The area is now a monitored no-parking zone to ensure pedestrian safety.



The impact has been significant as elderly residents and wheelchair users now find it easier to navigate, joggers and families use the space more, and women find it safe as it is well-lit. Thus, the dedicated walking space and play zones have boosted social gatherings, making the area vibrant and family-friendly.

#9 CRÈCHE AT MS BUILDING AND KPSC BUILDING, BENGALURU, INDIA (ECD Facility, Accessible)



To make the work environment more suitable for caregivers, Bengaluru Smart City, under Project Rashmi, has equipped six government office buildings with caregiver amenities, including women's lounges and crèches. Two vacant rooms in MS Building and KPSC Building have been transformed into daycare centres. These centres are operational during office hours and offer facilities such as a children's play area, sleeping rooms, study room, pantry, and child-height washbasins, and toilets. These workplace amenities allow employees to bring their children after school and during holidays, enabling them to continue working, thereby improving their livelihood opportunities and overall well-being.

#10 IMPROVING ACCESS TO AN ANGANWADI CENTRE, AGARTALA, INDIA (ECD Facility (anganwadi centre), Accessible)



The anganwadi centre near Pragati School in Agartala, India, was disconnected from the neighbourhood with no clearly defined access. The city created a dedicated access road and revamped the immediate surroundings of the AWC to make it safer and playful for young children and their caregivers. In the 100 sq. m. space, open drains were closed and spillover play space for children were added. This has enhanced the playtime for children and reimagined the AWC as a positive public space.

#11 IMPROVING ACCESS TO LAKEFRONT, COIMBATORE, INDIA (Streets, Mobility, Safe, Accessible)



The lakefront, which people find difficult to reach, is being redeveloped with renewed public spaces. Access to the lakefront is being enhanced through tactical interventions of a continuous, obstruction-free footpath, buffer from traffic, and a bus stop with comfortable waiting spaces. The tactical intervention has improved access along the 300m road stretch connecting to the lakefront for pedestrians and cyclists.

#12 RECLAIMING SPACE FOR ACCESSING ECD SERVICES, ERODE, INDIA (ECD Facility (anganwadi centre, health centre), Accessible)



This site has an anganwadi centre and a maternity hospital in the same compound. Although, it received a high footfall of young children and caregivers, but it lacked play or waiting spaces. The city improved accessibility to the compound by providing safe crossings and converting vacant spaces into playful waiting areas. This has led to more convenience for the young children and their caregivers, potentially benefitting around 100 users every day.

#13 EXPOSURE TO TRADITIONAL HERBS BY REVITALISING ABANDONED PARK, RANCHI, INDIA

(Parks and Open Spaces, Green, Playful)



Once a famous public space, the Zakir Hussain park was abandoned 10 years ago and remained inaccessible to the public. The 3,400 sq. m. area park was refurbished and opened for the public as an herbal garden, with more than 1,000 medicinal plants and spices planted, play opportunities created with recycled materials, and family-friendly amenities. Dedicated walkways and crossings were added to ensure safer access to the garden. This has helped re-establish the connection with traditional nature-based medicines for young children and their families.

#14 YOUNG CHILDREN-FRIENDLY ANGANWADI CENTRE, UDAIPUR, INDIA

(ECD Facility (anganwadi centre), Accessible, Playful, Inclusive)



Located within a government-owned premise, the anganwadi centre in Manoharpura shares space with a primary school. Previously characterised by broken playground equipment, dull classrooms, and lack of engaging age-appropriate play spaces, the facility faced high dropout rates and low enrollment. As part of the Urban95 programme, this project aimed to retrofit the underutilised anganwadi centre into a safe, interactive, and engaging environment for young children and their caregivers, emphasising "learning while playing".

Key interventions included installing age-appropriate play equipment, transforming dull walls, ceiling, and floors with interactive art, and adding child-friendly amenities such as low-height wash basins and shoe storage. Interactive shading elements and colorful abacus railings were also introduced to improve usability and safety, fostering a sense of ownership and belonging among children.

<https://udaipurmc.org/downloads?page=urban95-second-phase>

#15 OPEN STREET FOR PLAY ON SUNDAYS, ROHTAK, INDIA

(Streets, Mobility, Participation, Accessible)



The neighbourhood street in Model Town, Rohtak, was dominated by vehicles and the local community wanted to reimagine the street as a public space. On a Sunday morning, the street was temporarily closed for traffic and transformed into a lively public space promoting walking, cycling and providing numerous play opportunities for young children and caregivers.

Around 2,000 people including 150 young children experienced the temporary public space. The event has brought together the community and enhanced awareness on nonmotorised transport and the usage of public spaces.

#16 MANAV SADHNA, AHMEDABAD, INDIA

(Social Infrastructure, Urban Services, Inclusive)



Manav Sadhna is an Ahmedabad based NGO, dedicated to the upliftment of the underprivileged children. An activity centre built amidst the largest squatter settlement in Ahmedabad serves to be a demonstration for the application of recycled waste as affordable, aesthetically pleasing and efficient building components. The multi-purpose activity centre serves as an informal school, vocational training institute, gymnasium, and health centre as well a community space. A crèche has been added to take care of toddlers. It is intensively used, providing a community hub, and its premises and activities are constantly expanding. It has also created a model for construction using recycled waste. Local people, who earned wages and learned new skills in the process, have manufactured the specific components with hand-operated tools. The result addresses environmental concerns, economic issues and provides affordable housing.

www.manavsadhna.org/

#17 RECLAIMING PEDESTRIAN SPACE ON STREETS, COIMBATORE, INDIA

(Streets, Mobility, Safe)



As part of “Kovai Connect - Celebrating Public Spaces”, Coimbatore City Municipal Corporation implemented a pilot project that focused on tactical interventions in one of the city’s busy roads. The idea behind the intervention was not to merely transform the physical appearance of the streets but to streamline vehicle movement and create enough space for pedestrians and bus users using simple tactical interventions. Public participation was key at both the implementation and monitoring stages of the pilot project to ensure feedback was incorporated from all users. Specifically, feedback related to levels of service for pedestrians and bus users were improved as per traffic surveys.

<https://www.sutp.org/reclaiming-public-space-in-coimbatore/>

#18 PROJECT CHAAK, NEW DELHI, INDIA

(Parks and Open Spaces, Temporal Urban Activities, Inclusive)



Residents in Delhi transformed a dumping ground at Hauz Rani, Malviya Nagar, by clearing 21.5 tons of garbage to create a neighbourhood park for children and women. Components of the park include walking trails, gym equipment, acoustic play equipment and bamboo climbing frames to engage children across all age groups in active and free play. Low-cost materials were upcycled to create play equipment and walking trails. An increase of 250% in the number of people using the park and a 60% increase in the amount of time spent by children at the park were noted.

https://bernardvanleer.org/urban95-challenge/creating-space-for-creative-play-in-delhi/?fbclid=IwAR25Xg7p_L-KXXE_KJEW9cUvhk4rsUxCxgh79tpA-LU73EGsX6yR-bD-PY

#19 MATUNGA FLYOVER, MUMBAI, INDIA (Park and Open Spaces, Mobility, Accessible)



The space under Matunga flyover was designed as a continuous park with adequate lighting, seating, children's play area and green spaces. An NGO named 'One Matunga' took the initiative of transforming this poorly utilised empty space under the flyover for children's community activities on Sunday mornings. Over time, residents of Matunga decided to convert the empty space from misuse and illegal occupation into a green space. For this, safety rails, barricades and plantations at edges were introduced to make the space safe for vulnerable groups including infants, toddlers and children. After its success, the Brihanmumbai Municipal Corporation (BMC) created this space as a permanent green public space.

<https://www.thebetterindia.com/58845/matunga-flyover-garden-mumbai/>

#20 BALSENA AND TARUN SENA PROGRAMMES, BHAVNAGAR, INDIA (Participation, Inclusive)



Shaishav is a NGO that creates change within communities by empowering children to become community change makers. Community education centres are formed to educate children about their rights, responsibilities and to provide basic education. The organisation supported the formation of lok smarthan manch - a forum for community leaders. Further, Shaishav established 'Bal dost manch', meaning, friends of children, to support capacity building work and to become ambassadors of child rights. Under the child safety net program, community volunteers were identified to assess the needs of children living in similar neighborhoods. Various capacity building programs and team-building programs through games and play were conducted to educate children on the importance of teamwork.

<http://shaishavchildrights.org/maltrree/>
<http://shaishavchildrights.org/youth-development/>

#21 PALLE PRAKRUTI VANAM, TELANGANA, INDIA (Parks and Open Spaces, Green)



The State Government of Telangana envisions to enhance the green infrastructure of its rural villages by creating forest-cum-parks or *Palle Prakruti Vanam* across 12,000 Gram Panchayats of Telangana State.

At present, the government has identified half acre to one acre of land close to villages, for the development of forest-parks in 396 of 647 Gram Panchayats. These will function as green breathing spaces and recreation spots for both children and adults alike. Over 4,000 saplings of different varieties including fruit-bearing trees will be planted in these forest-parks.

<https://telanganatoday.com/palle-prakruti-vanam-in-each-village-of-telangana-soon>

#22 LOVE YOUR PARKS, MUMBAI, INDIA (Parks and Open Spaces, Inclusive)



Love Your Parks Mumbai (LYPMumbai) was born out of two mothers' collective desire to advocate for better public spaces for all Mumbaikars through community engagement, programming, and stewardship. LYPMumbai has been advocating for Mumbai's Public Open Spaces through social media and more than 30 free on-ground events in collaboration with local entrepreneurs and like-minded organisations since December 2018. The initiative aims to foster a sense of civic responsibility and belonging amongst local communities by organising activities and programmes such as open concerts by the community choir, music festivals, storytelling sessions, family yoga games, senior citizens programmes and cycling events. LYPMumbai acts as a facilitator between the community and the Mumbai city administration by providing regular feedback on ways to create an active, safe and user-friendly public space.

<https://www.lypmumbai.com/>

#23 RECLAIMING STREET SPACE FROM PRIVATE PARKING AT VIKAS MARG, DELHI, INDIA

(Streets, Mobility, Safe)



Delhi Development Authority undertook a pilot project of reclaiming street space from private parking by applying urban street design guidelines formulated by UTTIPEC, (Planning and Engineering) cell under Delhi Development Authority formulated comprehensive urban street design guidelines with selected best practices around the world and customised to ground conditions and challenges in India, particularly in Delhi. It propagates that streets are valuable public spaces as well as movement corridors. A set of 10 non-negotiable Street Design Components as well as additional guidelines for world class streets have been outlined in this guide.

<https://smartnet.nua.org/sites/default/files/resources/nmtv/sakhapalnamcspifnal.pdf>

#24 BALA (BUILDING AS LEARNING AID), GUJARAT, INDIA

(ECD Facility, Playful)



'BaLA' (Building as Learning Aid) is an innovative concept to provide quality improvement in education, through developing child-friendly, learning and fun based physical environment in schools. By innovatively treating the school space (eg., classroom, circulation spaces, outdoors, natural environment) and their constituent built elements (like floor, wall, ceiling, door, windows, furniture, open ground) a range of learning situations and materials are integrated such that they can actively be used as a learning resource. It will help to make the school a child-friendly place, resource for teaching and learning, an exciting place, allowing learning with fun to create self-learning situations for children.

www.childinspired.wordpress.com/bala-building-as-a-learning-aid/
www.slideshare.net/dvarad09/kabir-valpeyl-building-as-learning-aid-bala

#25 PEDESTRIAN SAFETY PROGRAMME, SAO PAULO, BRAZIL (Streets, Mobility, Participation, Safe)



The main objective of the Pedestrian Safety programme was to reduce road accident rate (i.e., pedestrian deaths) by 50% by the end of 2012. To achieve this goal, multiple state agencies collaborated and shared responsibilities. An overview of the various state agencies include: (a) the Traffic engineering company that provided technical expertise for road engineers and enforcement measures; (b) the Department of Communication that focused on media outreach; (c) the Labour Secretariat that supervised mentors at road crossings; (d) the traffic police that focused on enforcement of safety rules and regulations; (e) the bus management company that supervised and trained the bus drivers; and (f) the City Transportation Secretariat that coordinated the overall implementation of the programme.

https://www.grsproadsafety.org/wp-content/uploads/PedestrianSafety_eng.pdf

#26 SOLANDA HOUSING PROJECT, QUITO, EQUADOR (ECD Facility, Neighbourhood Layout, Accesible)



Planned Social Infrastructure for Solanda consisted of a daycare centre, kindergarten, primary school, recreational facilities, commercial centre, and a community space for every 1,100 families. Larger community facilities included a health clinic, boys high school, cultural centre, sports areas, administrative centre. As of 2005 there were more than 18 daycare centres, kindergartens and primary schools, eight high schools, one adult education centre, two churches, four community centres, four health centres, a police office, a fire station, and a post office. A major commercial street, 'La Jota', organically developed on one of the major arteries dividing the super-blocks, with stores ranging from clothing supply to banking offices and popular fast food chains.

www.manavsadhna.org/

#27 FORTALEZA CARES: PRIORITISING SAFER ACCESS TO ALBERT SABIN CHILDREN'S HOSPITAL, FORTALEZA, BRAZIL

(Streets, Mobility, Participation, Safe, Accessible)



National Association of City Transport Officials (NACTO) collaborated with Albert Sabin Children's Hospital, World Resource Institute (WRI) and Vital Strategies through Bloomberg Philanthropies initiative for Global Road Safety, to equip the city with safe pedestrian infrastructure to reduce the rate of road accidents in the city; and to improve public access to the hospital. The street adjacent to the hospital was car-centric and the sidewalk was in a dilapidated condition. This street was unsafe for children and caregivers to walk and cross, so technical assistance for interventions was provided to develop strategies to improve road safety and accessibility to the hospital. Additionally, designing a public space along the main access road of the hospital was conducted. Another objective of the project was to reconfigure the vehicle dominated roads into pedestrian-friendly streets by converting under-utilised road space into continuous sidewalks with traffic calming measures such as raised crossings, speed bumps and smaller turning radii.

<https://www.thebetterindia.com/58845/matunga-flyover-garden-mumbai/>

#28 DESIGNING SAFER STREETS FOR CHILDREN, SOUTH KOREA

(Streets, Mobility, Accessible, Safe)



With 32% fewer traffic accidents involving children, Seoul, South Korea is one example of how changing street design can improve road safety. Traffic-related fatalities among children fell by 95 percent in the country, from 1,766 in 1988 to 83 in 2012. This success was the direct result of a series of projects that targeted regulations, education and the built environment. One such project was the School Zone Improvement Project, implemented throughout several Korean cities. The project aimed to create safe routes from children's homes to kindergartens, elementary schools and childcare facilities. Officials started by reducing speed limits through infrastructure design tools, such as speed bumps. They established dedicated right-of-ways for pedestrians, and created clear distinctions between sidewalks and roads.

NIUA 2019 'Place matters- Handbook of Global Best Practices on place making for children' Delhi, India.

#29 FUJI MONTESSORI KINDERGARTEN, FUJI, JAPAN (ECD Facility, Playful)



Fuji Montessori Kindergarten (Fuji Yochien) in the Tokyo suburb of Tachikawa is a new Montessori nursery and kindergarten school catering for children from two to six years of age. The nursery-cum-kindergarten is different from usual nurseries because it receives no public funds and it serves children of both working and non-working parents. Being the largest Kindergarten in Japan, Fuji Montessori Kindergarten (Fuji Yochien) is the most talked about and envied kindergarten. Primarily because it has been designed as a child-friendly space, in comparison to schools that are often drab, standardised and grey concrete blocks. Winning multiple architectural design awards, Fuji's school building is well known for its celebrated 'doughnut ring' rooftop which encloses an internal courtyard space.

[NIUA 2019 'Place matters- Handbook of Global Best Practices on place making for children' Delhi, India.](#)

#30 CANTINHO DO CEU COMPLEX URBANISATION, SAU PAULO, BRAZIL (Parks and Open Spaces, Streets, Mobility, Neighbourhood Layout, Inclusive)



The development of the Cantinho do Céu Complex informal settlement was part of São Paulo's Slum Upgrading Programme, which won the UN-Habitat Scroll of Honour prize in 2012. The project turned a 7km stretch along the banks of the Billings Reservoir into accessible public parks and green networks for residents of all ages to enjoy actively and socially. The widest streets of the neighbourhood had their geometric characteristics adjusted, while other new routes were created to provide access to areas previously disconnected to the road system and local roads with narrower dimensions had their use preserved – as places which combine auto and pedestrian circulation. In the park, facilities were designed for play and entertainment as wooden decks, panoramic terraces, large rest areas, that face the water.

[NIUA 2019 'Place matters- Handbook of Global Best Practices on place making for children' Delhi, India.](#)

#31 BICENTENNIAL CHILDREN'S PARK, SANTIAGO, CHILE

(Parks and Open Spaces, Mobility, Green)



Santiago is the capital and largest city in Chile and has no single place to go for long walks. A 10km horizontal, continuous path was transformed into a pedestrian promenade. The project consists of over 1,800 sq. m. of children's playground, including tree houses, swings with harness, a forest of water spheres and a toboggan cascade with more than 60 toboggans arranged on the hillside. These slides take full advantage of the slope in a playful way. The park has been designed to work with the land as it was, creating a unique and whimsical play space in the process. Sitting at the bottom of the park, the playground marks the entrance towards green areas, and is connected to the nearby zoo. The park is geared at small children and toddlers, with a focus on the scale and design of all equipment. Using the difficulties of the terrain, the park is designed in such a way that it ensures the safety of young children and keeps them engaged.

[NIUA 2019 'Place matters- Handbook of Global Best Practices on place making for children' Delhi, India.](#)



Acknowledgements

The first version of the ITCN Capacity Building Documents were developed under the leadership of the Ministry of Housing and Urban Affairs' India Smart Cities Mission, with the vision and guidance of Joint Secretary Kunal Kumar and his team. Teams of experts from the Van Leer Foundation and BDP, as well as other institutions and affiliations authored the documents. Simon Battisti served as project co-lead, with the expert support from Prakash Paul and Hannah Wright. The outside expert review panel for this document was Jens Aerts, BUUR-Bureau for Urbanism; Ankita Chachra, NACTO; Tim Gill, Rethinking Childhood; Amanda O'Rourke, 880 Cities; Sophie Schuff, Gehl Architects; Hitesh Vaidya and UN-Habitat India. City representatives from Bhubaneswar, Pune, and Udaipur, as well as a range of technical partners contributed knowledge and feedback in workshop format.

Rushda Majeed, Van Leer Foundation, led the overall effort, with the strategic guidance and expertise of the Van Leer Foundation's Management and Knowledge for Policy team in The Hague.

The ITCN Capacity Building Documents 2.0 have been updated based on the on-ground learnings and reflections from the Nurturing Neighbourhoods Challenge (NNC). The documents capture the learnings from various projects implemented and processes adapted by the 10 winning cities as part of the Challenge: Bengaluru, Hubballi Dharwad, Indore, Jabalpur, Kakinada, Kochi, Kohima, Rourkela, Vadodara and Warangal. The team from WRI India associated with the Nurturing Neighbourhoods Challenge have been involved in the making of the documents with the support of Van Leer Foundation and expert reviewers.

Van Leer Foundation Team:

- Rushda Majeed
- Andrea Torres
- Prakash Kumar Paul
- Victoria Chavez Barriga
- Patricia Núñez Zamora
- Darja Dobermann
- Sam Sternin
- Laura Ochoa Foschini
- Ankita Chachra

Centre for Communication and Change-India Team:

- Sanjeeta Agnihotri
- Ankita Kumari
- Sonali Jana

Johns Hopkins Bloomberg School of Public Health Team:

- Uttara Bharath Kumar

WRI India Team:

- Amy R. Joseph
- Anushree Patil
- Arunima Saha
- Arunima Sen
- Chaitali Patil
- Jashwanth Tej
- Kaustubh Chuke
- K Gokul Kalaimathi
- Kshitija Pendharkar
- Madhura Kulkarni
- Manoj Sakthivell
- Nandini Chandrasekaran
- Nikita Pal
- Nivedita Patel
- Ravichandra Gollavilli
- Sreekumar Kumaraswamy
- Sruthi Atmakur-Javdekar
- Sudipto Barua
- Suhani Gupta
- Swarna Dutt
- Swathi Krishna PS
- Visakha KA

